



MIDDLE FLOOR APARTMENT 1 BEDROOM 1 BATHROOM IN BENALMADENA

📍 Benalmadena

REF# BEMR4793242 €290,000

BEDS

1

BATHS

1

BUILT

59 m²

TERRACE

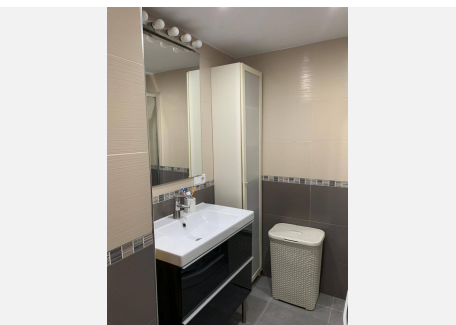
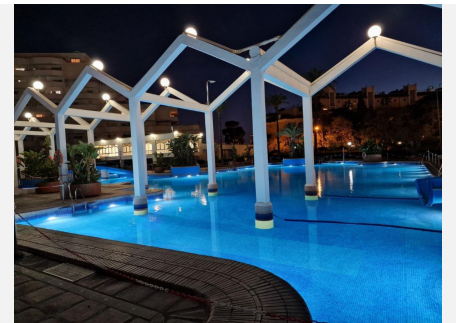
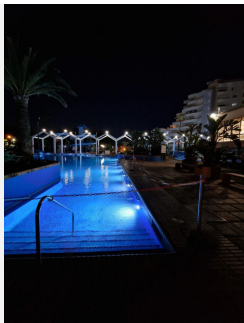
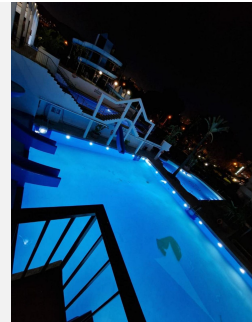
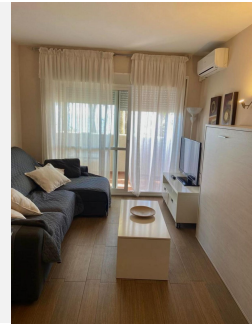
6 m²

This magnificent studio apartment offers a luxurious and convenient stay, fully equipped to accommodate up to four people. Located on the first floor, the apartment boasts air conditioning, WiFi, and a terrace with breathtaking frontal views of the sea. The complex provides a wealth of amenities, including five swimming pools, a restaurant, expansive gardens, a gym, a supermarket, a reception area, and security services.

Situated next to the sea, this property is ideally positioned near Parque de la Paloma and Selwo Marina, with the Port Deportivo de Benalmádena just a 5-minute walk away. The beach is only 100 meters from the apartment, making it an ideal location for beach lovers. The apartment is furnished and has communal parking available, ensuring a comfortable and stress-free stay.

BROMLEY ESTATES

Marbella



BROMLEY ESTATES

Marbella

