

BROMLEY ESTATES

Marbella



MIDDLE FLOOR APARTMENT 2 BEDROOMS 2 BATHROOMS IN NUEVA ANDALUCIA

📍 Nueva Andalucia

REF# BEMR4797883 €350,000

BEDS

2

BATHS

2

BUILT

87 m²

TERRACE

8 m²

Very well kept Apartment in the popular urbanisation of LOCRIMAR, located between Puerto Banus & San Pedro.

This first floor apartment (with lift) consists of 2 bedrooms of which one is en-suite, one guest bathroom, kitchen (with brand new Hob & oven), living & dining room leading out to a south facing terrace.

Included in the price is 1 underground car park and a storage room.

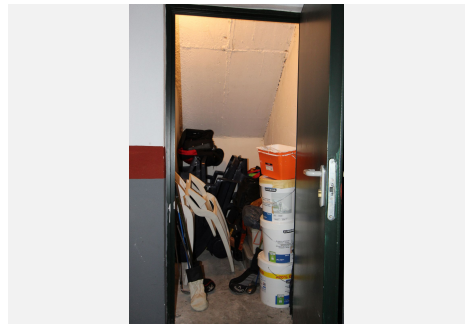
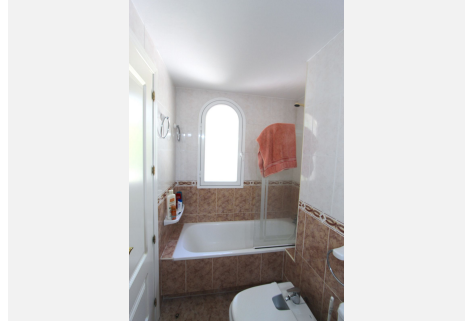
The gated Urbanisation has beautiful maintained Gardens, a Pool & a kids Pool (with life guard in the summer months), 2 Padel courses & 24 hours security.

750 metres to the beach, across the road is a tennis club, it's also located 450 metres from the famous 'Real Club Padel Marbella' (with Gym & restaurant)

Malaga Airport is 40 minutes away, Marbella centre is less than 10 minutes drive away.

BROMLEY ESTATES

Marbella



BROMLEY ESTATES

Marbella

