



PENTHOUSE 2 BEDROOMS 2 BATHROOMS IN BENALMADENA

📍 Benalmadena

REF# BEMR4799050 €489,000

BEDS

2

BATHS

2

BUILT

118 m²

TERRACE

29 m²

Stunning sea views.

The property is located in the area of Montealto in Benalmadena, an ideal area for those looking for an area with a lot of tranquility, but close to all the necessary services. The apartment is built in 2013, it has beautiful gardens, almost a jungle vibe, and a fantastic pool area.

In the urbanisation you will also find 2 paddle courts and a gym.

When entering the duplex apartment you will find a big living room connected to the kitchen with access to the terrace. A bedroom and a bathroom is also at the entrance level.

On the first floor we have a bedroom with an ensuite bathroom and a terrace.

It comes with one parking spot and a storage room

BROMLEY ESTATES

Marbella



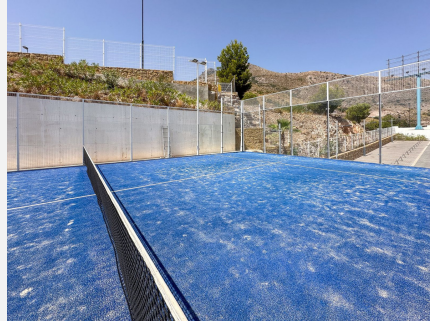
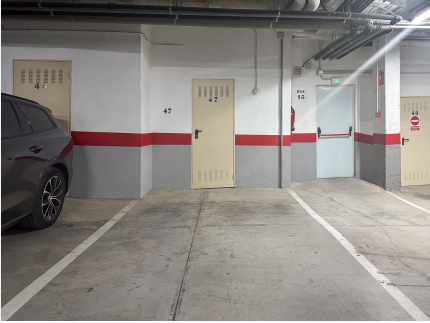
BROMLEY ESTATES

Marbella

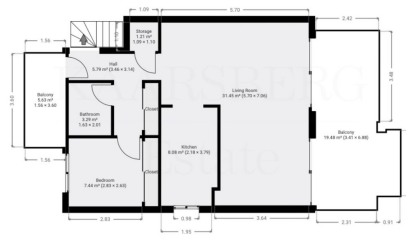


BROMLEY ESTATES

Marbella



0/1 TO SCALE
ground floor



0/1 TO SCALE
4 floor

