

BROMLEY ESTATES

Marbella



HOUSE 5 BEDROOMS 5.5 BATHROOMS IN BENAHAVIS

📍 Benahavis

REF# BEMR4801219 €4,250,000

BEDS

5

BATHS

5.5

BUILT

546 m²

PLOT

1413 m²

TERRACE

105 m²

This captivating contemporary villa, located in a prestigious gated community in Atalaya, offers stunning open views of the golf course. Spanning three levels, the villa welcomes you with a grand entrance hall and an open-plan layout featuring a fully fitted kitchen equipped with Miele appliances, a dining area, and a spacious living room. Floor-to-ceiling terrace doors provide access to a large covered terrace that overlooks the lush garden and pool. Behind the living area, a hallway leads to a bedroom with an en-suite bathroom, currently used as an office, as well as a guest toilet.

On the first floor, there are three generously sized en-suite bedrooms. The master suite stands out with its expansive walk-in dressing room, luxurious bathroom, and access to a 30m² terrace, offering breathtaking views.

The lower level is designed for both comfort and entertainment. It includes the fifth en-suite bedroom with a walk-in closet, a large entertainment room, a gym, a sauna, a guest toilet, a laundry room, and several storage and machinery rooms. A charming Spanish patio brightens this level with natural daylight, creating a

+34 952 939 460 · info@bromleyestatesmarbella.com Urbanizacion El Rosario, CN340, Km 188, Marbella, Malaga 29603

BROMLEY ESTATES

Marbella.

warm and inviting atmosphere throughout.

This villa seamlessly blends modern luxury with functional living, all set within a tranquil and scenic environment

Outside, you'll find a fully equipped outdoor kitchen featuring a unique charcoal grill, perfect for alfresco dining. A covered dining and lounge area provides the ideal space for relaxing or entertaining, while an additional covered terrace by the infinity pool offers even more room to unwind. Alongside the pool, sun loungers beckon you to sit back, relax, and enjoy the serene surroundings.

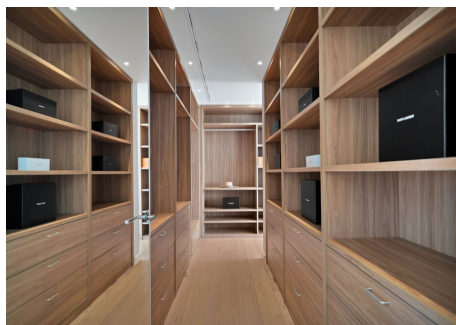
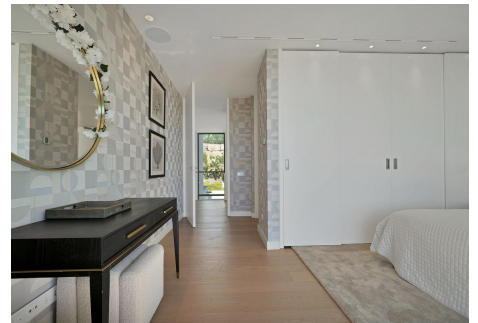
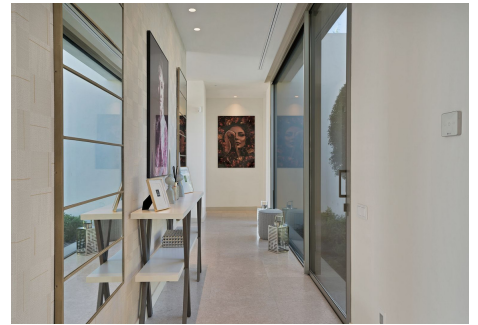
A wide electric gate opens to reveal this stunning villa, with a spacious driveway leading to the entrance. The property includes covered parking for up to three cars, with ample additional space for guests to park within the grounds.

The villa is just a 2-minute drive from a supermarket and 7 minutes from Puerto Banús, with schools, additional amenities, and the beach all within a short drive.



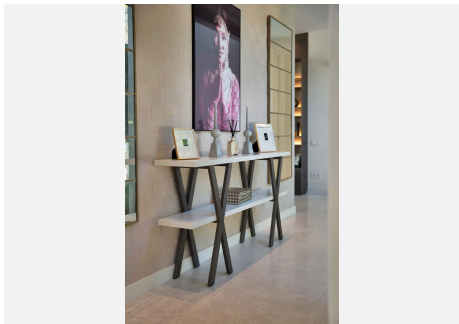
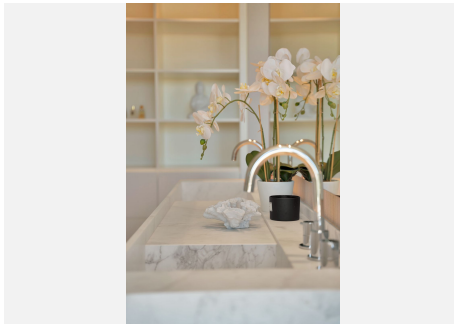
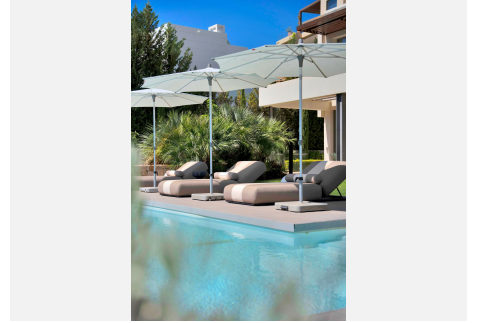
BROMLEY ESTATES

Marbella.



BROMLEY ESTATES

Marbella



BROMLEY ESTATES

Marbella

