

# BROMLEY ESTATES

*Marbella*



## SEMI-DETACHED HOUSE 3 BEDROOMS 3 BATHROOMS IN MIJAS

📍 Mijas

REF# BEMR4802899 €1,060,000

BEDS

3

BATHS

3

BUILT

160 m<sup>2</sup>

PLOT

54 m<sup>2</sup>

TERRACE

97 m<sup>2</sup>

Welcome to your new home!

Privileged Location

Discover this beautiful corner townhouse, located in the exclusive townhouse projects by Higueron. This charming home not only offers a modern and welcoming design, but also benefits from a southwest orientation that guarantees natural light all day long and spectacular sunsets.

Featured Features

- 3 Spacious Bedrooms: Perfect for families or those looking for additional guest space or a home office.
- Ocean Views: Enjoy breath-taking ocean views from your own terrace. Imagine relaxing with a glass of wine while gazing at the horizon .

+34 952 939 460 · [info@bromleyestatesmarbella.com](mailto:info@bromleyestatesmarbella.com) Urbanizacion El Rosario, CN340, Km 188, Marbella, Malaga 29603

# BROMLEY ESTATES

*Marbella.*

- Southwest Orientation: The southwest orientation not only maximizes natural light, but also allows you to enjoy warm sunny days and cool nights under the stars in your private jacuzzi
- Modern and Sustainable Design: The complex focuses on sustainability, with high quality finishes and a design that integrates seamlessly with the natural surroundings.
- Common Areas and Amenities: Access to luxury facilities, such as swimming pools, gardens and recreational areas, ideal for enjoying with family or friends.

## A Unique Lifestyle

Living in Higueron means enjoying a balanced lifestyle, surrounded by nature and with all the amenities at your fingertips. From outdoor activities to nearby dining options, you'll find everything you need for a fulfilling life.

Don't miss out!

This townhouse is a unique opportunity for those looking for a home that combines beauty, comfort and a special connection with nature. Come visit it and fall in love with your new home!

Supermarket and Gas station: 900m

Bus stop: 190 m

Access to AP-7 highway: 1.3 km

Beach: 4.3 km

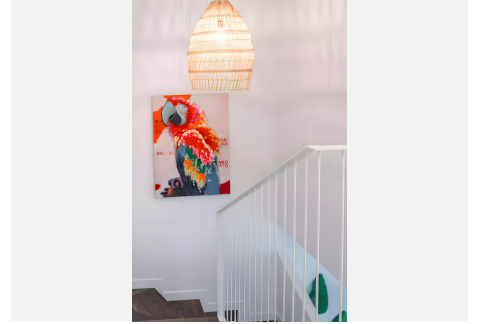
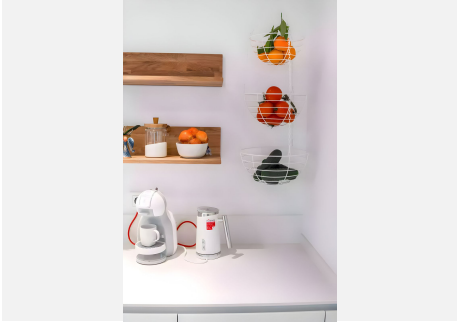
Benalmadena Town: 4 km

Malaga Airport: 20.7 km



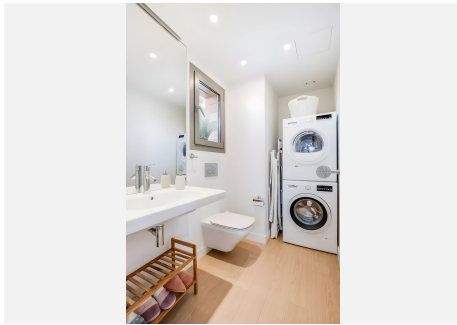
# BROMLEY ESTATES

*Marbella.*



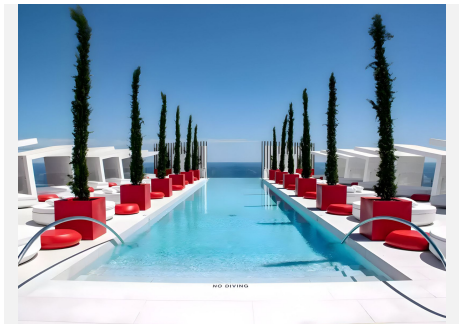
# BROMLEY ESTATES

*Marbella*



# BROMLEY ESTATES

*Marbella*



# BROMLEY ESTATES

*Marbella*

