

BROMLEY ESTATES

Marbella.



HOUSE 5 BEDROOMS 5.5 BATHROOMS IN SOTOGRANDE

📍 Sotogrande

REF# BEMR4809055 €2,250,000

BEDS

5

BATHS

5.5

BUILT

744 m²

PLOT

2571 m²

Sotogrande White House Villa

A luxurious Mediterranean villa set on the rolling hills of Sotogrande situated in the area of SO/Sotogrande Hotel and the Almenara golf course with beautiful mountain views. Entrance is via a courtyard that leads into an open plan entrance hall, 12 seater dining area | lounge | separate TV lounge which leads out onto a large covered terrace and spacious garden through glass fold away doors.

Relax on the sun loungers next to the huge swimming pool or on the comfortable sofa on the covered terrace. Enjoy lunch on the BBQ and dine outside at the 12 seater dining table on the covered terrace.

The kitchen is fully furnished and equipped with all the necessary amenities. An 8 seater dining area is in the kitchen if you prefer a more informal eating space. A laundry area leads out the kitchen which connects to the garage for easy access from your car into the kitchen.

Above the garage is an independent guest cottage with bedroom | en suite bathroom and living room.

The main house has 3 large en suite bedrooms on the ground floor. The spacious luxurious master

+34 952 939 460 · info@bromleyestatesmarbella.com Urbanizacion El Rosario, CN340, Km 188, Marbella, Malaga 29603

BROMLEY ESTATES

Marbella.

bedroom with en suite large bathroom is on the 1st floor. The master bedroom opens out through glass fold away doors onto a private balcony with beautiful views of the mountain and surrounding area. Climb up the spiral staircase to the 2nd floor which opens out on to another private balcony with beautiful views of the mountains.

Indoor space

- ? Fully equipped kitchen with household appliances
- ? Linen & towels
- ? High-speed uncapped internet access (WI-FI)
- ? Air Conditioners – Cool & Heat
- ? Radiators
- ? Fans
- ? Heated Towel Rails
- ? Fire Place
- ? Washing machine
- ? Tumble-dryer
- ? Dishwasher
- ? Glass stove top – Electric Cooker & Electric Oven
- ? Microwave
- ? Fridge & freezer
- ? Nespresso Coffee Machine
- ? Kettle
- ? Toaster
- ? Cutlery & Crockery
- ? Glasses
- ? Hair dryers
- ? Clothes hangers
- ? TV's
- ? Marshall Speaker
- ? Digital Personal Room Safes

Outdoor Space

- ? Swimming pool
- ? Undercover terrace
- ? Large garden
- ? Outdoor Furniture & pool loungers
- ? Umbrellas
- ? Swimming pool & beach towels
- ? BBQ (Gas)

Parking

- ? 2 Garage Parking & 2 driveway parking

Security

- ? Security alarm system connected to 24-hour armed response

BROMLEY ESTATES

Marbella

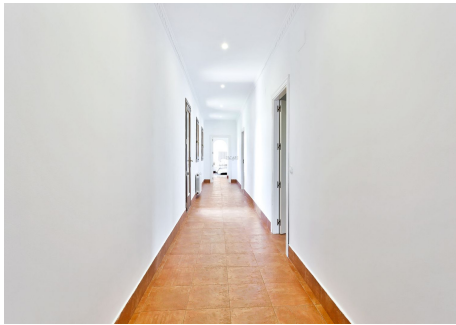
? Electric Gate

Plot size 2571m2 – Build size – 744m2



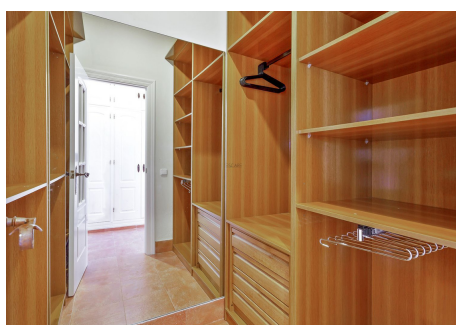
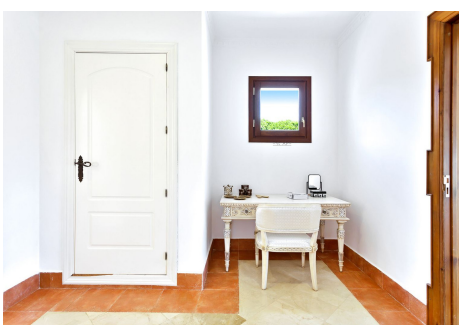
BROMLEY ESTATES

Marbella



BROMLEY ESTATES

Marbella



BROMLEY ESTATES

Marbella

