



## MIDDLE FLOOR APARTMENT 2 BEDROOMS 2 BATHROOMS IN MANILVA

📍 Manilva

REF# BEMR4827349 €299,900

BEDS

2

BATHS

2

BUILT

85 m<sup>2</sup>

TERRACE

15 m<sup>2</sup>

This middle floor apartment, located in the urbanization Coto Real, between Sabinillas and Manilva, offers 85 m<sup>2</sup> built with a large terrace of 15 m<sup>2</sup>, from which you can enjoy spectacular panoramic views of the Mediterranean Sea.

The property has two spacious bedrooms, one of them with en-suite bathroom and direct access to the terrace, ideal for relaxing while contemplating the views. The apartment has a large living room, fully equipped kitchen with laundry room and a very bright terrace that gives the feeling of being in a penthouse.

The urbanization, which has 24 hour security and vehicle control with barrier, offers beautiful gardens and several communal swimming pools.

Included in the price is a large parking space in the basement of the community and a large storage room.

# BROMLEY ESTATES

*Marbella*

Sabinillas is a growing coastal area that combines the tranquility of a fishing village with the convenience of having all services at hand. It has a wide variety of restaurants, stores, and beaches with beach bars, offering a perfect environment both for those looking for a permanent residence and for those who wish to enjoy vacations near the sea. Its promenade is ideal for relaxing strolls and its family atmosphere makes it an excellent choice for living.

Manilva, on the other hand, is an area of great charm, famous for its vineyards and natural surroundings. It offers a quieter lifestyle, ideal for those who wish to escape the hustle and bustle of the big cities without sacrificing proximity to services. With its mountain scenery and sea views, Manilva offers a perfect environment to enjoy the Costa del Sol in its most authentic and traditional version.

Middle Floor Apartment, Manilva, Costa del Sol.  
2 Bedrooms, 2 Bathrooms, Built 85 m<sup>2</sup>, Terrace 15 m<sup>2</sup>.

Setting : Town, Country, Village, Close To Shops, Close To Schools, Close To Forest, Urbanisation.

Orientation : South.

Condition : Excellent.

Pool : Communal.

Climate Control : Air Conditioning.

Views : Sea, Panoramic.

Features : Covered Terrace, Lift, Fitted Wardrobes, Near Transport, Private Terrace, WiFi, Storage Room, Ensuite Bathroom, Access for people with reduced mobility, Marble Flooring, Double Glazing.

Furniture : Optional.

Kitchen : Fully Fitted.

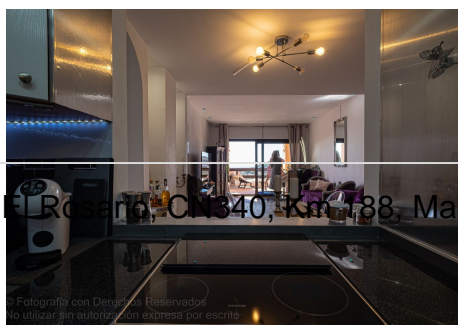
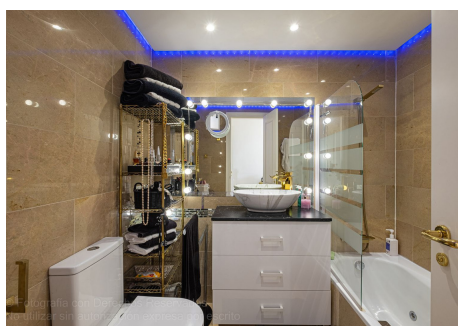
Garden : Communal, Easy Maintenance.

Security : Gated Complex, Entry Phone.

Parking : Underground, Garage, Covered, Private.

Utilities : Electricity, Drinkable Water.

Category : Golf, Holiday Homes, Investment, Luxury, Resale, Contemporary.



+34 952 66 94 60 | info@bromleyestatesmarbella.com | Urbanizacion El Rocío, C/640, Km 1,88, Marbella, Malaga 29603

Fotografía con Derechos Reservados. No utilizar sin autorización expresa por escrito.

Fotografía con Derechos Reservados. No utilizar sin autorización expresa por escrito.

Fotografía con Derechos Reservados. No utilizar sin autorización expresa por escrito.

# BROMLEY ESTATES

*Marbella*

