



HOUSE 6 BEDROOMS 4 BATHROOMS IN BENAHAVIS

📍 Benahavis

REF# BEMR4830691 €1,200,000

BEDS

6

BATHS

4

BUILT

322 m²

PLOT

1137 m²

TERRACE

30 m²

Amazing villa in the heart of Benahavis

Keyword flipping – perfect

Keyword Big Family creates his own luxury Villa – perfect

Keyword location – dream

This detached villa from 1972 offers a unique opportunity in Benahavis, a charming mountain village just 10 minutes by car from the coast, surrounded by picturesque mountains. The villa combines traditional Spanish style with great development potential on a spacious plot of 1,137 m² and offers over 300 m² of living space – ideal for investors or families who want to create a luxurious home.

Main features:

Fantastic location: The villa is located in the heart of Benahavis, just a few minutes' walk from the town center with his excellent restaurants and shops. Benahavis is considered the culinary stronghold of the

+34 952 939 460 · info@bromleyestatesmarbella.com Urbanizacion El Rosario, CN340, Km 188, Marbella, Malaga 29603

BROMLEY ESTATES

Marbella

region and is strategically located between Marbella and Estepona. Enjoy the quiet mountain landscape while the beach is your neighbour.

Spacious plot: The spacious plot of 1,137 m² offers sufficient privacy and invites you to relax. The well-kept terrace and the beautiful swimming pool make the property a true oasis. Ideal for long summer days or cozy evenings outdoors.

Spacious living space: With 300 m² of living space, this villa offers enough space for the whole family or for flexible use. The open living and dining area creates an inviting atmosphere and provides plenty of light and space. The total of 6 rooms, including several bedrooms with access to terraces and balconies, offer a variety of design options.

Two kitchens and four bathrooms: Ideal for families or use as a multi-generational house. Four bathrooms, two of which are en-suite, offer comfort and privacy for all residents and guests.

High flexibility: This property has enormous potential. Both investors and creative people who are skilled in crafts can create a real gem here. There are no limits to the redesign options. The spacious room layout and the floor plan of the house make all variants of change a real pleasure.

Perfect orientation and view: The orientation of the villa allows you to enjoy the Mediterranean sunlight all day long. From the terrace and balcony you can enjoy a wonderful view of the surrounding mountains – ideal for relaxing mornings or sunsets.

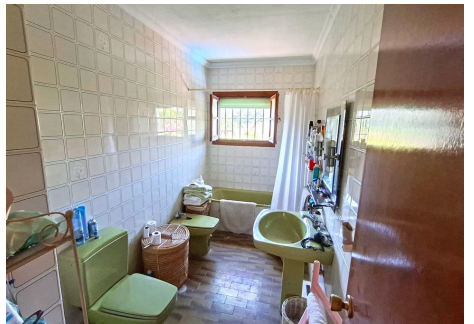
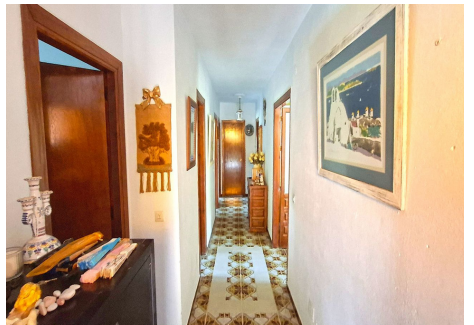
This villa can of course also be moved into immediately.

Arrange a viewing today and let yourself be inspired by this villa!



BROMLEY ESTATES

Marbella



BROMLEY ESTATES

Marbella

