



## GROUND FLOOR APARTMENT 2 BEDROOMS 2 BATHROOMS IN ALOHA

 Aloha

REF# BEMR4832218 €375,000

BEDS

2

BATHS

2

BUILT

80 m<sup>2</sup>

TERRACE

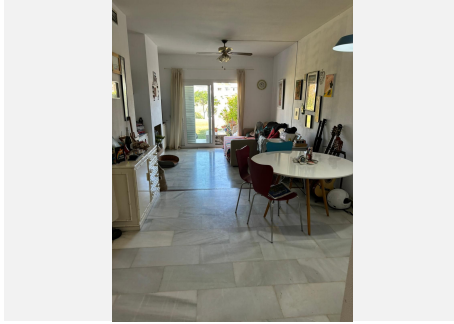
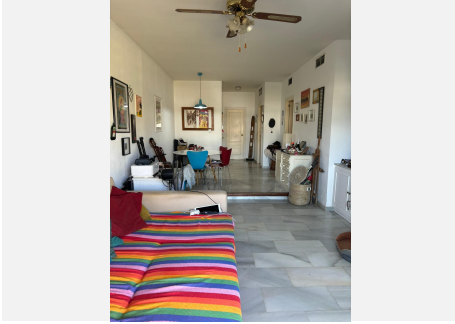
15 m<sup>2</sup>

A rare opportunity to acquire a garden apartment located within one of Marbella's most exclusive gated communities. This private and secure residential community is located front line to the Aloha Golf course, and situated under two minutes walk to a selection of bars and fabulous restaurants in Aloha, and an 8 minute drive to Puerto Banus and the beach. The apartment briefly comprises; fitted kitchen and laundry room, two double bedrooms, two bathrooms, a good sized lounge and dining area which leads directly onto a fabulous terrace, flowing directly into the breathtaking community gardens, where you will find a well maintained Tennis Court and Paddle Tennis court, gymnasium, squash court, community lounge complete with free WiFi, and extensive gardens leading to a beautiful swimming pool, with breathtaking open views over the surrounding golf course and mountains. The apartment is also offered with an external and internal covered car parking space. Whilst this apartment is ready to move into now, the value could be dramatically increased if the apartment was renovated throughout, but is located in a fabulous location which is walking distance to absolutely everything you need on a day to day basis!



# BROMLEY ESTATES

*Marbella*





# BROMLEY ESTATES

*Marbella*

