



## MIDDLE FLOOR APARTMENT 2 BEDROOMS 1 BATHROOM IN BENALMADENA COSTA

📍 Benalmadena Costa

REF# BEMR4836157 €252,000

BEDS

2

BATHS

1

BUILT

45 m<sup>2</sup>

TERRACE

7 m<sup>2</sup>

Magnificent apartment near the Parque de la Paloma and the beach in Benalmádena.

Completely renovated with a contemporary design and high quality furniture.

Fantastic home that has the tourist license !!!!!

It has two bedrooms with built-in wardrobes and a full bathroom.

Very bright living-dining room with its terrace where you can enjoy good times.

Fully equipped open-plan kitchen.

It is located just 280 meters from the beach and next to the emblematic Parque de la Paloma, in one of the most coveted and lively areas of the Costa del Sol.

It is an urbanization where there are three swimming pools and gardens.

If you are looking for a permanent home or a vacation getaway, this modern apartment offers a privileged location and luxurious amenities.

Surrounded by all kinds of services: bars, restaurants, shops, supermarkets, pharmacies...

# BROMLEY ESTATES

*Marbella*

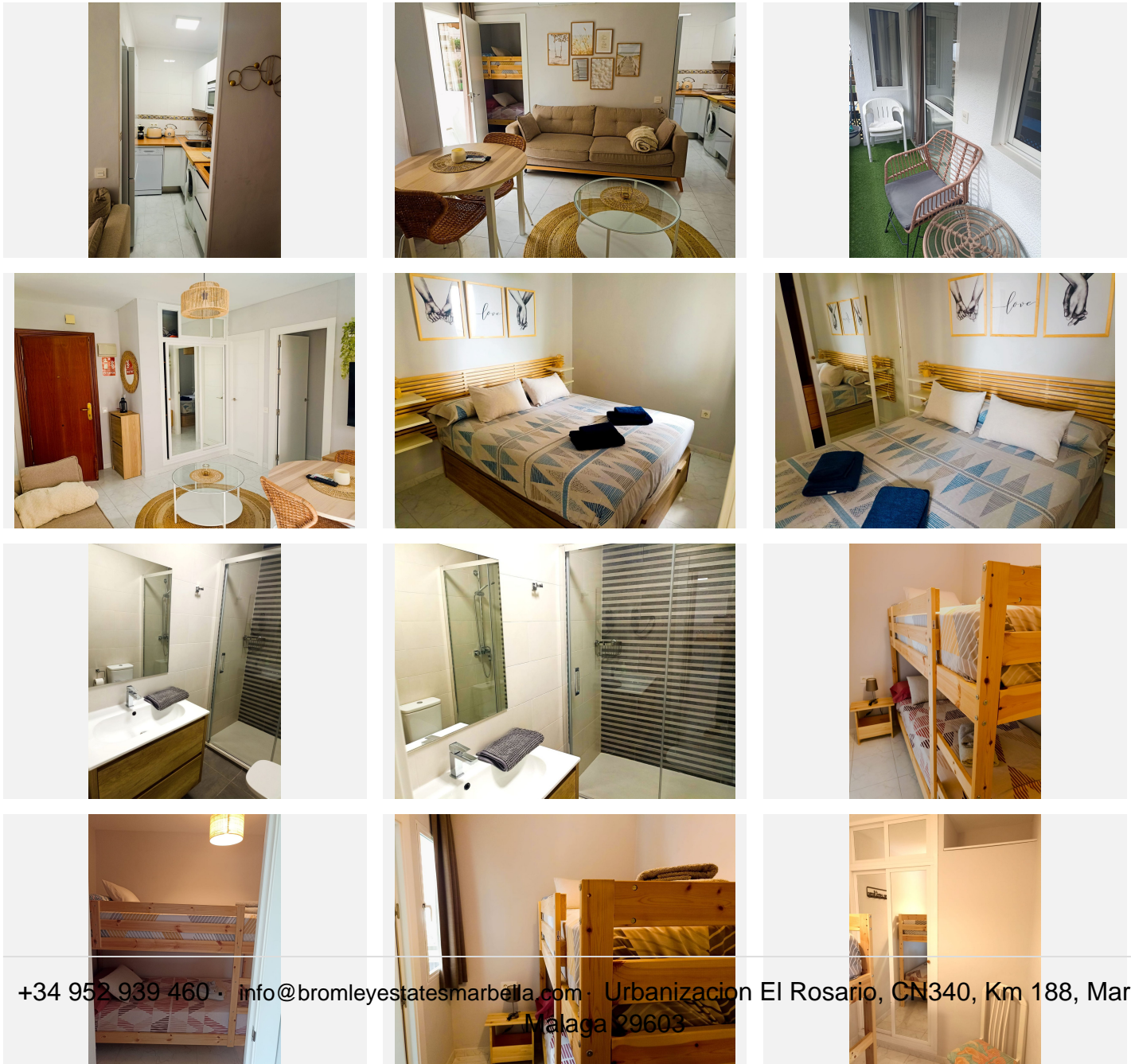
– 280 meters from the beach and next to the Parque de la Paloma and 1.4 km from the Arroyo de la Miel train.

Very interesting for investors as it has a high rental yield or for those who want to live with all the services.

In compliance with the Decree of the Junta de Andalucía 218/2005 of October 11, it is reported that the indicated price does not include the expenses inherent to the purchase of real estate according to current laws (ITP or VAT, notary expenses, registry expenses,)

The exposed data is merely informative and has no contractual value. The offer is subject to errors, price changes, omissions, availability and/or withdrawal from the market without prior notice.

We are at your disposal if you want to make a visit without obligation.



# BROMLEY ESTATES

*Marbella*

---

