



PENTHOUSE 2 BEDROOMS 2 BATHROOMS IN MANILVA

📍 Manilva

REF# BEMR4836481 €440,000

BEDS

2

BATHS

2

BUILT

135 m²

TERRACE

15 m²

Corner penthouse with stunning views of the Mediterranean Sea with an impressive panoramic view of Puerto de la Duquesa, Estepona, African coast.. .) and the mountain. New construction of two large bedrooms with 2 bathrooms and fitted wardrobes, large living room with views of the Mediterranean coast and (new construction) renovated and equipped with design, large kitchen equipped with latest generation appliances (Induction ceramic hob by panels, Teppanyaky on countertop, Industrial extraction hood, large capacity refrigerator, wine cellar.. .) Exclusive extra large Portobello granite countertop, installation of designer lights embedded in the plasterboard, floors and skirting boards with touch controls by zones, temperature sensor and light brightness, extra-large Velux windows with motorized blinds and opaque and luminosity blinds controlled by remote control, Central air conditioning, complete bathrooms with extra-large screens, completely new designer furnished (sofas, furniture, latest generation televisions, appliances). Extra large garage space with storage room, gym, swimming pool with garden, social club, no neighbors on the landing of the door. A unique property for its impressive views in front of the sea and on top of a hill with vegetation, spacious and quiet. Ready to move in and enjoy.

BROMLEY ESTATES

Marbella

Penthouse, Manilva, Costa del Sol.

2 Bedrooms, 2 Bathrooms, Built 135 m², Terrace 15 m².

Setting : Urbanisation.

Orientation : South.

Condition : Excellent.

Pool : Communal.

Climate Control : Air Conditioning, Cold A/C.

Views : Sea.

Features : Covered Terrace, Lift, Fitted Wardrobes, Private Terrace, WiFi, Gym, Storage Room, Utility Room, Ensuite Bathroom, Access for people with reduced mobility, Marble Flooring, Double Glazing, Fiber Optic.

Furniture : Fully Furnished.

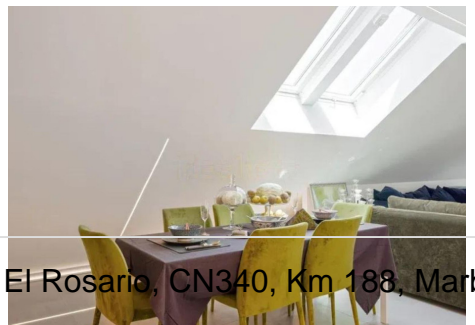
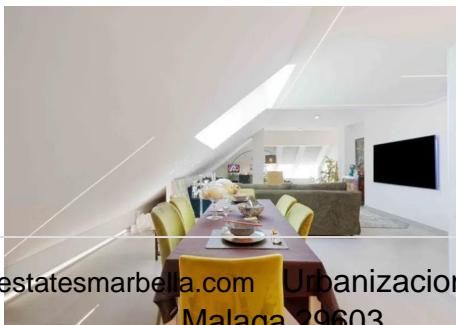
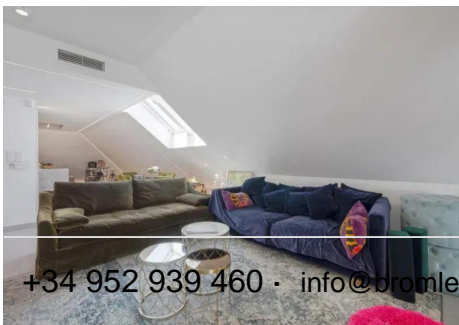
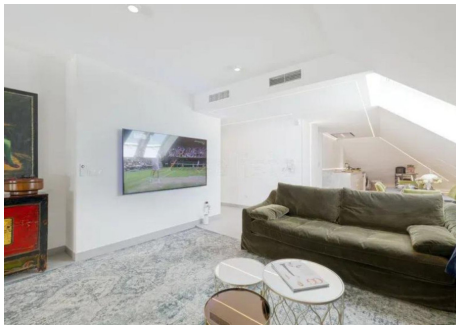
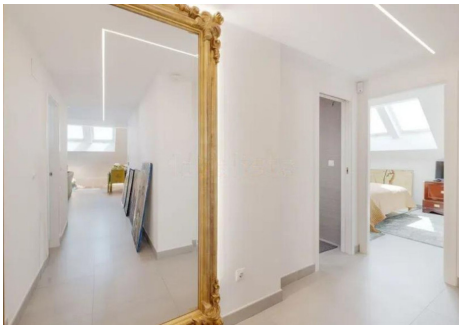
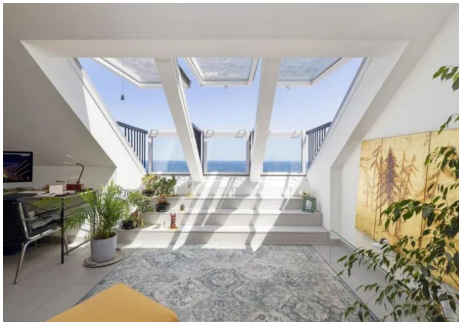
Kitchen : Fully Fitted.

Garden : Communal.

Security : Gated Complex.

Parking : Underground, Garage.

Category : Resale.



BROMLEY ESTATES

Marbella

