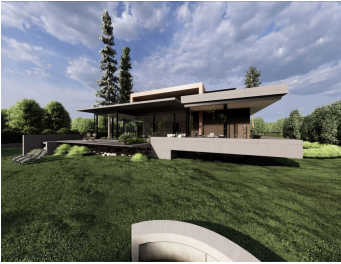


BROMLEY ESTATES

Marbella



RESIDENTIAL PLOT BEDROOMS BATHROOMS IN MANILVA

📍 Manilva

REF# BEMR4838461 €362,250

BEDS

BATHS

BUILT

PLOT

450 m²

1100 m²

Plot with incredible uninterrupted sea views. We are currently developing a Turnkey Project on this plot that will consist out of 3 floors with 4 bedrooms, 4 bathrooms, 1 guest toilet, elevator, living area with open plan kitchen, storage rooms, gymnasium, garage, technical room and much more. Pictures of kitchen and bathrooms are examples of how it could be, even the pictures of the villa can still be changed according the specifications of the clients.

Brochure available for agents who have clients for an off-plan project with all cost included like project, licenses, plot, full construction, first occupation licenses and so on.....

Construction 450 m² on 3 floors, 100 m² covered terraces, 100 m² terraces, 40 m² heated pool, fully fitted kitchen with white goods, voltaic panels and 1 10kW battery, ceiling high windows and so on.

Turnkey price 1.695.000 € VAT not included

BROMLEY ESTATES

Marbella

