



PENTHOUSE DUPLEX 4 BEDROOMS 3 BATHROOMS IN BENALMADENA PUEBLO

📍 Benalmadena Pueblo

REF# R4838542 €1,289,000

BEDS

4

BATHS

3

BUILT

215 m²

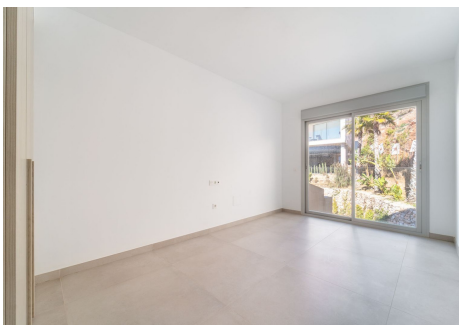
TERRACE

85 m²

Brand new south facing penthouse duplex, located in the exclusive urbanization of Stupa Hills. The property consists of hall, 3 bedrooms with built-in wardrobes and electric blinds, bathroom and guest toilet, open plan kitchen fully furnished and equipped with electrical appliances from Siemens. Spacious living-dining room that leads out to a terrace of 65m² with panoramic sea views, the Fuengirola Bay and of the Buddhist Temple. On the top floor is located the main bedroom with walk-in closet, ensuite bathroom and laundry area. The bedroom leads out to a terrace of 21m² with panoramic sea views. Air conditioning hot and cold with Airzone, video intercom, domotic system, pre-installation alarm system. Includes two parking spaces and one storage room.

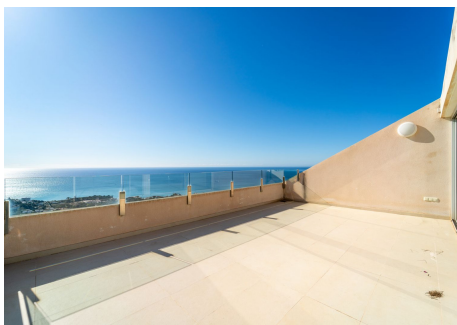
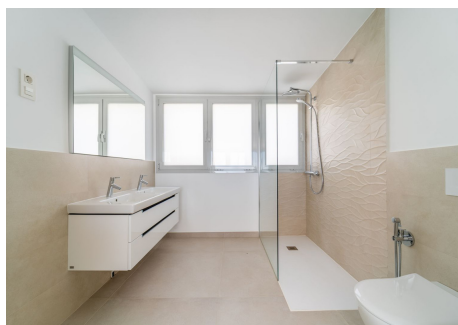
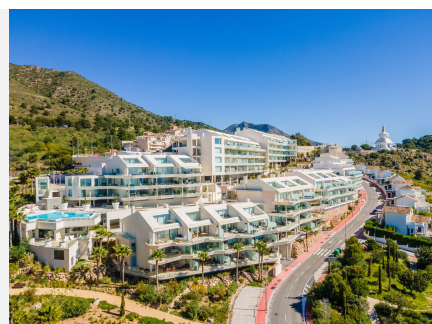
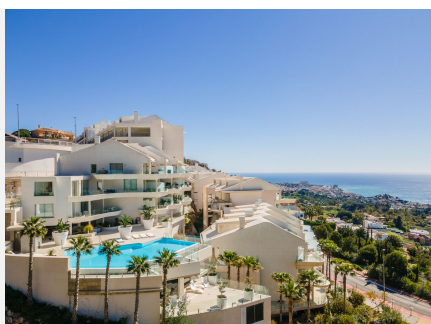
BROMLEY ESTATES

Marbella



BROMLEY ESTATES

Marbella



BROMLEY ESTATES

Marbella

