

## PENTHOUSE DUPLEX 2 BEDROOMS 2 BATHROOMS IN SAN PEDRO DE ALCANTARA

📍 San Pedro de Alcantara

REF# BEMR4838695 €690,000

BEDS

2

BATHS

2

BUILT

120 m²

TERRACE

92 m²

We proudly present this Exclusive Unique Penthouse-Duplex in San Pedro Alcántara, Marbella!!!!!!

Are you looking for a home where elegance, functionality, relaxation, and comfort reign in one place?

Immerse yourself in the splendor of this elegant apartment, with 212 square meters of built space and 185 square meters of usable space, featuring a cozy covered terrace on the ground floor and a spectacular solarium on the upper floor, located in a modern building of recent construction in the coveted area of San Pedro Alcántara, Marbella. With all the conveniences of city living, but located in the new expansion and growth area!!!!!!

This exclusive apartment originally had two bedrooms, but its owner transformed one of them to expand the living room, creating a spacious and cozy dining area that harmoniously flows with the rest of the home. It can be converted back into a second bedroom at any time.

+34 952 939 460 · [info@bromleyestatesmarbella.com](mailto:info@bromleyestatesmarbella.com) Urbanizacion El Rosario, CN340, Km 188, Marbella, Malaga 29603

# BROMLEY ESTATES

*Marbella*

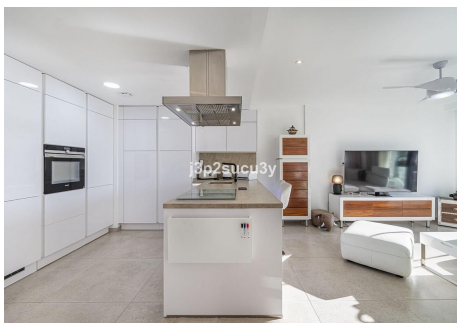
The main floor offers a contemporary design that combines functionality and style, highlighting an open and fully equipped kitchen, practical and beautifully designed in a modern and up-to-date style that blends with the bright living-dining room, forming an ideal space to enjoy with family or friends.

The master bedroom, with an en-suite bathroom, ensures a corner of comfort and privacy. You'll also find a guest toilet and a spacious terrace decorated with exquisite taste, facing south and offering panoramic views that make every sunrise and sunset a unique experience.

The upper floor is an outdoor retreat, with an impressive terrace that invites relaxation and entertainment. Unwind in the jacuzzi, enjoy an al fresco meal under the pergola, or prepare a barbecue surrounded by your loved ones. All of this with the backdrop of open views and a peaceful environment.

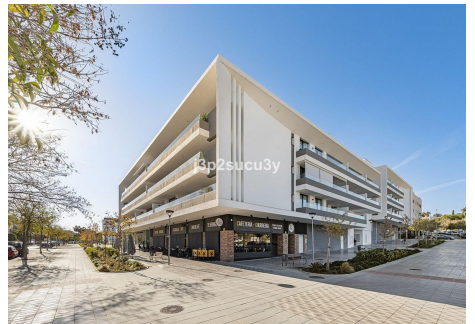
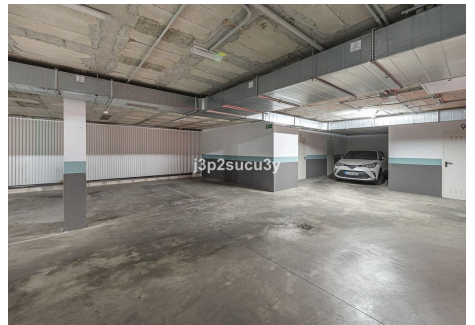
Thanks to its south-facing orientation, this penthouse is bathed in natural light throughout the day, creating a warm and enveloping atmosphere. The complex also offers a well-maintained inner garden where you can relax on the benches. For your convenience, the property includes an underground parking space, ensuring safety and easy access to your vehicle.

Live in this penthouse where every detail has been designed to provide elegance, comfort, and beauty in one of the most prestigious corners of the Costa del Sol. With all the benefits of city living, surrounded by restaurants, shops, pharmacies, public and private schools, cafés... Only 10 minutes from the beach, 3 km from Puerto Banús, 8 km from Marbella, and just 40 minutes from Málaga Airport.



# BROMLEY ESTATES

## *Marbella*



# BROMLEY ESTATES

*Marbella*

