

BROMLEY ESTATES

Marbella



MIDDLE FLOOR APARTMENT 2 BEDROOMS 2 BATHROOMS IN SAN PEDRO DE ALCANTARA

📍 San Pedro de Alcantara

REF# BEMR4839664 €1,295,000

BEDS

2

BATHS

2

BUILT

99 m²

TERRACE

18 m²

This luxurious 2 bedroom 2 bathroom apartment located in the prestigious beachfront urbanization in San Pedro has been completely transformed with top-quality renovations, offering a modern and sophisticated living experience. Every aspect of the home has been upgraded, including a brand-new water system and electrical wiring throughout.

The kitchen is a chef's dream, featuring sleek, high-end furniture from Germany and the latest Bosch appliances, including a 21-bottle wine cooler, dishwasher for 12, induction cooktop, oven, and microwave. State-of-the-art sensor-activated cabinets add a touch of innovation, while a Philips drinking water filtration system ensures convenience and health. The apartment offers luxurious comfort with heated floors in both bathrooms, and a master switch controls all the lights and outlets, giving you complete control over your space. A central air conditioning system keeps the entire apartment cool, and a built-in safe and digital peephole provide additional security. For ultimate ease, a robotic vacuum cleaner takes care of the floors, and the apartment comes with a two-year warranty on all furniture, appliances, and renovations. This is a

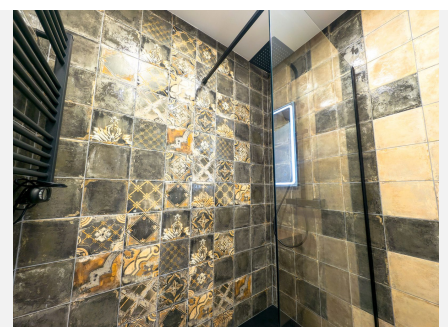
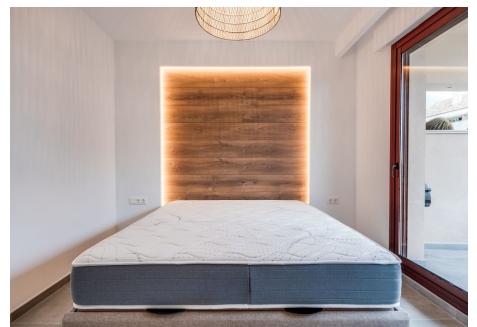
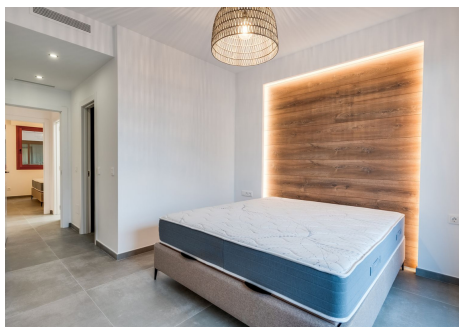
+34 952 939 460 · info@bromleyestatesmarbella.com Urbanizacion El Rosario, CN340, Km 188, Marbella, Malaga 29603

BROMLEY ESTATES

Marbella.

rare opportunity to own a fully renovated, high-end property in one of the most sought-after beachfront locations, where modern luxury meets coastal serenity.

Important note: the pictures of the apartment has been taken right after the renovation finished, some details will be added within this week, including paintings, sculptures, a living room table and others. Reach out for more details and information.



BROMLEY ESTATES

Marbella

