



GROUND FLOOR APARTMENT 3 BEDROOMS 2 BATHROOMS IN BENALMADENA PUEBLO

📍 Benalmadena Pueblo

REF# BEMR4840771 €549,000

BEDS

3

BATHS

2

BUILT

114 m²

TERRACE

31 m²

FANTASTIC CORNER APARTMENT WITH PANORAMIC VIEWS

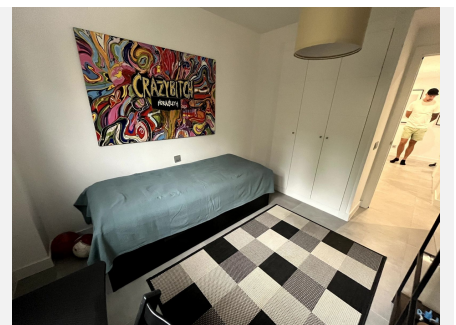
This beautiful corner apartment is located in Benalmadena Pueblo. It is located within walking distance of the city (500mtr) where you have everything you need.

The apartment has a fantastic panoramic view over the whole of Benalmadena and the sea. The apartment has 3 bedrooms and 2 bathrooms, at the same time it has 2 fantastic terraces. The front terrace is 20.3 m² and the side terrace is 10.7 m². The living room is 35m². There is access to the pool area as well as the common room and gym.

This is an apartment that is really worth a closer look, so please contact us immediately for a showing.

BROMLEY ESTATES

Marbella



BROMLEY ESTATES

Marbella

