



PENTHOUSE DUPLEX 3 BEDROOMS 3 BATHROOMS IN LA DUQUESA

📍 La Duquesa

REF# BEMR4850008 €420,000

BEDS

3

BATHS

3

BUILT

130 m²

TERRACE

24 m²

Discover this spectacular DUPLEX PENTHOUSE with spacious interior areas and PANORAMIC SEA VIEWS, located in one of the most charming areas of Manilva, just minutes from the prestigious Puerto de la Duquesa and Sotogrande. This property features two magnificent terraces, perfect for enjoying the beauty of the surroundings and the stunning views of the Mediterranean.

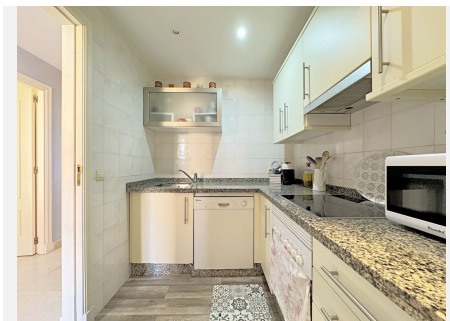
The design of the penthouse stands out for its excellent construction finishes, reflecting quality and sophistication in every detail. Its intelligent layout creates a bright and welcoming atmosphere, ideal for both a primary residence and a lovely second home.

Additionally, the property includes private parking, providing comfort and security to its residents. Situated in a well-maintained community, the penthouse boasts a communal swimming pool surrounded by beautiful gardens, offering a perfect space to relax and enjoy the surroundings.

BROMLEY ESTATES

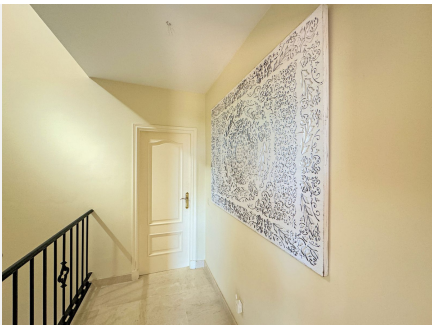
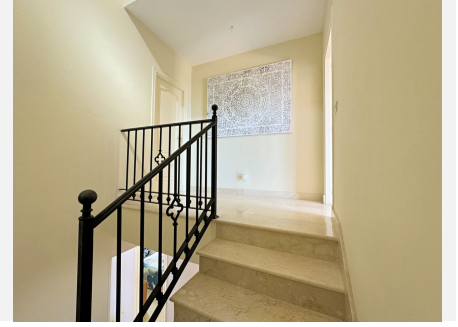
Marbella

The community is well maintained, ensuring peace and security at all times. Don't miss the opportunity to live in this exclusive enclave, with quick access to restaurants, shops, golf courses, and the best beaches on the Costa del Sol. This is an exceptional opportunity that you won't want to miss.



BROMLEY ESTATES

Marbella



BROMLEY ESTATES

Marbella

