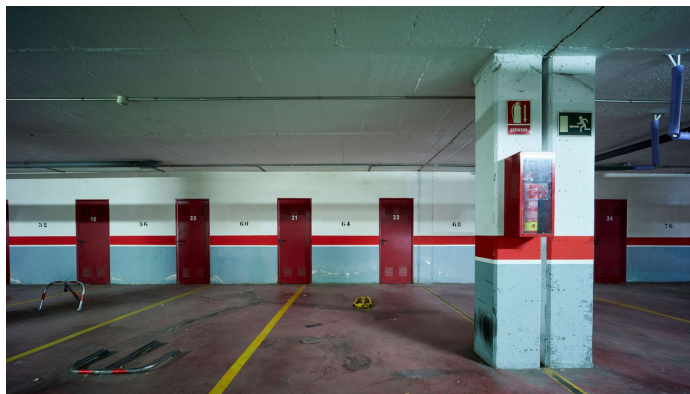


BROMLEY ESTATES

Marbella



GROUND FLOOR APARTMENT 3 BEDROOMS 2 BATHROOMS IN SAN LUIS DE SABINILLAS

📍 San Luis de Sabinillas

REF# BEMR4853548 €469,000

BEDS	BATHS	BUILT	PLOT	TERRACE
3	2	157 m ²	60 m ²	65 m ²

Cozy modern apartment with 3 bedrooms in the gated urbanisation on the first line of the sea. The urbanisation has a swimming pool for adults and children, tennis court. Ground floor with large terrace and private garden. Underground parking, storage room. Floors laminate, fully renovated. Close to all infrastructure – shops, stops, restaurants, beach, centre of Sabinillas

Ground Floor Apartment, San Luis de Sabinillas, Costa del Sol.
3 Bedrooms, 2 Bathrooms, Built 157 m², Terrace 65 m², Garden/Plot 60 m².

Setting : Beachfront, Town, Beachside, Village, Close To Golf, Close To Port, Close To Shops, Close To Sea, Close To Schools, Close To Forest, Close To Marina, Urbanisation, Front Line Beach Complex.

Orientation : East.

Condition : Good, Recently Renovated.

Pool : Communal, Children`s Pool.

Climate Control : Air Conditioning.

+34 952 939 460 · info@bromleyestatesmarbella.com Urbanizacion El Rosario, CN340, Km 188, Marbella, Malaga 29603

BROMLEY ESTATES

Marbella.

Views : Sea, Garden, Courtyard.

Features : Lift, Fitted Wardrobes, Near Transport, Private Terrace, WiFi, Paddle Tennis, Tennis Court, Storage Room, Utility Room, Wood Flooring, Access for people with reduced mobility, Double Glazing, 24 Hour Reception, Day Care, Near Church, Fiber Optic.

Furniture : Part Furnished.

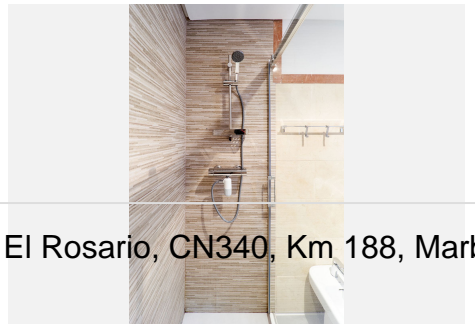
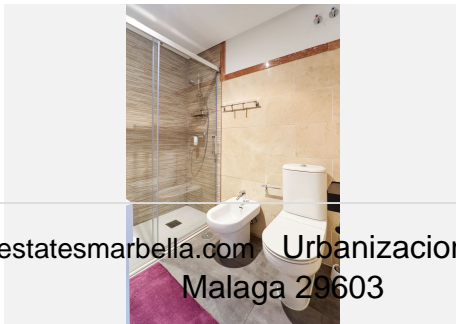
Kitchen : Partially Fitted.

Garden : Communal, Private.

Security : Alarm System, 24 Hour Security.

Parking : Underground, Garage, Covered, Communal, Private.

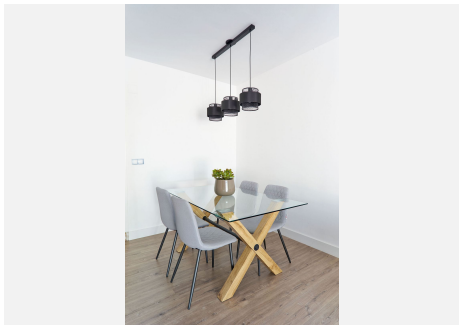
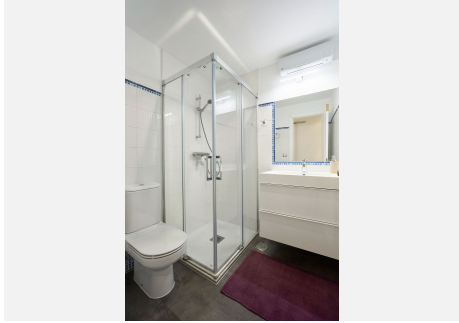
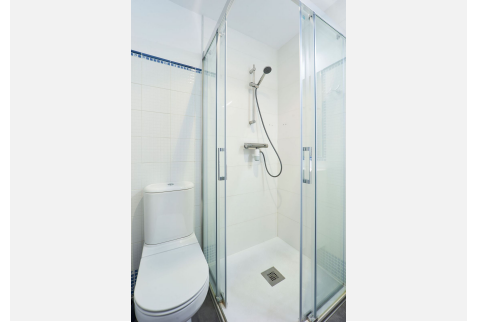
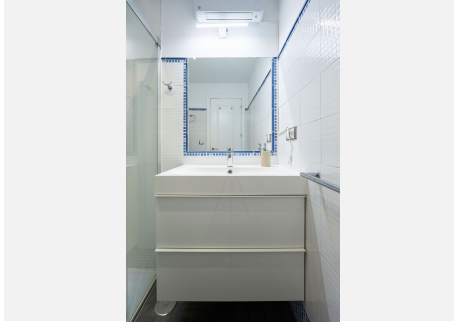
Category : Beachfront, Golf, Holiday Homes, Investment, Resale.



+34 952 939 460 · info@bromleyestatesmarbella.com Urbanizacion El Rosario, CN340, Km 188, Marbella, Malaga 29603

BROMLEY ESTATES

Marbella



BROMLEY ESTATES

Marbella

