



TOWNHOUSE 3 BEDROOMS 3 BATHROOMS IN CALAHONDA

📍 Calahonda

REF# BEMR4854598 €345,000

BEDS

3

BATHS

3

BUILT

162 m²

Charming Townhouse with Endless Potential in Lower Calahonda

Discover a fantastic opportunity with this spacious three-bedroom, three-bathroom townhouse nestled in the sought-after lower Calahonda area. Located in a quaint urbanization of just six homes, this south-facing property offers everything you need right at your doorstep—beaches, shops, and commercial centers are all within walking distance. The townhouse provides easy parking and is perfect for anyone seeking both convenience and potential.

This home offers a generous layout across three levels, ready to be transformed into a stunning family residence. Ground Floor: You'll find a welcoming hallway, a guest toilet, a separate kitchen, and a large open-plan living and dining area, filled with light from double-glazed windows overlooking the private garden. There's also a convenient storeroom here for all your essentials. Second Floor: Two spacious bedrooms await, each with ample space, including one with an en-suite bathroom and dressing room. A

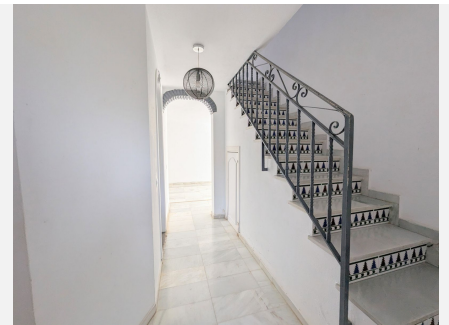
+34 952 939 460 · info@bromleyestatesmarbella.com Urbanizacion El Rosario, CN340, Km 188, Marbella, Malaga 29603

BROMLEY ESTATES

Marbella

guest bathroom is also available on this level. Top Floor: Enjoy a private retreat with a lovely terrace, a large bathroom, and an additional bedroom, perfect for guests or family members needing extra privacy.

The property is set within a peaceful and friendly community that shares a beautiful pool—ideal for those hot summer days. While this townhouse does need renovation, it is priced accordingly, making it an exceptional investment opportunity. Imagine the possibilities as you transform this hidden gem into a large, beautiful family home in one of the most desirable locations in Calahonda. With sunshine and community charm in abundance, this is a property not to be missed!



BROMLEY ESTATES

Marbella



BROMLEY ESTATES

Marbella

