



TOWNHOUSE 3 BEDROOMS 3 BATHROOMS IN BENALMADENA PUEBLO

📍 Benalmadena Pueblo

REF# BEMR4867678 €595,000

BEDS

3

BATHS

3

BUILT

176 m²

PLOT

400 m²

TERRACE

60 m²

Elegant Townhouse with Panoramic Views in Rancho Domingo, Benalmádena

Discover this stunning 3-bedroom with terraces (+2-bedroom in basement floor) townhouse spread over three levels, nestled in the exclusive Rancho Domingo area of Benalmádena. This spacious property offers an exceptional blend of comfort, privacy, and breathtaking views of the mountains, city, and Mediterranean Sea.

Upon entering, you'll be welcomed by a bright, expansive living room that opens up to multiple terraces, perfect for enjoying the panoramic scenery and alfresco dining. The fully fitted kitchen is ideal for culinary enthusiasts, equipped with everything you need to entertain and prepare meals in style.

The property boasts 5 well-sized bedrooms, including a luxurious master suite with its own private terrace, two additional bedrooms, and two more bedrooms conveniently located on the basement level, providing

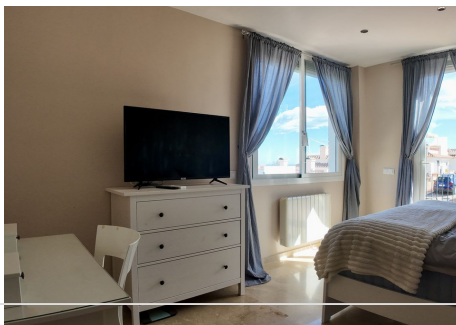
BROMLEY ESTATES

Marbella

direct access to the garage.

Outside, a private garden and pool offer a tranquil retreat, while the community pool allows for extra relaxation shared with neighbors. Whether you're seeking a family home or a vacation retreat, this townhouse provides the perfect balance of modern living and serene surroundings.

Don't miss the opportunity to own this exceptional property in one of Benalmádena's most sought-after communities!



BROMLEY ESTATES

Marbella.



BROMLEY ESTATES

Marbella



BROMLEY ESTATES

Marbella

