

BROMLEY ESTATES

Marbella



MIDDLE FLOOR APARTMENT 2 BEDROOMS 2 BATHROOMS IN BENALMADENA COSTA

📍 Benalmadena Costa

REF# BEMR4869343 €405,000

BEDS

2

BATHS

2

BUILT

132 m²

TERRACE

55 m²

This beachfront apartment is offering a stunning panoramic sea view with a south facing balcony, conveniently located just a short walk from the beach.

Whether you are seeking a permanent residence or a vacation getaway, this property presents an excellent opportunity with significant potential. It also serves as a strong investment option due to its favorable rental prospects.

The apartment features two spacious bedrooms and one and a half bathrooms, equipped with a split air conditioning system for both heating and cooling in every room. Additional highlights include a large patio with a barbecue area, a covered storage shed, and an underground parking space. Other amenities consist of a security alarm and fiber optic internet.

Balcón de Benalmádena is a popular residential community ideally situated near Carvajal Beach. The complex offers a swimming pool area with panoramic sea views, a grassed area around it and a small

+34 952 939 460 · info@bromleyestatesmarbella.com Urbanizacion El Rosario, CN340, Km 188, Marbella, Malaga 29603

BROMLEY ESTATES

Marbella.

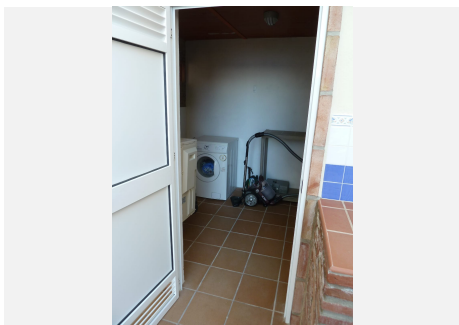
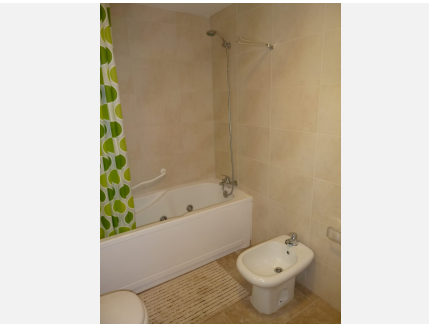
plunge pool for the kids.

This prime location provides easy access to key areas, including Benalmádena's center, featuring a beautiful port and numerous attractions. Additionally, the surrounding coastline is home to several golf courses, such as Torrequebrada Golf, which is approximately a 12-minute drive away, and the renowned La Cala Golf Club, about a 30-minute drive from the apartment.

The beach Playa de Tajo de la Soga is located 900 meters from the apartment en Carvajal and so is playa de Carvajal with several beach bars and chiringuitos.

Additionally, for a pleasant nature walk, El Sendero del Mar is only 1.6 km from the apartment.

Malaga Airport is just a 30-minute drive or a 40-minute train ride away, providing convenient travel options. The nearest train station is Carvajal, located 1.1 km from the apartment, with trains to Malaga departing every 30 minutes.



BROMLEY ESTATES

Marbella

