



MIDDLE FLOOR APARTMENT 1 BEDROOM 1 BATHROOM IN TORREMOLINOS

📍 Torremolinos

REF# BEMR4877026 €270,000

BEDS

1

BATHS

1

BUILT

56 m²

Bright 1-Bedroom Apartment with Terrace & Balcony – Ideal Holiday Investment, Close to the Beach in Paloma Park, Benalmádena

Located just a short stroll from the beach and nestled in the sought-after area of Paloma Park, Benalmádena, this charming 1-bedroom apartment offers the perfect combination of comfort, convenience, and fantastic investment potential. Situated on the 11th floor of a well-maintained building with elevator access, this 56 m² apartment is ideal for those seeking a peaceful retreat with stunning views and proximity to the beach, local parks, and vibrant amenities.

The apartment features a spacious, bright living area with a desirable south-east orientation, ensuring an abundance of natural light throughout the day. The open-plan layout creates a welcoming atmosphere, ideal for both relaxing and entertaining. The living room opens directly onto a private terrace, offering lovely views of the surrounding area, and there's also a small balcony to enjoy the fresh air and sunshine at any time.

+34 952 939 460 · info@bromleyestatesmarbella.com Urbanizacion El Rosario, CN340, Km 188, Marbella, Malaga 29603

BROMLEY ESTATES

Marbella

The bedroom is comfortable and equipped with built-in wardrobes, providing ample storage for convenience. The well-maintained bathroom is practical and perfect for everyday use.

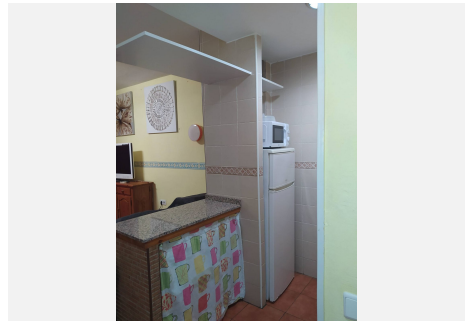
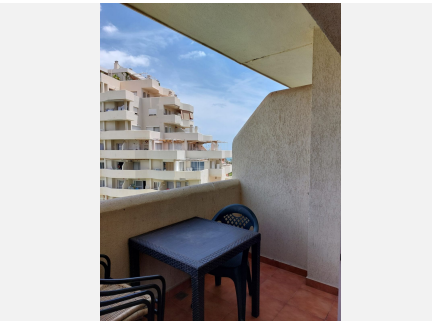
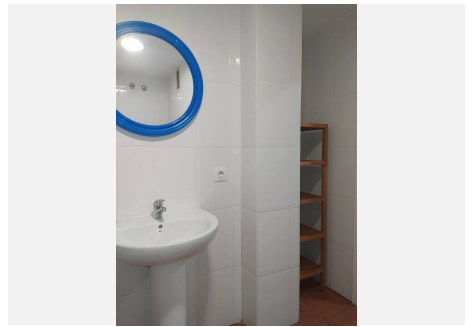
For year-round comfort, the apartment comes with air conditioning and individual heating. The building, constructed in 1985, is in good condition and includes an elevator for easy access to the 11th floor.

One of the standout features of this property is its location within a peaceful urbanization that offers fantastic communal amenities, including a large swimming pool and beautifully landscaped green areas. These amenities are perfect for enjoying Marbella's enviable climate, whether you're relaxing by the pool or strolling through the greenery.

Paloma Park, a beautiful and expansive green space, is just moments away, providing the perfect place to enjoy outdoor activities or simply unwind amidst nature. In addition, the apartment is within walking distance of the beach, local shops, restaurants, and the charming amenities that Benalmádena has to offer.

This property represents a great opportunity for those looking for a holiday retreat or an investment property, with excellent potential for short-term rentals due to its prime location and desirable amenities. The close proximity to the beach, park, and local attractions makes it a highly sought-after destination for both tourists and residents alike.

Don't miss out on the chance to own this beautiful apartment in one of the best areas of Benalmádena. Contact us for more information and to arrange a viewing!



BROMLEY ESTATES

Marbella

