

# BROMLEY ESTATES

*Marbella.*



## MIDDLE FLOOR APARTMENT 2 BEDROOMS 1 BATHROOM IN RIVIERA DEL SOL

📍 Riviera del Sol

REF# BEMR4883974 €350,000

BEDS

2

BATHS

1

BUILT

76 m<sup>2</sup>

TERRACE

7 m<sup>2</sup>

High quality refurbished apartment with lovely sea views in Riviera del Sol in Mijas-Costa  
New windows and 3 sliding doors to the balcony total 2950 mm broad, with high quality thermal values.  
Double glass composition 4+16+6, with argon gas inside the chamber.  
Complete new electric installation.  
Spotlights in whole apartment and on the balcony, all are dim switches with memory (not in the bathroom)  
Completely new drainage. Completely new water installation.  
New big water boiler of 200 liters.  
All the walls are newly done with plaster.  
PVC floor with extra under layer for noise reduction.  
All new mdf sliding doors with frames. All skirting board with rubber seal to the wall and floor-front door inside is covered with white MDF and insulation inside.  
Induction plate Bora Puxa and with re circulation system.

+34 952 939 460 · info@bromleyestatesmarbella.com Urbanizacion El Rosario, CN340, Km 188, Marbella, Malaga 29603

# BROMLEY ESTATES

*Marbella*

Design kitchen top nature stone/ceramic resistant for high temperature. With oven, refrigerator automatically defrosting, dishwasher, all Whirlpool (Philips)

Sink with drip tray color mat black with tap color mat black all Reginox

All cabinets with sliding drawers equipped with a braking system and equipped with black mat hand grips.

Corner cabinet with internal platter with mechanical rotation.

Hanging cabinets equipped with pressure closing system.

New air conditioning Samsung A++. Heating and cooling entrance, 1 in the living room and 1 in each bedroom. Ventilation system in whole apartment. Brand new furniture.

In the bathroom tiles sizes 220 high it's has a big advantage less joints and easy to clean and sustainable !!!

Shower cabinet with extra strong glass and the door is removable for cleaning. Shower head color mat black, hand shower color mat black, shower tap integrated in the wall color Matt black all from Kohlman.

Design sink table color green with with sink and with tap color black Kohlman with round mirror 90 cm, LED light, with heating system. Custom made closet.

Wash and dry machine Whirlpool (Philips), integrated in the closet bathroom.

Electric Italian design radiator with function to heat the whole bathroom.

Gated complex with camera surveillance and open bicycle shed will be built this year

Three minutes walk to the shops, bar and restaurants

Five minutes walk to the beach

Five minutes walk to MAXBEACH

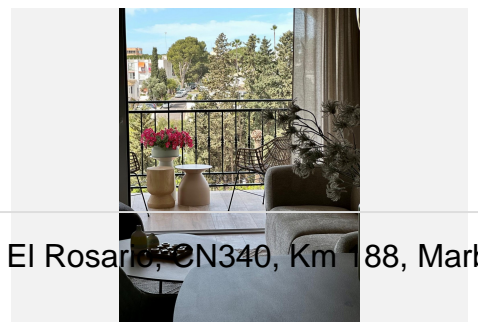
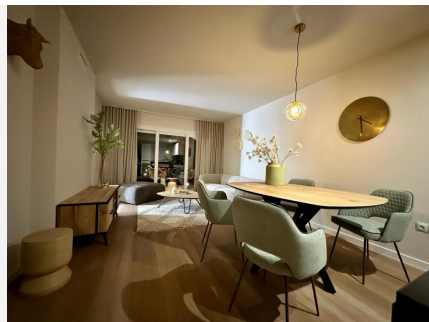
Three minutes walk to the taxi stop

Five minutes to the bus stop

Three minutes walk to fitness club

Three minutes walk to tennis and paddel club

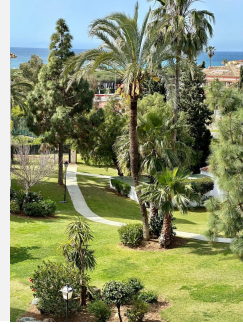
Marbella centre is only 18 km away and the airport of Málaga only 37 km.



+34 952 939 460 : [info@bromleyestatesmarbella.com](mailto:info@bromleyestatesmarbella.com) Urbanizacion El Rosarillo, CN340, Km 188, Marbella, Malaga 29603

# BROMLEY ESTATES

*Marbella*



# BROMLEY ESTATES

*Marbella*

