



TOWNHOUSE 3 BEDROOMS 3 BATHROOMS IN LA CAPELLANIA

📍 La Capellania

REF# R4890064 €565,000

BEDS

3

BATHS

3

BUILT

257 m²

PLOT

214 m²

TERRACE

214 m²

Welcome to Your New Home in Benalmádena!

This stunning 3-bedroom townhouse, fully renovated with top-quality finishes, offers the perfect blend of luxury, comfort, and an unbeatable location.

Imagine living in a home designed for maximum enjoyment, featuring a charming patio and a private garden—ideal for outdoor dining, relaxation, and even the possibility of adding a small private pool. From the front porch and the bedrooms, you can enjoy partial sea views that will remind you daily of your proximity to paradise.

The recent renovations include premium features:

- A modern kitchen equipped with high-end appliances.
- Fully renovated bathrooms, stylish and functional.

+34 952 939 460 · info@bromleyestatesmarbella.com Urbanizacion El Rosario, CN340, Km 188, Marbella, Malaga 29603

BROMLEY ESTATES

Marbella

- Triple-reinforced glazing throughout, with electric shutters for added comfort.
- A spacious living-dining room with a fireplace, perfect for cozy evenings.
- Air conditioning in the living room and the master bedroom.
- Solar panels for hot water, ensuring energy efficiency.

The master bedroom, complete with an en-suite bathroom, opens onto a private terrace where you can enjoy peaceful sea views.

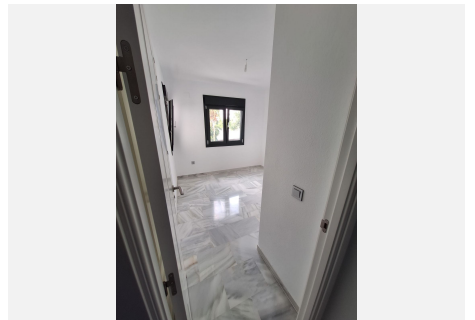
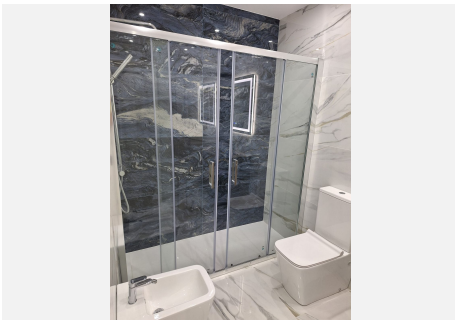
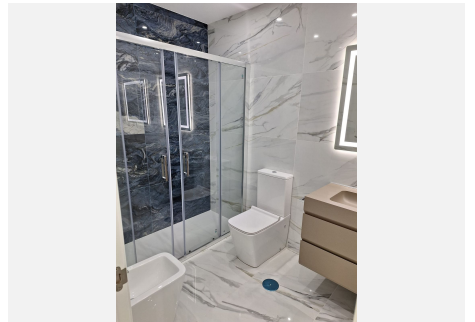
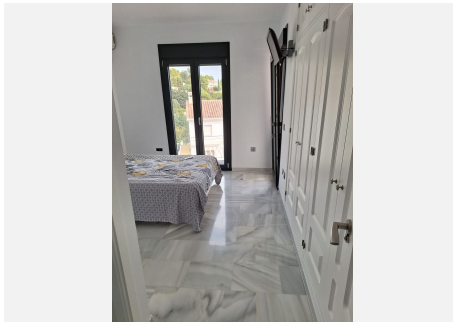
The property also includes a garage with space for two cars, room for a third vehicle or motorbikes, and a convenient storage room. To top it off, you'll have access to a community pool, completing this unique offering.

Located in a quiet residential area, this home is just minutes from the beaches, bars, and restaurants, offering the perfect balance of tranquility and convenience. Plus, it's only 15 minutes from the airport and 25 minutes from Marbella.

Property Details:

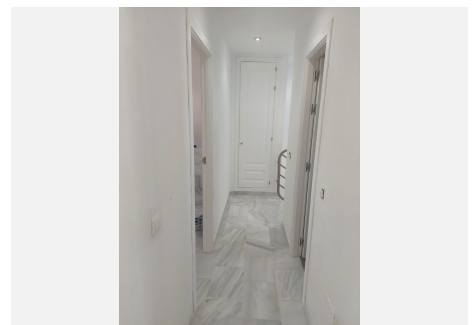
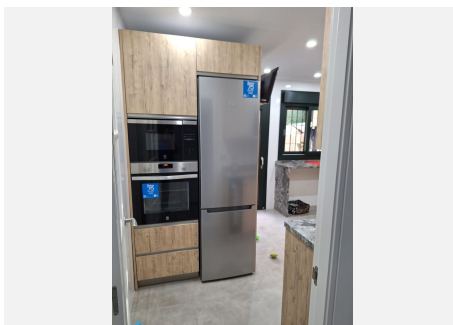
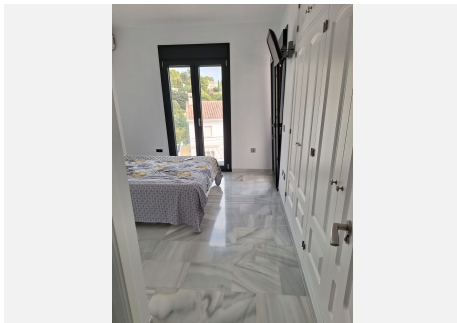
- Living area: 128 m²
- Basement (garage + storage room): 64 m²
- Garden/patio: 80 m²
- Terrace/solarium: 70 m²

This is the opportunity you've been waiting for. Contact us today and make your dream of living in Benalmádena a reality!



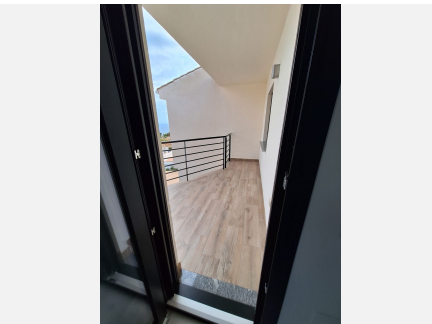
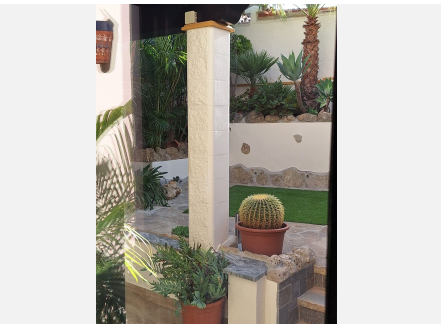
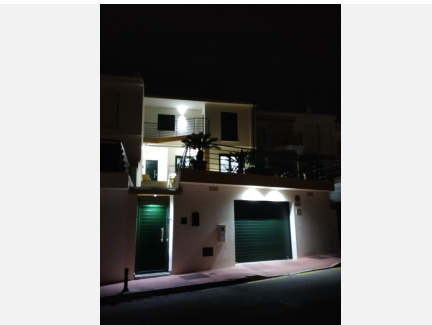
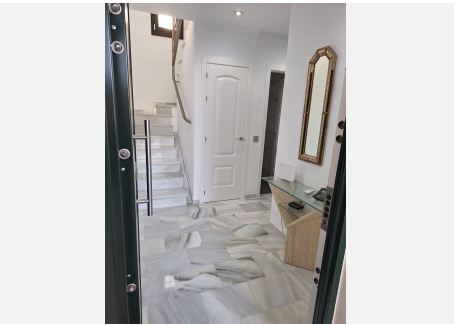
BROMLEY ESTATES

Marbella



BROMLEY ESTATES

Marbella



BROMLEY ESTATES

Marbella

