



PENTHOUSE DUPLEX 4 BEDROOMS 4 BATHROOMS IN ELVIRIA

📍 Elviria

REF# R4890589 €1,449,000

BEDS

4

BATHS

4

BUILT

233 m²

TERRACE

286 m²

This stunning duplex penthouse in Elviria presents a unique opportunity for both investment and personal enjoyment, boasting unparalleled sea views and a prime location just moments from all amenities and the beach in Elviria.

With generous proportions and a sleek, modern design, the property features four spacious bedrooms, each with its own en-suite bathroom, plus an additional guest toilet conveniently located next to the living area. The bedrooms are thoughtfully arranged over two levels to ensure maximum comfort and privacy.

Upon entering the penthouse from either the garage or the main entrance, the private elevator opens into a welcoming foyer that leads into a bright and airy living room with soaring ceilings, creating a sense of openness and elegance. This level also includes a formal dining area, and a contemporary, open-plan kitchen equipped with high-end appliances, including a professional ice maker. A large wraparound terrace encircles the entire apartment, offering over 200 m² of outdoor space and direct access to the community

+34 952 939 460 · info@bromleyestatesmarbella.com Urbanizacion El Rosario, CN340, Km 188, Marbella, Malaga 29603

BROMLEY ESTATES

Marbella

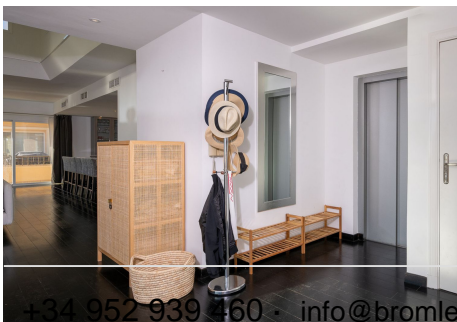
pools.

Two of the bedrooms and bathrooms are located on this floor, providing ample comfort and functionality. Each room features beautiful, custom-built wardrobes with wood lining, designed for both style and practicality. The bathrooms are equipped with automatic solar-powered ventilation, ensuring comfort and sustainability.

On the upper level, you'll find two additional bedrooms, two bathrooms, and a spacious private terrace — ideal for relaxation while enjoying panoramic sea views. Throughout the penthouse, beautiful wooden floors add warmth and sophistication to every room. Notably, all the bedrooms are furnished with premium “Jensen” brand beds, ensuring ultimate comfort and luxury.

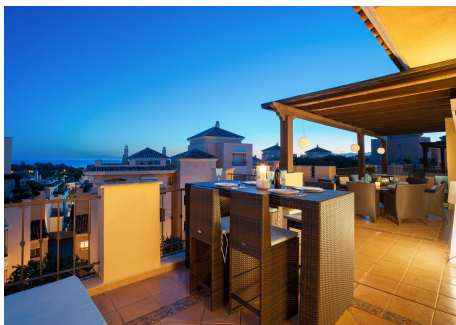
The penthouse is ideally situated with direct access to the community pools, which are easily visible from the terrace, making it a perfect family home, especially for those with young children.

Additional features include two parking spaces and a storage room, adding convenience and practicality. Whether as a year-round residence or a luxurious holiday retreat, this penthouse perfectly blends comfort, style, and an enviable location in Elviria, Marbella.



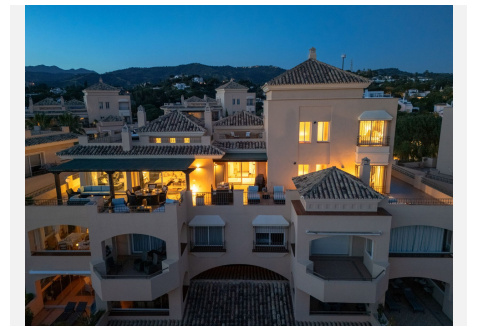
BROMLEY ESTATES

Marbella



BROMLEY ESTATES

Marbella



BROMLEY ESTATES

Marbella

