

# BROMLEY ESTATES

*Marbella*



## HOUSE 5 BEDROOMS 4 BATHROOMS IN SIERREZUELA

📍 Sierrezuela

REF# BEMR4895962 €1,295,000

BEDS

5

BATHS

4

BUILT

265 m<sup>2</sup>

PLOT

2306 m<sup>2</sup>

TERRACE

568 m<sup>2</sup>

Elegant 5-Bedroom Villa in La Sierrazuela – Spacious, Stylish, and Convenient

Key Features:

- 5 bedrooms, 4 bathrooms, and 1 guest toilet.
- 265m<sup>2</sup> living area plus 192m<sup>2</sup> covered space.
- Great sea view and overlooking the anticipated 35 hectare park “The Great Park Mijas”
- Large 2,306m<sup>2</sup> low-maintenance plot on just two levels for easy living.
- Grand courtyard atrium serving as the villa’s centerpiece.
- Recent renovations: new windows, modern kitchen, floors, doors etc.
- Prime location: 10 minutes to the beach, 5 minutes to Fuengirola and grocery shopping, and less than 20 minutes to Málaga Airport.

The villa includes a garage and offers a seamless flow of indoor and outdoor spaces, ideal for enjoying the Costa del Sol lifestyle.

+34 952 939 460 · info@bromleyestatesmarbella.com Urbanizacion El Rosario, CN340, Km 188, Marbella, Malaga 29603

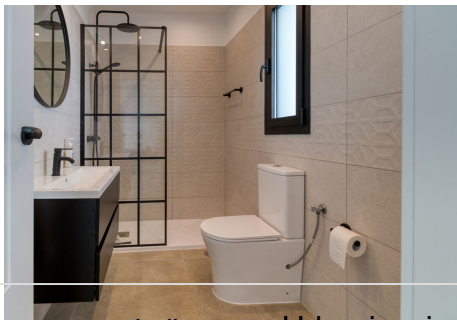
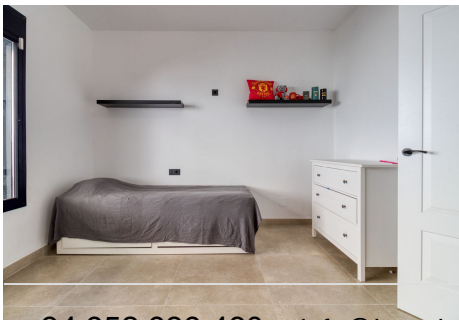
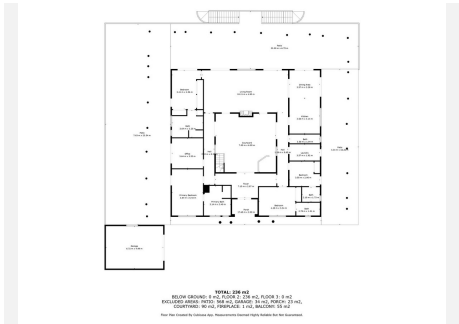
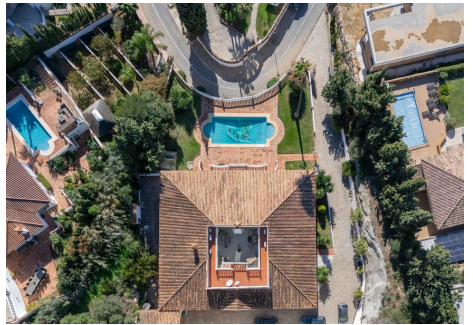
# BROMLEY ESTATES

*Marbella*

## About La Sierrazuela and Surrounding Area:

La Sierrazuela is a peaceful residential area known for its family-friendly environment and proximity to essential amenities. Within minutes, you can enjoy the vibrant city life of Fuengirola with its restaurants, shops, and beautiful beaches. Outdoor enthusiasts will appreciate the nearby hiking trails, golf courses, and water sports.

The Costa del Sol offers a perfect mix of leisure and culture. From world-class golf courses to charming Andalusian villages and the luxury of Marbella's Puerto Banús, there's something for everyone. The villa's location provides easy access to all of this, making it an ideal base for enjoying the best of southern Spain.



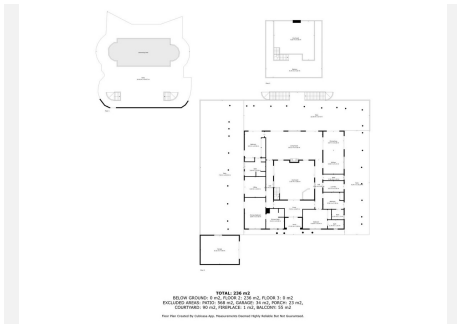
# BROMLEY ESTATES

*Marbella.*



# BROMLEY ESTATES

*Marbella*



TOTAL 229 m<sup>2</sup>  
BENEFICIO AUTÓNOMO EN EL IBI DEL 2,00% (M. IBI 2021) y 2,00% (M. IBI 2022)  
CONDOMINIO: 0,00% (M. IBI 2021) y 0,00% (M. IBI 2022)  
Módulo: 0,00% (M. IBI 2021) y 0,00% (M. IBI 2022)  
Módulo: 0,00% (M. IBI 2021) y 0,00% (M. IBI 2022)