

BROMLEY ESTATES

Marbella



MIDDLE FLOOR APARTMENT 2 BEDROOMS 2 BATHROOMS IN CASARES PLAYA

📍 Casares Playa

REF# BEMR4908178 €365,000

BEDS

2

BATHS

2

BUILT

106 m²

TERRACE

55 m²

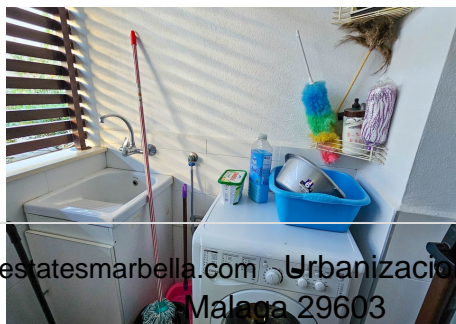
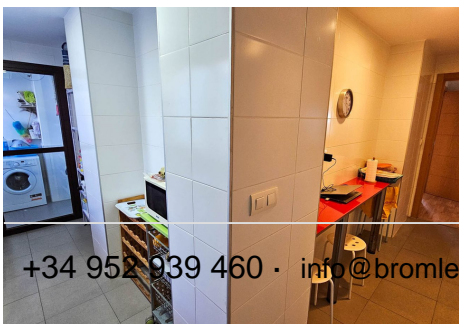
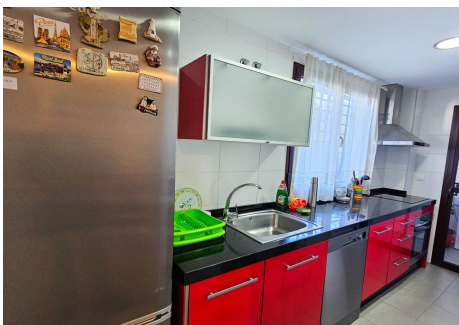
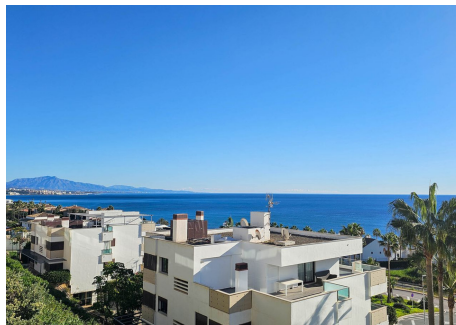
Stunning sea views in this 2 bedroom, 2 bathroom beachfront apartment in this development with communal gardens, paddle tennis court and swimming pool. This spectacular apartment has its entrance on the ground floor, although it is an intermediate floor due to the elevation of the land facing the sea. It is distributed as follows: spacious and bright living-dining room through the large window with beautiful sea views and direct access to the incredible 55m² terrace with covered and uncovered areas, perfect for dining outdoors all year round. The kitchen is independent, L-shaped, has a granite kitchen counter and modern, high-quality furniture, and has a space for laundry and other utilities. The master bedroom is large and has an en-suite bathroom with a bathtub, a large built-in wardrobe and direct access to the terrace. In addition, it has another large room with access to the terrace and a second guest bathroom, also with a bathtub. The property has been built to the highest quality standards with laminate flooring, hot/cold air conditioning system, fitted wardrobes and electric shutters. In addition, it is sold fully furnished and includes a 5m² storage room included in the price. The building also has a lift and video security. The location of the property is ideal, with sea views, a few minutes walk from the nearest beach (about 700 meters), 10 minutes

+34 952 939 460 · info@bromleyestatesmarbella.com Urbanizacion El Rosario, CN340, Km 188, Marbella, Malaga 29603

BROMLEY ESTATES

Marbella

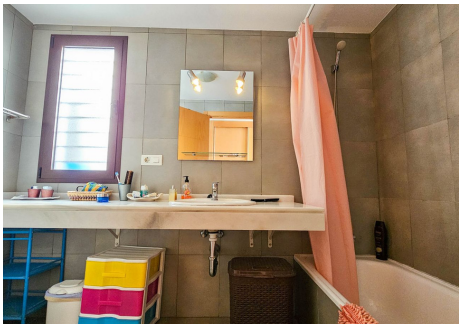
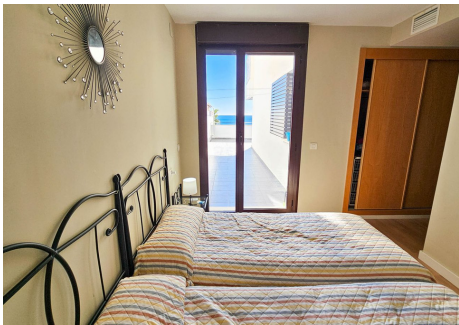
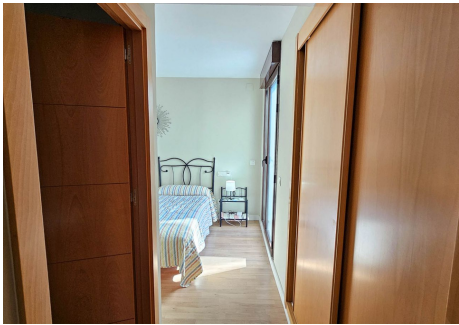
by car from Estepona and La Duquesa beach.



+34 952 939 460 · info@bromleyestatesmarbella.com · Urbanización El Rosario, CN340, Km 188, Marbella, Málaga 29603

BROMLEY ESTATES

Marbella



BROMLEY ESTATES

Marbella

