

BROMLEY ESTATES

Marbella



TOWNHOUSE 4 BEDROOMS 3.5 BATHROOMS IN ESTEPONA

📍 Estepona

REF# BEMR4975822 €595,000

BEDS

4

BATHS

3.5

BUILT

327 m²

Spacious Townhouse in Residencial La Palmera, only a 10-minute walk from the beach.

Spacious Townhouse in Residencial La Palmera, Strategically Located Close to Everything
Just a 10-minute walk from the beach and with excellent access to the A7, this property offers both convenience and accessibility.

With 327 m² of built space, including a 68 m² garage, the house is spread across three floors plus a basement, providing generous living areas.

It features 4 bedrooms, 3 full bathrooms, and a guest WC, making it an ideal home for families. The interiors stand out with spacious rooms, high ceilings, and abundant natural light, complemented by several terraces. The upper floors offer delightful sea views, adding an extra dimension to the living experience.

Located within a peaceful residential complex with only 24 homes, the community boasts spacious common areas and a swimming pool, ensuring a private and tranquil atmosphere.

This property has been meticulously maintained, owned by the same family since it was built 25 years ago.

+34 952 939 460 · info@bromleyestatesmarbella.com Urbanizacion El Rosario, CN340, Km 188, Marbella, Malaga 29603

BROMLEY ESTATES

Marbella

With an average use of just one month per year and never rented out, it has preserved its original charm and quality.

Additionally, its price is slightly below the market average, making it an exceptional opportunity.

A perfect family home for those seeking space, comfort, and a prime location.

Don't miss out on this opportunity—schedule a viewing today!

Contact us for more information and to arrange a visit.



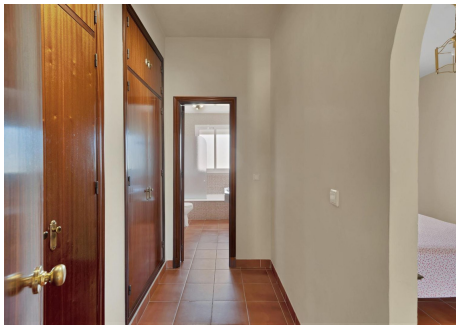
BROMLEY ESTATES

Marbella



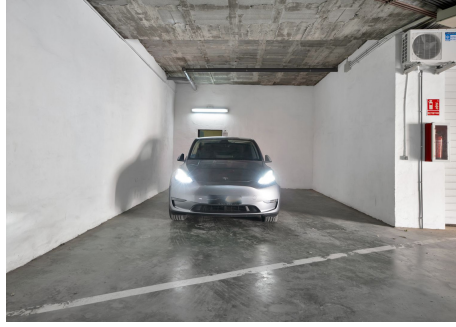
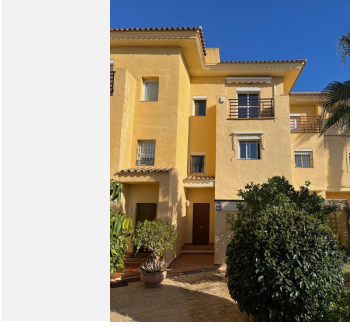
BROMLEY ESTATES

Marbella



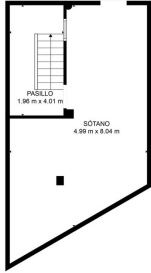
BROMLEY ESTATES

Marbella



BROMLEY ESTATES

Marbella



TOTAL: 120 m²
 SEGUN GRUPO: 1 m², 2. PLANTA: 78 m², 3. PLANTA: 36 m², 4. PLANTA: 44 m²
 AREA COCINA: 20 m², 11 m², 11 m², 11 m², 11 m², 11 m², 11 m², 11 m²
 BALCON: 13 m², ABERTO A ABAJO: 1 m²



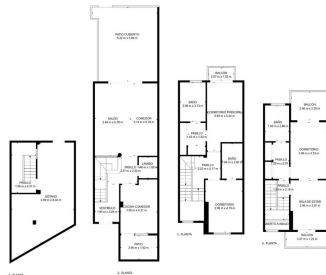
TOTAL: 120 m²
 SEGUN GRUPO: 1 m², 2. PLANTA: 78 m², 3. PLANTA: 36 m², 4. PLANTA: 44 m²
 AREA COCINA: 20 m², 11 m², 11 m², 11 m², 11 m², 11 m², 11 m², 11 m²
 BALCON: 13 m², ABERTO A ABAJO: 1 m²



TOTAL: 120 m²
 SEGUN GRUPO: 1 m², 2. PLANTA: 78 m², 3. PLANTA: 36 m², 4. PLANTA: 44 m²
 AREA COCINA: 20 m², 11 m², 11 m², 11 m², 11 m², 11 m², 11 m², 11 m²
 BALCON: 13 m², ABERTO A ABAJO: 1 m²



TOTAL: 120 m²
 SEGUN GRUPO: 1 m², 2. PLANTA: 78 m², 3. PLANTA: 36 m², 4. PLANTA: 44 m²
 AREA COCINA: 20 m², 11 m², 11 m², 11 m², 11 m², 11 m², 11 m², 11 m²
 BALCON: 13 m², ABERTO A ABAJO: 1 m²



TOTAL: 120 m²
 SEGUN GRUPO: 1 m², 2. PLANTA: 78 m², 3. PLANTA: 36 m², 4. PLANTA: 44 m²
 AREA COCINA: 20 m², 11 m², 11 m², 11 m², 11 m², 11 m², 11 m², 11 m²
 BALCON: 13 m², ABERTO A ABAJO: 1 m²