



GROUND FLOOR APARTMENT 2 BEDROOMS 2 BATHROOMS IN CALAHONDA

📍 Calahonda

REF# BEMR4976155 €325,000

BEDS

2

BATHS

2

BUILT

86 m²

TERRACE

21 m²

A fabulous elevated ground floor apartment with breathtaking panoramic sea views.

El Puente III is a quiet Urbanisation in the upper part of Calahonda, close to the well known Miel y Nata restaurant.

To enter the property you will take a flight of stairs down to the main entrance door.

From point of entry you will be overwhelmed by the views!

Living and dining room with access to a spacious south facing terrace with glass curtains.

From the kitchen you enter to a spacious utility area with access to plenty of storage space.

The kitchen and the 2 bathrooms got fully renovated.

The master bedroom also facing south facing, has its own en-suite bathroom.

The second bedroom is a double bedroom currently being used as a bedroom/study, but it will easily accommodate a double bed or twin single beds.

The windows are upvc double glazing.

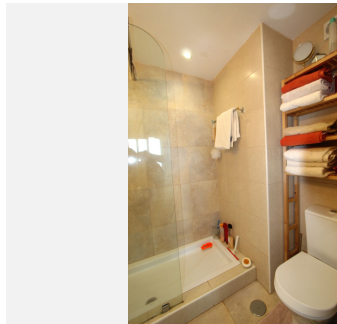
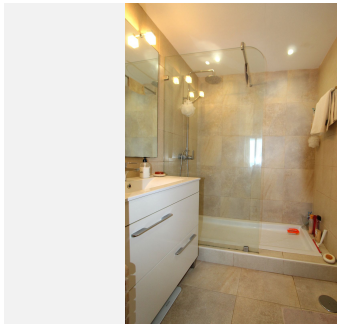
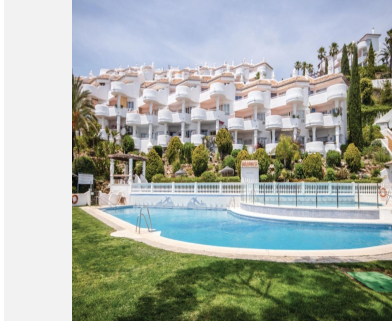
The Urbanisation has manicured gardens and a lovely pool area.

+34 952 939 460 · info@bromleyestatesmarbella.com Urbanizacion El Rosario, CN340, Km 188, Marbella, Malaga 29603

BROMLEY ESTATES

Marbella

Street Parking is available and a bus stop is 350m away.
Malaga Airport is 25mins away.



+34 952 939 460 - info@bromleyestatesmarbella.com - Urbanizacion El Rosario, CN340, Km 188, Marbella, Malaga 29603

BROMLEY ESTATES

Marbella

