



PENTHOUSE 2 BEDROOMS 2 BATHROOMS IN ESTEPONA

📍 Estepona

REF# R4992916 €589,000

BEDS

2

BATHS

2

BUILT

92 m²

TERRACE

27 m²

Corner Apartment with Spectacular Sea Views – Estepona West
Investment Opportunity!

The community has just approved the issuing of new tourist rental licenses in line with the latest regulations — making this apartment a perfect investment for short-term rentals.

This modern home offers a spacious terrace with beautiful sea views, two supermarkets and a Burger King just next door, and it's only a 5-minute walk to the beach. Estepona is just a 7-minute drive or a pleasant coastal walk away. What more could you wish for on a holiday?

Discover this exceptional 2-bedroom, 2-bathroom corner apartment, located in the very best position within a boutique gated community in Estepona West. This south-facing, front-line unit offers uninterrupted panoramic views of the Mediterranean, plus total privacy and sunlight all day long.

This is the standout home in the entire complex — a rare combination of corner location, sea views, and high-end design.

+34 952 939 460 · info@bromleyestatesmarbella.com Urbanizacion El Rosario, CN340, Km 188, Marbella, Malaga 29603

BROMLEY ESTATES

Marbella

Highlights:

Just steps from the sea – walk to the beach in minutes

Panoramic sea views from the spacious terrace and living areas

Corner unit in front-line block – the most sought-after location in the community

Sun-drenched interiors – south-facing living areas, north-facing bedrooms for cooler nights

Stylish & move-in ready – partially furnished with new, modern pieces

Eco-friendly living – energy-efficient with solar panels

Private underground parking + large 12.5 m² storage room included

Exclusive amenities – swimming pool, gym, landscaped gardens,

Fully wheelchair accessible – elevator, step-free design, wide doors

Top location:

by walk: 5min to beach, 1 min. to shops and restaurants in front of the complex, 1 min. to tennis and paddle courts just behind the complex

by bicycle or nice walk on the coastal path Senda Litoral de Estepona you can enjoy to reach several beaches, Estepona or Puerto de la Duquesa

by car – a few minutes to Estepona Marina or historic Old Town, also to Puerto de la Duquesa

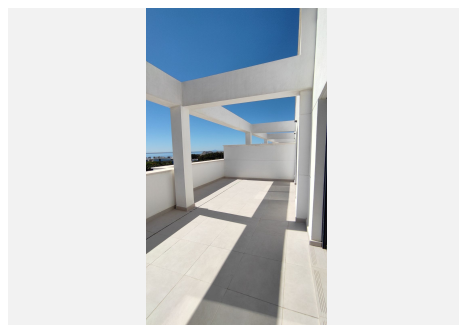
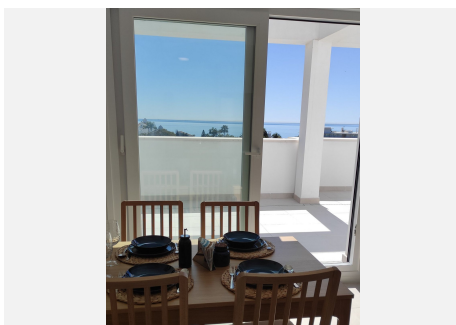
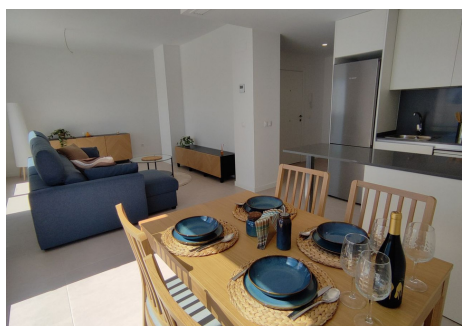
20 min to Puerto Banús & Marbella, 45 min to Málaga Airport

Surrounded by top golf courses like Estepona Golf & Valle Romano

Whether you're searching for a modern coastal home, a holiday getaway, or a turnkey investment, this apartment delivers unmatched value and location.

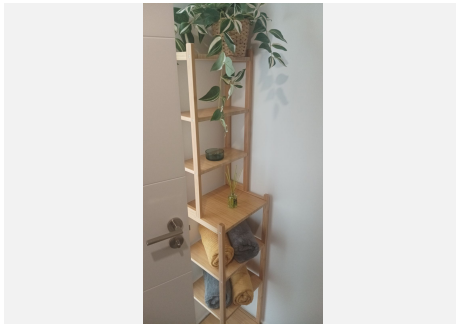
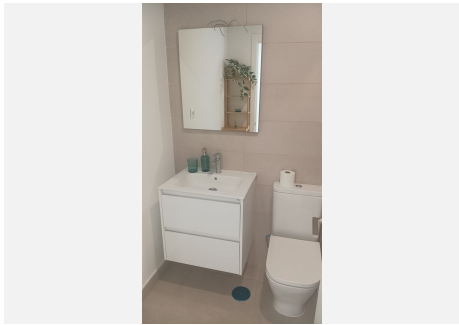
Ready to move in – with keys in hand!

Contact us today to arrange your private viewing of this spectacular property.



BROMLEY ESTATES

Marbella



BROMLEY ESTATES

Marbella

