



## PENTHOUSE DUPLEX 3 BEDROOMS 2 BATHROOMS IN LA QUINTA

📍 La Quinta

REF# BEMR5002753 €825,000

BEDS

3

BATHS

2

BUILT

170 m<sup>2</sup>

TERRACE

77 m<sup>2</sup>

Presenting this wonderful 3 bedroom 2 bathroom duplex penthouse situated in one of La Quinta's desirable communities with breath taking views to the sea and the la Quinta golf course. Entering the gated complex you have your own parking space directly outside the entrance to the apartment. No stairs or lift are required for this property as the access is direct from the parking space to the apartment block. Entering the property you are immediately drawn to the wonderful views, high ceilings and the brightness of the property, large kitchen and utility room to the left, turn right a living and dining area, large bedroom off the living room and another bedroom at the back, Bathroom to share for the 2 bedrooms downstairs.

Large terrace from the living room and bedroom with sea, golf and mountain views. Upstairs you have a large master bedroom, walk in closet and large bathroom en suite. The terrace comes with storage, hot tub and large seating area. Views are un interrupted and comes with lots of privacy.

Situated just five minutes from the La Quinta Golf Clubhouse, the property is ideally located for both leisure and convenience. Marbella's historic town center is only 15 km away, and the glamorous Puerto Banús is



# BROMLEY ESTATES

*Marbella*

just 7 km from your doorstep. With the beach only a 6 km drive, this apartment perfectly combines serene living with easy access to vibrant coastal attractions.

Whether you're seeking a luxurious holiday retreat or a year-round residence, this property offers unparalleled comfort and breath taking surroundings. The spacious layout, modern design, and idyllic setting make this more than just a home – it's a lifestyle. Night time security included in the community





# BROMLEY ESTATES

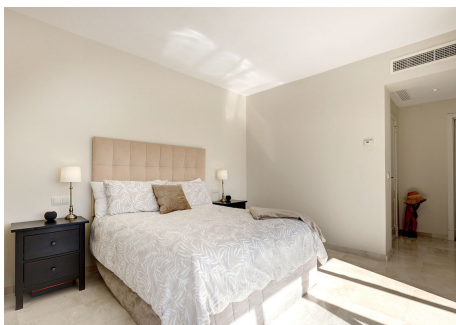
## *Marbella*





# BROMLEY ESTATES

## *Marbella*





# BROMLEY ESTATES

## *Marbella*

