



PENTHOUSE DUPLEX 3 BEDROOMS 2 BATHROOMS IN EL PARAISO

📍 El Paraiso

REF# R5010223 €440,000

BEDS

3

BATHS

2

BUILT

115 m²

TERRACE

80 m²

Please read the description before requesting a viewing!

This is a touristic investment apartment. The owner can stay up to 60 days per year, while the resort manages and rents it short-term the rest of the year, providing passive income.

Elegant Duplex Penthouse with Panoramic Sea and Golf Views in Benahavis.

Ideal for investment, as the short-term rentals are managed by the on-site resort management team.

Set within one of Benahavis' most prestigious residential enclaves, this stunning duplex penthouse offers an exceptional blend of sophistication, comfort, and uninterrupted views of the Mediterranean and surrounding golf courses. Perfect as a private retreat or investment, the property comes with a professional rental management program already in place, ensuring seamless income generation.

Step inside to discover a beautifully designed interior flooded with natural light, thanks to expansive floor-to-ceiling glass doors that open onto a generous terrace. The contemporary kitchen is fully equipped with premium appliances and ample workspace, ideal for both entertaining and everyday living.

+34 952 939 460 · info@bromleyestatesmarbella.com Urbanizacion El Rosario, CN340, Km 188, Marbella, Malaga 29603

BROMLEY ESTATES

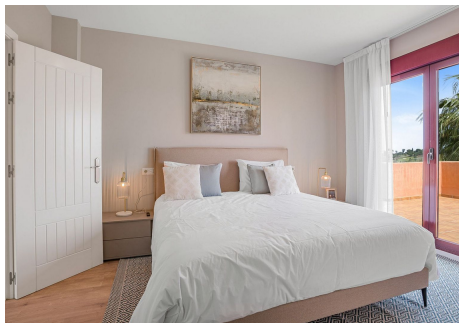
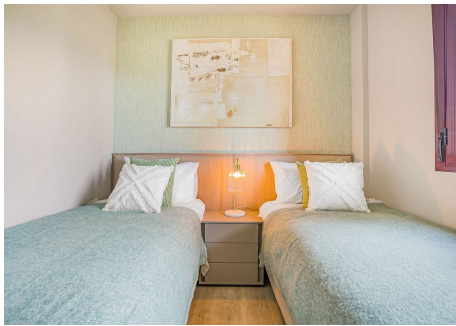
Marbella

The layout includes three spacious bedrooms and three elegant bathrooms, including a lavish en-suite. Spanning 214 m² of interior living space, the property is complemented by an impressive 83 m² terrace, perfect for alfresco dining, sunbathing, or simply taking in the peaceful scenery.

Within the secure, gated community, residents enjoy a full suite of amenities: multiple swimming pools, lush landscaped gardens, a fully equipped gym, and a co-working space for those blending lifestyle with business. A private garage space and 24-hour security add extra comfort and convenience.

Benahavis is known for its picturesque charm, gourmet dining, and proximity to some of the region's top golf courses such as El Paraiso, Atalaya, Guadalmina, and Villa Padierna. Just a short drive away are the vibrant centers of Marbella and Estepona, offering access to world-class beaches, restaurants, and high-end shopping. Whether you seek the energy of Puerto Banús or the relaxed vibe of coastal living, this location provides the best of both worlds.

This turnkey penthouse presents an ideal balance between luxurious living and smart investment. Don't miss your chance to secure a home that delivers both lifestyle and long-term value—contact us for more details or to schedule a private viewing.



BROMLEY ESTATES

Marbella

