

## RESIDENTIAL PLOT BEDROOMS BATHROOMS IN ALHAURIN DE LA TORRE

📍 Alhaurin de la Torre

REF# R5019700 €235,000

BEDS

BATHS

BUILT

m<sup>2</sup>

PLOT

350 m<sup>2</sup>

3494-V Unique Opportunity: Developable Land with a Single-family House Project and a Building Permit granted and paid. You can start building immediately. Geotechnical study, Basic Project and Execution Project, visas, municipal taxes.

Plot with the best orientation, southeast, the main facade faces a beautiful park and the rear facade has clear views.

We present you an excellent investment opportunity in a privileged environment. This developable land has a project for a semi-detached house with a contemporary design.

Main features:

– Strategic location: Located at Alhaurín de la Torre, you will enjoy the tranquility of an expanding area, but with the convenience of being close to everything. Just 10 minutes from the airport and 15 minutes from the center of Malaga, you will have quick access to essential services, shops and main communication routes. Ideal for both living and investing.

– Project included: Semi-detached house with 3 bedrooms, 2 dressing rooms, 3 bathrooms, 1 toilet, ironing  
+34 952 939 460 · info@bromleyestatesmarbella.com Urbanizacion El Rosario, CN340, Km 188, Marbella, Malaga 29603

# BROMLEY ESTATES

*Marbella*

room, pantry, basement with separate entrance and with a modern design that maximizes comfort and the use of spaces, offering spacious and bright interiors.

– Current status: Basic and execution project drawn up with building permit granted.

– Plot area: 350.72m<sup>2</sup> with a designed house of 245.68m<sup>2</sup> built and spacious exteriors to enjoy a large space designed with a swimming pool, garden, terraces.....

– Residential use: Ideal for families looking for their perfect home or for investors looking for a development with high future revaluation.

This land is the perfect option for those who want to materialize a personalized project or take advantage of a real estate investment in a growing area. Don't miss this opportunity!

In compliance with the decree of the Junta de Andalucía 208/2005 of October 11, clients are informed that the notarial, registry, i. t. p, and other expenses inherent to the sale, are not included in the price.

The data provided is for informational purposes only and has no contractual value. The offer is subject to errors, changes in price, availability and/or withdrawal from the market without prior notice.

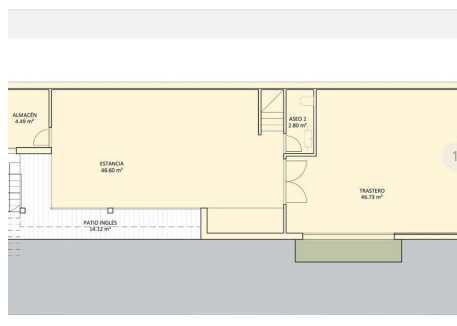
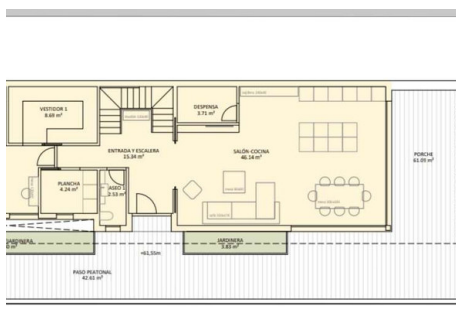


**ESTUDIO PREVIO**  
VIVIENDA UNIFAMILIAR AISLADA

parcela 350,72 m2  
altura edificable 8+1 (7m)  
edificabilidad máx 280,58 m2t

CUADRO DE SUPERFICIES Y EDIFICABILIDAD					
	planta	útiles	construida	porches y terrazas	total construido
SÓTANO	98,86	114,83	21,19	136,02	58,11
BAJA	104,99	121,28	16,10	137,38	121,28
PRIMERA	54,47	66,29	49,47	66,29	66,29
	258,32	302,40	86,76	339,69	245,68

edificabilidad restante 34,90 m2t



# BROMLEY ESTATES

## *Marbella*

