

PENTHOUSE DUPLEX 2 BEDROOMS 2 BATHROOMS IN PUERTO BANÚS

📍 Puerto Banús

REF# R5041645 €870,000

BEDS

2

BATHS

2

BUILT

113 m²

PLOT

62 m²

TERRACE

51 m²

Discover this beautifully renovated duplex penthouse perfectly positioned in the vibrant heart of Puerto Banús, boasting spectacular views directly over the iconic marina.

Flooded with natural light and designed with an open-plan concept, the spacious interior seamlessly blends modern elegance with coastal charm. The main floor features a stylish, fully fitted kitchen and bright living area that opens onto a generous terrace — the ideal spot to relax and take in the lively marina atmosphere. This level also includes a comfortable bedroom and a contemporary bathroom.

Upstairs, the second bedroom enjoys access to a private bathroom and opens out onto an expansive rooftop terrace, offering breathtaking panoramic views of the marina and the sparkling Mediterranean Sea — perfect for sunbathing, entertaining, or simply soaking in the scenery.

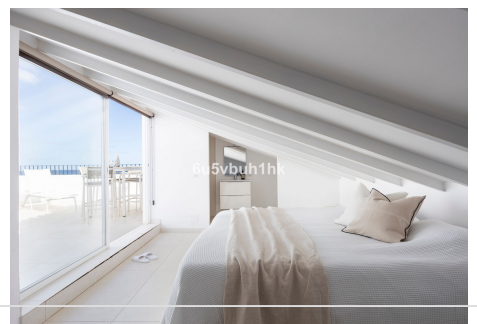
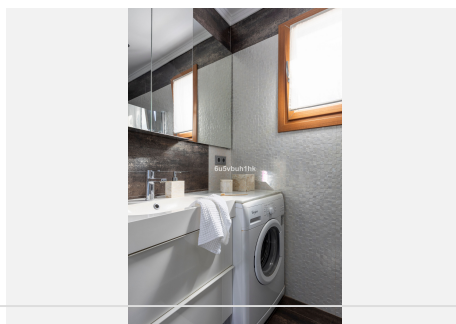
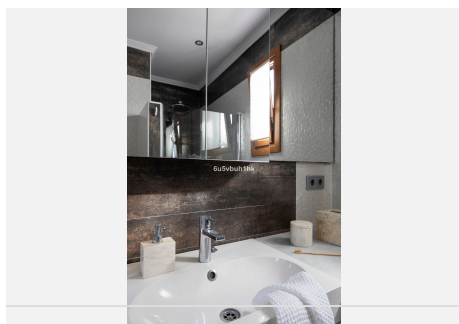
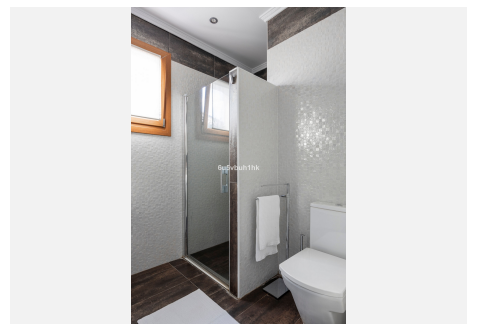
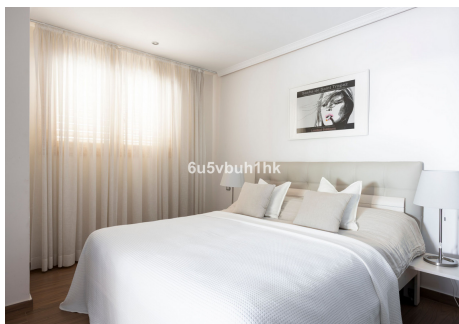
BROMLEY ESTATES

Marbella

This unbeatable location is not only ideal for enjoying unforgettable holidays but also represents a smart investment, with excellent rental potential throughout the year.

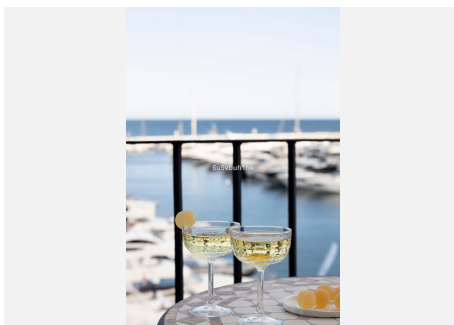
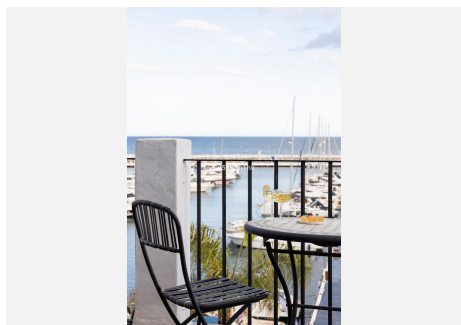
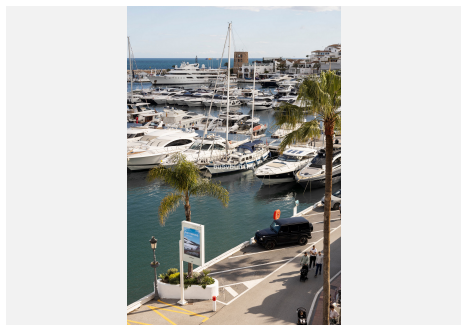
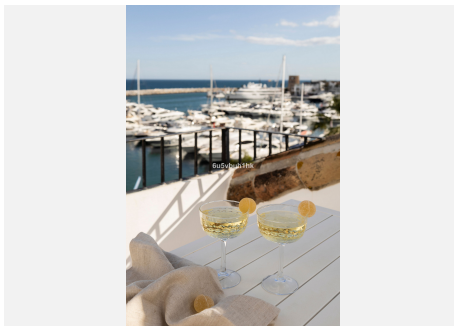
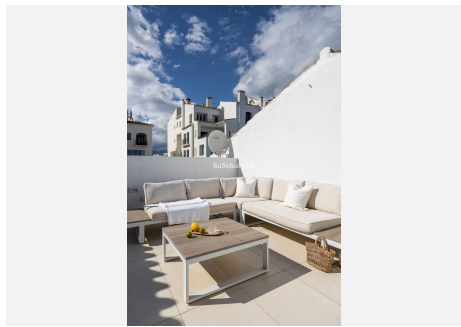
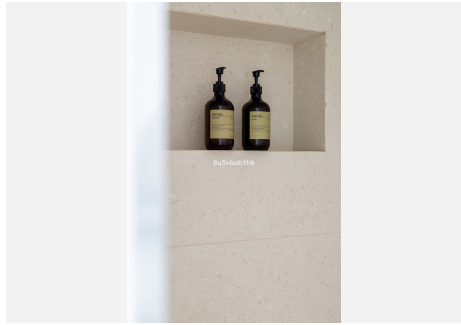
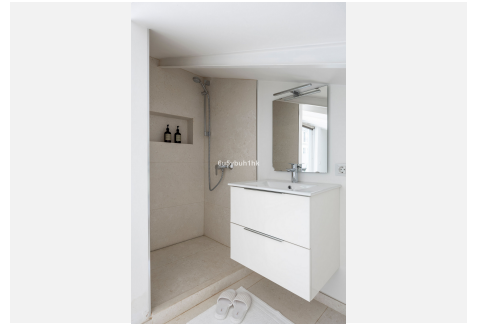
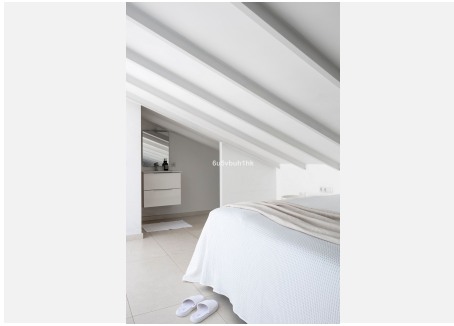
Sold fully furnished and ready to move into, this is a turnkey opportunity to own a piece of paradise. Additionally, the building will soon be enhanced with the installation of a lift, adding further value and convenience.

Don't miss the chance to own this extraordinary property in one of Marbella's most prestigious locations.



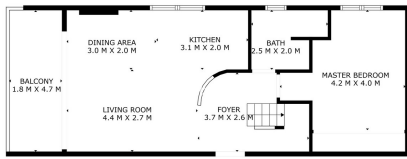
BROMLEY ESTATES

Marbella

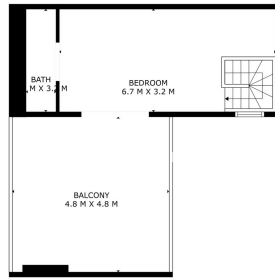


BROMLEY ESTATES

Marbella



SIZES ARE APPROXIMATE, ACTUAL MAY VARY



SIZES ARE APPROXIMATE, ACTUAL MAY VARY