



## PENTHOUSE 2 BEDROOMS 2 BATHROOMS IN NEW GOLDEN MILE

📍 New Golden Mile

REF# R5047696 €580,000

BEDS

2

BATHS

2

BUILT

70 m<sup>2</sup>

TERRACE

48 m<sup>2</sup>

Glamorous Artistic Reformed Beachside Penthouse – New Golden Mile, Benamara/Atalaya  
Discover coastal sophistication in this beautifully reimagined 2-bedroom, 2-bathroom penthouse on the New Golden Mile. Nestled within a quiet, gated, charming pueblo-style community in Benamara, this top-floor gem offers a rare blend of artistic design, modern comfort, and effortless beachside living. This penthouse is located just a few minutes' walk to Salduna Beach and only 10 minutes by car to the glitz and glamour of Puerto Banús.

This interior decorated and designed turnkey residence is perfect for the discerning buyer seeking immediate comfort and elegance. Every detail of this home has been thoughtfully renovated — from the stylish kitchen and sleek bathrooms to ambient lighting, upgraded electrics, and polished marble floors. The result is a bright and inspiring space that feels both fresh and timeless.

# BROMLEY ESTATES

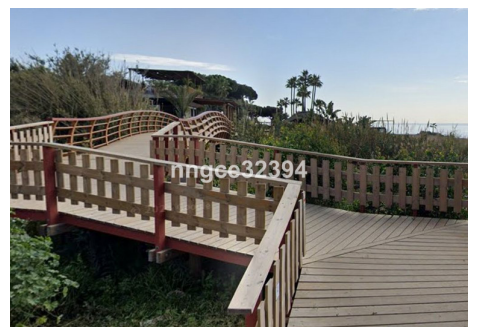
*Marbella*

The communal garden extends to a forest and beach zone, technically making this a beachfront urbanization. Enjoy seamless indoor-outdoor living with a spacious terrace perfect for sunbathing, dining al fresco, or simply soaking in the sea air. An upper-level solarium adds a private retreat surrounded by greenery — ideal for sunset cocktails or peaceful morning meditation.

Located between the Senator and Marriott Hotels, you're in the heart of one of the most sought-after areas along the coast. The generously sized bedrooms offer built-in wardrobes and calming natural light. The primary suite features an en suite bathroom for added privacy and ease.

Set within a lush community with mature gardens and a large communal pool, you're also steps from beachside restaurants, local cafés, and essential amenities.

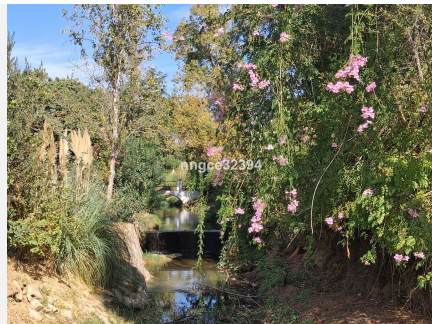
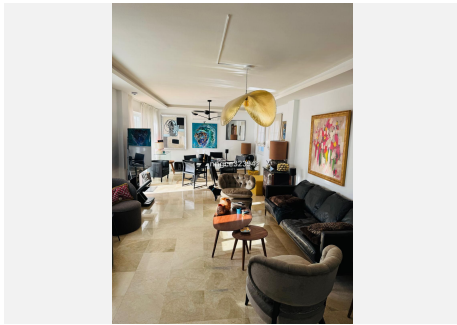
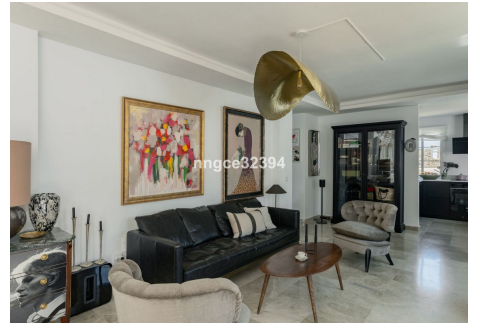
Whether you're seeking a chic holiday home, stylish full-time residence, or a smart investment in a high-demand area, this penthouse delivers on every level.





# BROMLEY ESTATES

*Marbella*





# BROMLEY ESTATES

*Marbella*

