



PENTHOUSE 3 BEDROOMS 2 BATHROOMS IN MARBELLA

📍 Marbella

REF# R5049337 €1,360,000

BEDS

3

BATHS

2

BUILT

115 m²

TERRACE

91 m²

Modern renovated apartment with spectacular terrace in a highly sought-after area of Marbella, 150m from the beach!

Discover this spectacular penthouse with elevator, located on the top floor of a building in one of Marbella's most desirable areas. Just 150 meters from the beach and a stone's throw from the historic center, this property enjoys an unbeatable location, surrounded by all essential daily services: supermarkets, restaurants, schools, health centers, public transportation, gyms, and shopping areas. An ideal option for those who want to fully enjoy Marbella's urban lifestyle.

The home has been completely renovated, including plumbing and electrical installations, standing out for its modern, functional design and high-quality materials. It has 3 spacious bedrooms, 2 elegant bathrooms with underfloor heating, a fully equipped kitchen, and a very bright and spacious living room, ideal for a family or entertaining guests. It is sold furnished as shown in the photos.

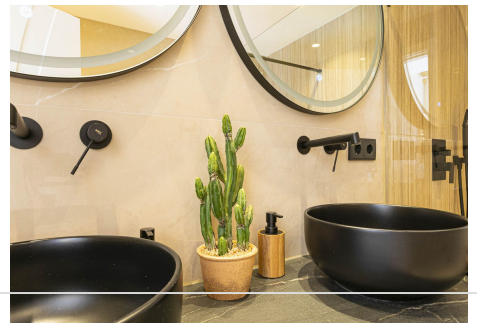
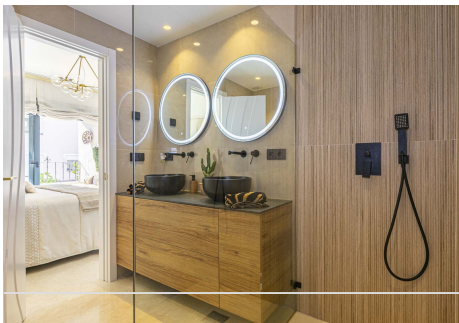
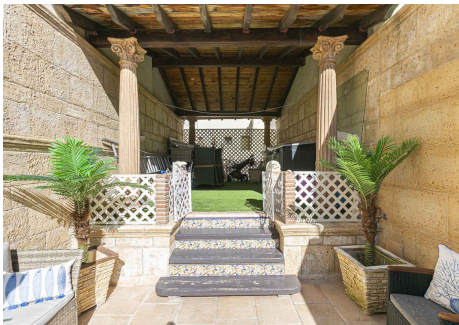
+34 952 939 460 · info@bromleyestatesmarbella.com Urbanizacion El Rosario, CN340, Km 188, Marbella, Malaga 29603

BROMLEY ESTATES

Marbella

The true gem of the apartment is its spectacular terrace, very spacious, cozy, and perfectly equipped to enjoy all year round. Additionally, there is the possibility to build a fourth bedroom and an additional bathroom in this outdoor area, adding even more value and versatility to the property.

Additional features include independent hot/cold air conditioning in each room, electric shutters, an installed alarm system, and an excellent closed garage included in the price. This property not only offers a modern and functional lifestyle but also the chance to enjoy everything that makes Marbella one of the most desirable destinations in the Mediterranean.



BROMLEY ESTATES

Marbella



BROMLEY ESTATES

Marbella

