



GROUND FLOOR APARTMENT 2 BEDROOMS 2 BATHROOMS IN BENAHAVIS

📍 Benahavis

REF# R5053348 €495,000

BEDS

2

BATHS

2

BUILT

100 m²

PLOT

105 m²

TERRACE

102 m²

Benatalaya ground-floor apartment with a private corner garden, very private, in a gated community with 24-hour security, in a very quiet and private area, belonging to Estepona, Costa del Sol.

The apartment consists of 2 bedrooms and 2 bathrooms, the master with an en-suite bathroom, bathtub and shower, both with electric underfloor heating. The apartment measures 98.95 m² and has a covered terrace plus a private garden of approximately 100sqm. The bedrooms have electric heaters. The fully equipped kitchen includes a utility room and an electric water heater. The apt. includes 2 garajes spaces and Storage room

The well-maintained complex with Mediterranean gardens has 4 swimming pools in total, one of which is heated, as well as a gym and 24-hour security.

BROMLEY ESTATES

Marbella

It is just a 5-minute drive from the town of Benahavis, where you can enjoy Mediterranean and international cuisine. It is close to the Atalaya golf course and within walking distance of Atalaya school and the Mercadona supermarket, making it ideal for family life.

Ground Floor Apartment, Benahavís, Costa del Sol.

2 Bedrooms, 2 Bathrooms, Built 98,95 m².

Setting : Mountain Pueblo, Close To Golf, Close To Town, Close To Schools, Close To Forest, Urbanisation.

Orientation : South.

Condition : Excellent.

Pool : Communal, Private, Indoor, Heated, Children`s Pool.

Climate Control : Air Conditioning, Hot A/C, Cold A/C, U/F Heating, U/F/H Bathrooms.

Views : Garden.

Features : Covered Terrace, Fitted Wardrobes, Private Terrace, Gym, Utility Room, Marble Flooring, Double Glazing.

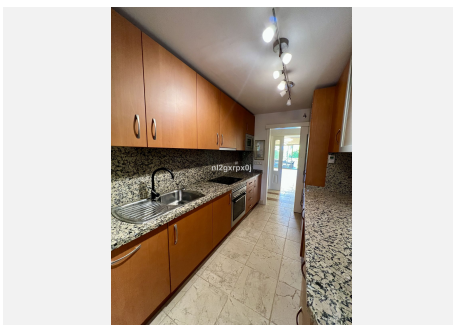
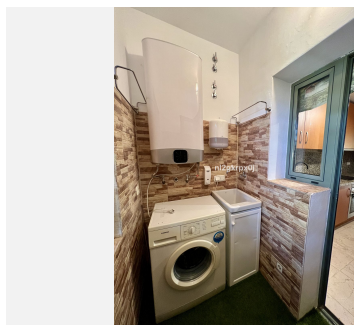
Kitchen : Fully Fitted.

Garden : Communal.

Security : Gated Complex, Electric Blinds, Entry Phone, Alarm System, 24 Hour Security.

Parking : Garage, More Than One.

Category : Golf, Holiday Homes.



BROMLEY ESTATES

Marbella



BROMLEY ESTATES

Marbella

