



## TOWNHOUSE 2 BEDROOMS 2 BATHROOMS IN BENALMADENA

📍 Benalmadena

REF# R5070319 €840,000

BEDS

2

BATHS

2

BUILT

120 m<sup>2</sup>

PLOT

701 m<sup>2</sup>

TERRACE

9 m<sup>2</sup>

Discover your new home in Torremuelle, Benalmádena! This charming detached villa offers a built area of 120sqm on a 701sqm plot, where tranquility and sea views combine to create an idyllic setting. With two spacious bedrooms and a bright living-dining room with a fireplace and large windows, this space is perfect for enjoying unforgettable moments. The rustic-style kitchen and two bathrooms add a touch of comfort to daily life.

The exterior is a true oasis, with a well-kept garden and a private pool that invite you to relax under the Costa del Sol sun. It also has terraces ideal for enjoying the sea breeze or sharing with friends and family. The location is unbeatable, in a quiet and exclusive residential area, just 500 meters from the beach and close to schools, supermarkets, various leisure and dining options.

This villa is not only a home, but also an investment opportunity. With a technical study completed that allows for the expansion of the home up to 180 m<sup>2</sup> per level, you'll have the opportunity to customize it to

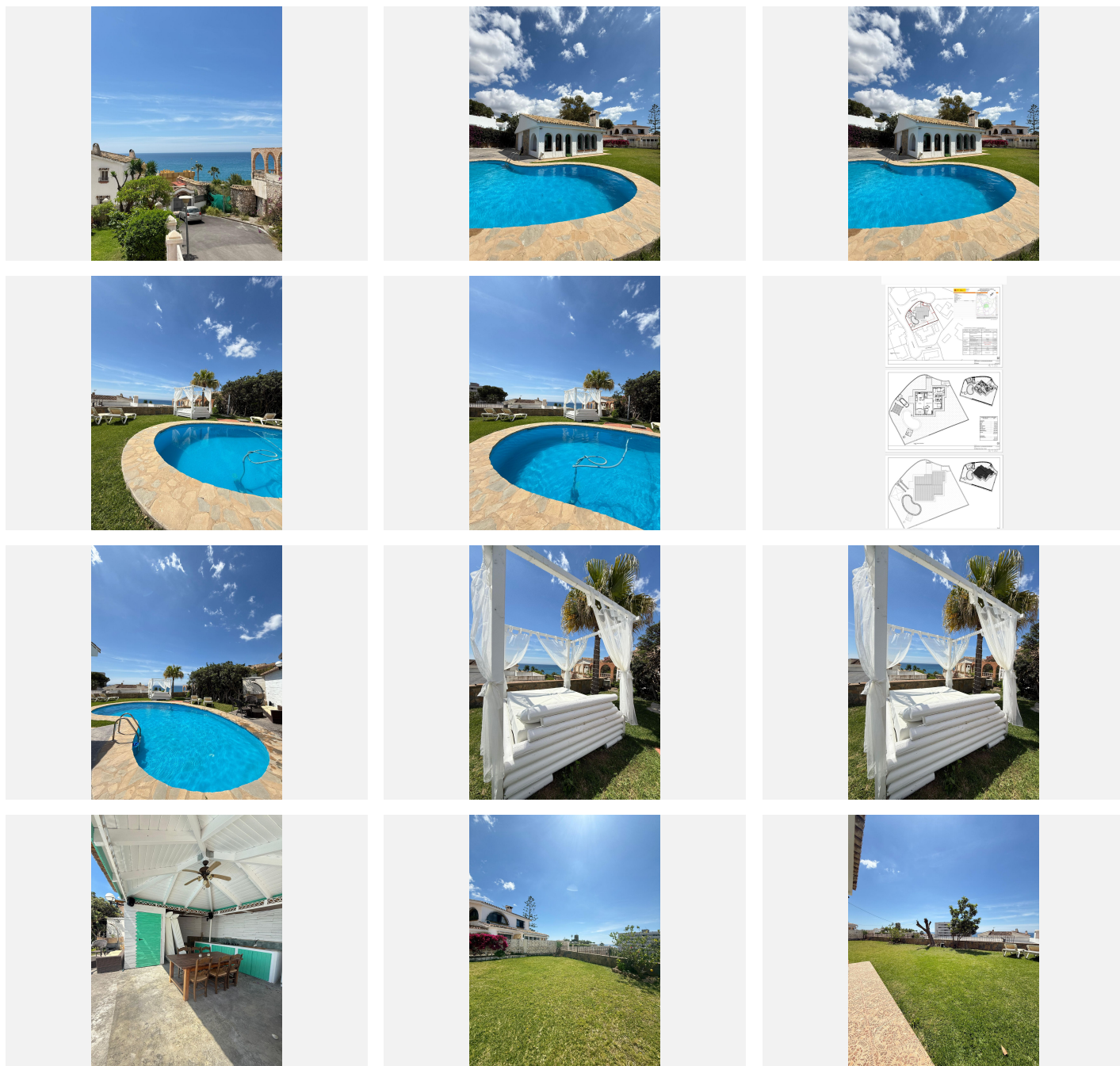
+34 952 939 460 · [info@bromleyestatesmarbella.com](mailto:info@bromleyestatesmarbella.com) Urbanizacion El Rosario, CN340, Km 188, Marbella, Malaga 29603

# BROMLEY ESTATES

*Marbella*

your liking. Four architectural sketches have already been developed, making the process easier. Excellent transport links, with the national highway (N-340) and the Torremuelle train station just 850 meters away, make getting around the area very convenient.

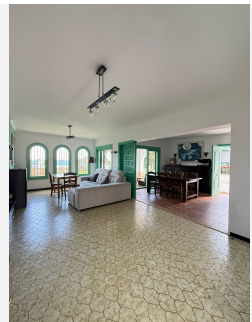
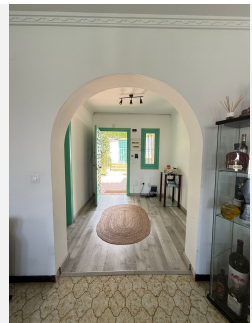
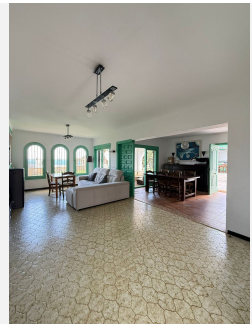
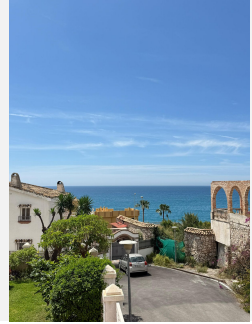
Don't miss the opportunity to acquire this magnificent villa in a healthy and peaceful setting, ideal for enjoying the Costa del Sol climate. Contact us for more information and come see it!





# BROMLEY ESTATES

*Marbella*



# BROMLEY ESTATES

## *Marbella*

