



TOWNHOUSE 5 BEDROOMS 4 BATHROOMS IN ARTOLA

📍 Artola

REF# R5072410 €595,000

BEDS

5

BATHS

4

BUILT

178 m²

TERRACE

50 m²

Opportunity! Prime location in the sought-after Artola Alta area, directly overlooking Cabopino Golf and only a 12-minute walk (approx. 900 meters) to the beautiful Cabopino's Beach and the Cabopino Marina.

This townhouse is ideal for families, golf lovers, or those seeking a high-end holiday home in one of Marbella's most tranquil and green areas, just steps from the beach.

Private Garage – With direct access to the property.

Peaceful Yet Connected – Quiet residential setting with easy access to the AP-7, international schools, public transport, and all amenities.

Artola Alta

Why choose the area?

You have a winning combination: sea, golf, nature and comfort in a premium location.

Perfect both for year-round living and exclusive holidays.

+34 952 939 460 · info@bromleyestatesmarbella.com Urbanizacion El Rosario, CN340, Km 188, Marbella, Malaga 29603

BROMLEY ESTATES

Marbella

Authentic ambience without the urbanistic excesses of other areas of the Costa del Sol.

Cabopino Marina

Very close to Artola Alta, with approximately 169 moorings and a pleasant area with bars, restaurants and nautical activities.

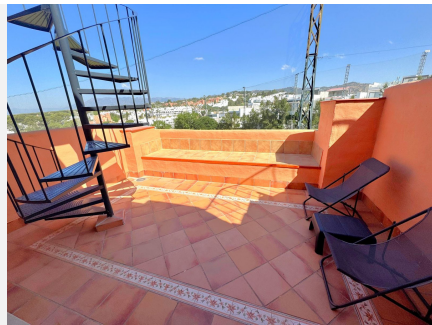
It offers a quiet and pleasant atmosphere, ideal both during the day and at sunset.

Cabopino Golf

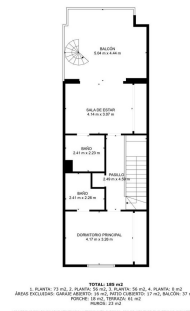
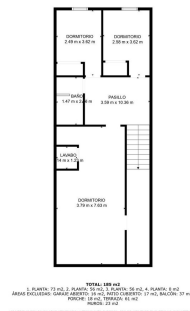
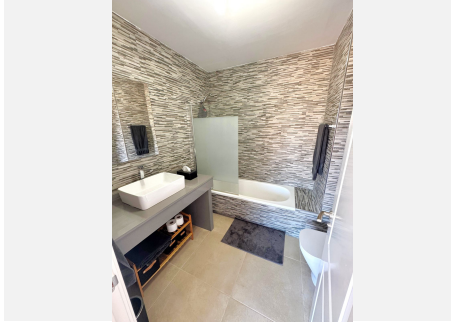
18-hole golf club designed by Juan Ligués Creus, combining par-3, par-4 and par-5 with lakes, curious pine trees and spectacular views of the Mediterranean Sea.

The third hole is particularly celebrated: a par-4 from an elevated tee at a height of 80 m, protected by bunkers, with breathtaking views.

Located in Artola Alta, just a few minutes' walk from the beach and the port, it offers a well-kept environment and a welcoming clubhouse.



BROMLEY ESTATES
Marbella



BROMLEY ESTATES

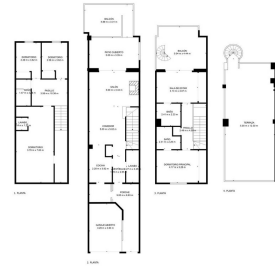
Marbella



TERRAZA
6.20 x 12.00 m.
TOTAL 188 m²
S. DORMITORIO 17 m², S. BAÑO 7 m², S. DORMITORIO 16 m², S. BAÑO 6 m²
ÁREAS EXTERIORES: GARAJE 20 m², S. BAÑO 10 m², S. DORMITORIO 17 m², S. BAÑO 6 m²
PISCINA 12 m²
ALCANTARILLO 22 m²



TERRAZA
6.20 x 12.00 m.
TOTAL 188 m²
S. DORMITORIO 17 m², S. BAÑO 7 m², S. DORMITORIO 16 m², S. BAÑO 6 m²
ÁREAS EXTERIORES: GARAJE 20 m², S. BAÑO 10 m², S. DORMITORIO 17 m², S. BAÑO 6 m²
PISCINA 12 m²
ALCANTARILLO 22 m²



TERRAZA
6.20 x 12.00 m.
TOTAL 188 m²
S. DORMITORIO 17 m², S. BAÑO 7 m², S. DORMITORIO 16 m², S. BAÑO 6 m²
ÁREAS EXTERIORES: GARAJE 20 m², S. BAÑO 10 m², S. DORMITORIO 17 m², S. BAÑO 6 m²
PISCINA 12 m²
ALCANTARILLO 22 m²