



MIDDLE FLOOR APARTMENT 2 BEDROOMS 2 BATHROOMS IN BENAHAVIS

📍 Benahavis

REF# R5074099 €320,000

BEDS

2

BATHS

2

BUILT

79 m²

TERRACE

13 m²

The perfect front-line golf rental investment and holiday home.

Fully furnished, 2 bed 2 bath first floor apartment overlooking La Concha mountain and El Paraíso Golf.

Owners can enjoy access to multiple swimming pools, lush gardens, a co-working space, and a professionally equipped gym.

The resort's rental management provides effortless ownership of a Marbella property, allowing for personal enjoyment of a fully serviced resort and the potential for consistent rental income.

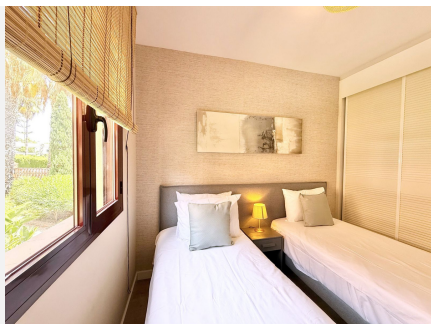
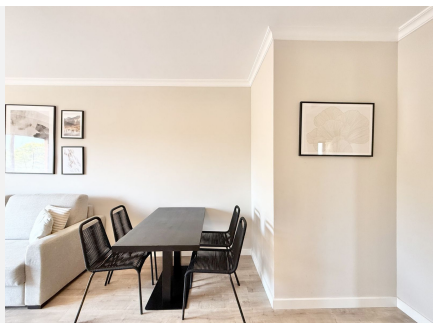
Close to Villa Padierna Golf, Tramores Golf, Atalaya Golf, and Guadalmina Golf, this apartment is at the intersection of Marbella, Estepona, and Benahavís. The prime location ensures proximity to fantastic beaches, golf courses and all the amazing activities available on the coast.

BROMLEY ESTATES

Marbella

Underground Parking & Storage Room optional

We are pleased to announce a small selection of available units, prices ranging from 245.000 € to 449.000 €. Contact us today for more information



BROMLEY ESTATES

Marbella

