

## HOUSE 5 BEDROOMS 4 BATHROOMS IN ALHAURIN DE LA TORRE

📍 Alhaurin de la Torre

REF# R5081368 €795,000

BEDS

5

BATHS

4

BUILT

537 m<sup>2</sup>

PLOT

1080 m<sup>2</sup>

Located in one of Málaga's most exclusive hillside communities, this distinctive villa is an architectural statement, offering over 500 m<sup>2</sup> build on an elevated 1,000 m<sup>2</sup> plot.

The majestic entrance leads into a stunning double-height hall that immediately sets the tone for the home's distinctive character. It's a bright, modern home with clean lines and subtle oriental influences. The layout can easily be adapted to make two independent residences, each with its own private entrance.

Features include:

A fully fitted, high-end kitchen filled with natural light

3 sunny terraces for dining and relaxing

A peaceful Zen garden and generous green areas within the property's plot

+34 952 939 460 · [info@bromleyestatesmarbella.com](mailto:info@bromleyestatesmarbella.com) Urbanizacion El Rosario, CN340, Km 188, Marbella, Malaga 29603

# BROMLEY ESTATES

## *Marbella*

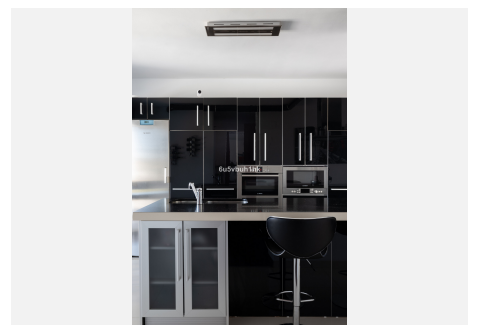
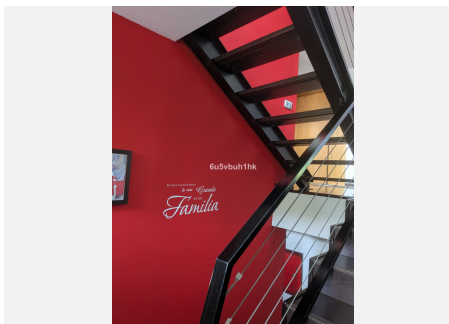
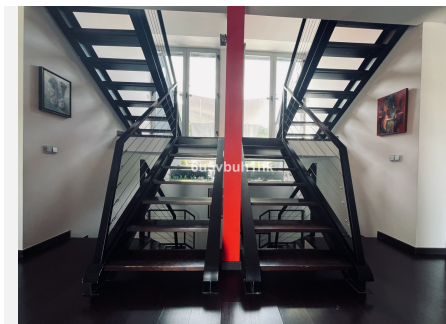
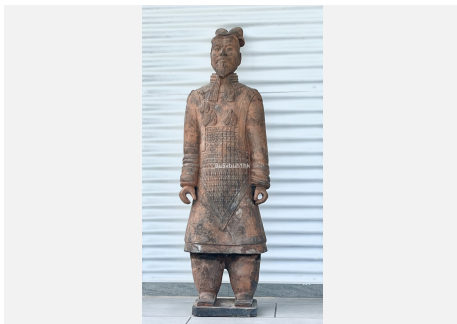
A 25-metre infinity pool with breathtaking views

Garage for up to 5 cars, plus outside parking for 6 more

The lower level includes a pre-installation for a spa, with a window into the pool. There's also space for a cinema, games room, or bar, and even a private squash court. A 3D design is available to help visualise the possibilities.

The villa is just 15 minutes from Málaga airport and 20 minutes from the coast and city centre, with access to a nearby social club offering padel and pickleball courts.

A rare opportunity combining design, versatility, and location on the Costa del Sol.

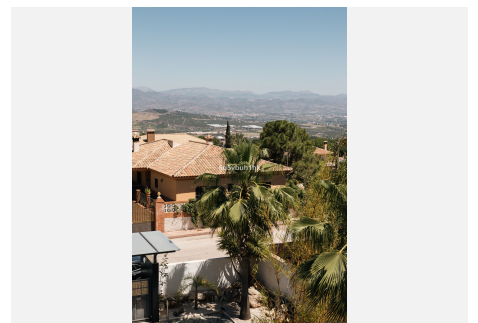
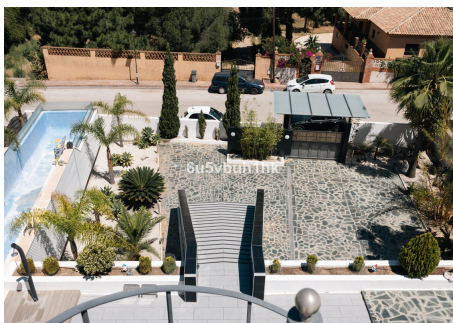
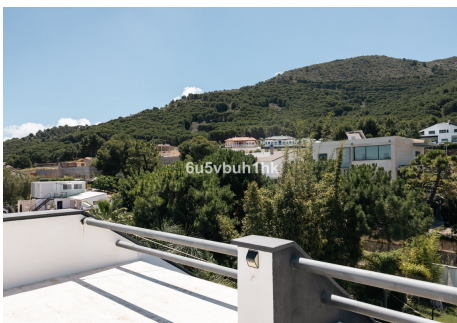
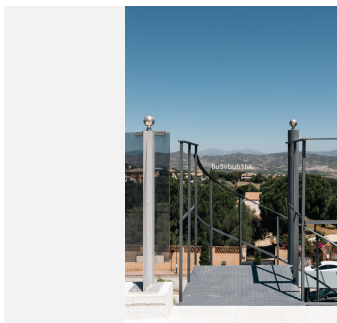
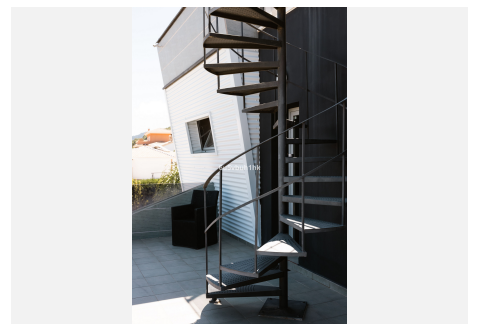
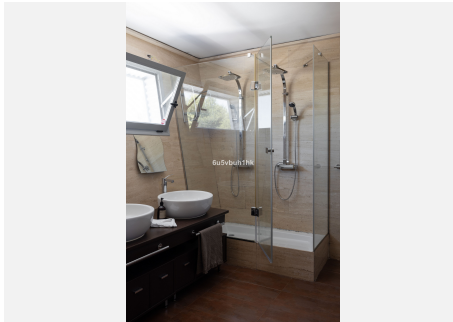
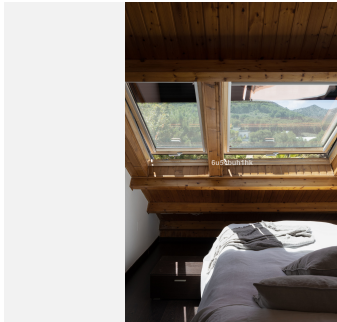
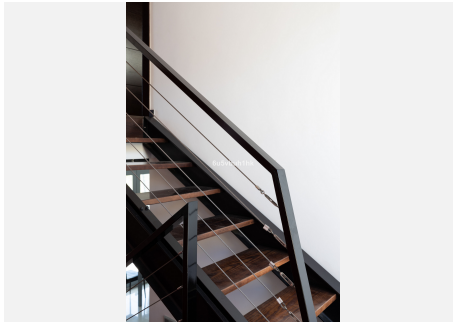
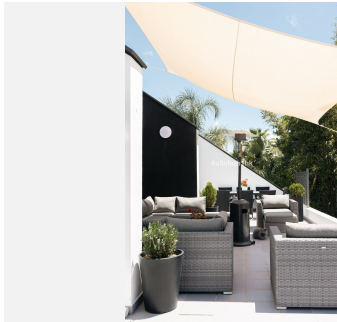


+34 952 939 460 • [info@bromleyestatesmarbella.com](mailto:info@bromleyestatesmarbella.com) • Urbanización El Rosario, CN346, Km 168, Marbella, Málaga 29603



# BROMLEY ESTATES

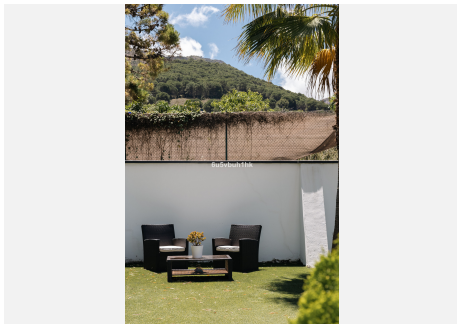
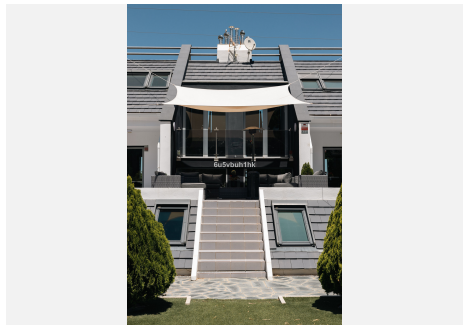
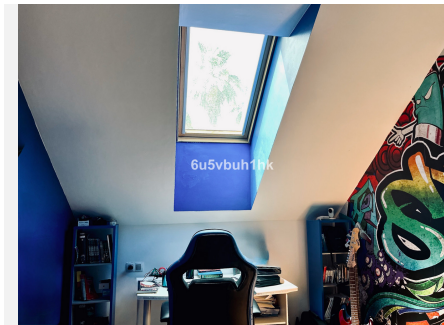
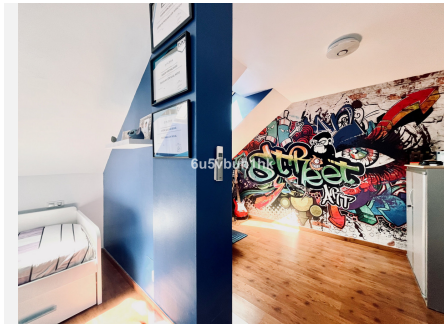
*Marbella*





# BROMLEY ESTATES

*Marbella*





# BROMLEY ESTATES

## *Marbella*

