



PENTHOUSE 2 BEDROOMS 2 BATHROOMS IN LA MAIRENA

📍 La Mairena

REF# R5084263 €349,000

BEDS

2

BATHS

2

BUILT

95 m²

TERRACE

20 m²

Penthouse with Breathtaking Views in the Heart of Nature – El Soto de La Mairena

Nestled in one of the most serene and green corners of the Costa del Sol, this exquisite penthouse in El Soto de La Mairena is a sanctuary for those who long for peace, nature, and panoramic beauty.

Surrounded by lush UNESCO-protected landscapes and ancient trees, the home offers sweeping views of the Sierra Nevada mountains, the glistening Mediterranean Sea, and the picturesque white village of Mijas. On clear days, you can even see planes landing in Málaga—far enough to dream, close enough to stay connected.

Step into a world of stillness and natural charm. The urbanization is a haven of manicured Spanish gardens where birdsong replaces noise, and neighbors gather for quiet conversations or peaceful walks. Life here moves to the rhythm of nature.

+34 952 939 460 · info@bromleyestatesmarbella.com Urbanizacion El Rosario, CN340, Km 188, Marbella, Malaga 29603

BROMLEY ESTATES

Marbella

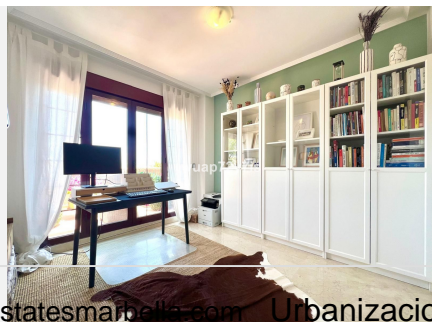
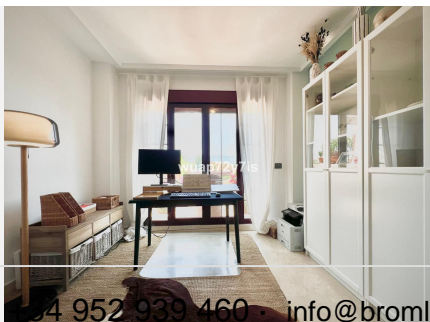
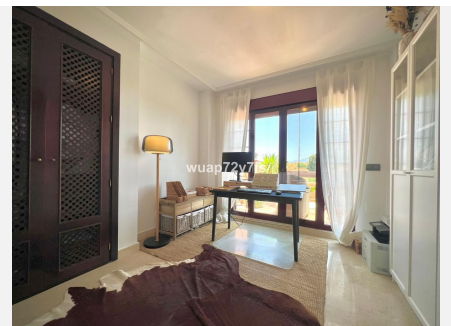
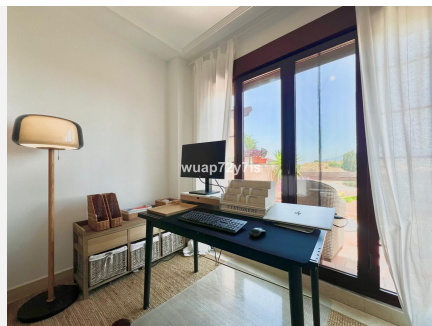
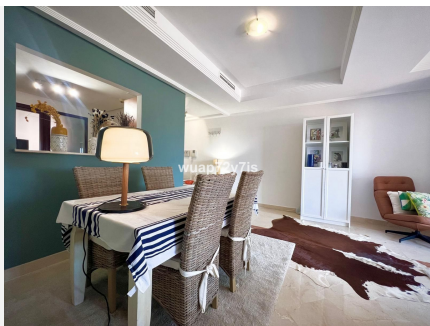
The penthouse features two bright bedrooms and two bathrooms (including a master en suite), all in impeccable condition. The thoughtfully designed kitchen is fully equipped and includes a separate utility room for laundry and storage. The spacious living area opens directly onto a private terrace—perfect for watching the sunrise, reading a book, or simply listening to the wind in the trees.

Wake up each morning in the master bedroom to enchanting views of the sea and the hills of Mijas. The second bedroom overlooks the greenery of the urbanization, ideal for guests or a peaceful home office.

El Soto de La Mairena offers exceptional resident amenities: free access to a 9-hole golf course, several outdoor pools, tennis and padel courts, a gym, sauna, indoor jacuzzi, table tennis area, and a friendly clubhouse where neighbors become friends. The on-site restaurant is the social heart of the community.

And yet, despite this idyllic mountain retreat, you're just 10 minutes from the coast and close to excellent international schools, including the prestigious German School of Málaga.

This penthouse is more than a home—it's an invitation to slow down, reconnect with nature, and experience everyday life as a quiet luxury. Whether as a permanent residence or a tranquil holiday getaway, it offers the perfect balance of comfort, community, and natural beauty.



BROMLEY ESTATES

Marbella

