



MIDDLE FLOOR APARTMENT 2 BEDROOMS 2 BATHROOMS IN MANILVA

📍 Manilva

REF# R5126191 €320,000

BEDS

2

BATHS

2

BUILT

126 m²

TERRACE

20 m²

The house is completely exterior.

It has 146 square meters, and consists of:

- Living room, designed to have 2 environments, with XXL sofa to enjoy the 65 inch LG QNED TV.
- Kitchen and laundry room fully equipped with appliances with Energy Efficiency A.
- Very spacious bedroom with double bed and custom wardrobe, and 55 inch LG QNED TV.
- Main bathroom with hydromassage bathtub.
- Youth bedroom with 1.35 m bed, with access to an outdoor balcony.
- Terrace with the best views of Sabinillas that includes an extendable table to enjoy the incredible sunsets.
- Parking space + Storage room
- Common areas: including 4 community pools and paddle tennis court.
- Extras: Electric blinds, Built-in wardrobes, Flex folding sofas, Air conditioning throughout the house, Double glazed windows, Sliding aluminum closures, Custom curtains, Lights with intensity changes,

BROMLEY ESTATES

Marbella

Drawers, ceiling fans in the bedrooms, electric fireplace,...

It is available to move into now as it has:

- Electricity, water and WiFi 6G installation
- Built-in TVs to avoid unnecessary cables.
- Alarm installed.

Middle Floor Apartment, Manilva, Costa del Sol.

2 Bedrooms, 2 Bathrooms, Built 126 m², Terrace 20 m².

Setting : Close To Town, Close To Schools, Urbanisation.

Orientation : South.

Condition : Excellent.

Pool : Communal, Children`s Pool.

Climate Control : Air Conditioning, Hot A/C, Cold A/C.

Views : Sea, Mountain.

Features : Covered Terrace, Lift, Fitted Wardrobes, Private Terrace, WiFi, Storage Room, Utility Room, Ensuite Bathroom, Access for people with reduced mobility, Double Glazing.

Furniture : Fully Furnished.

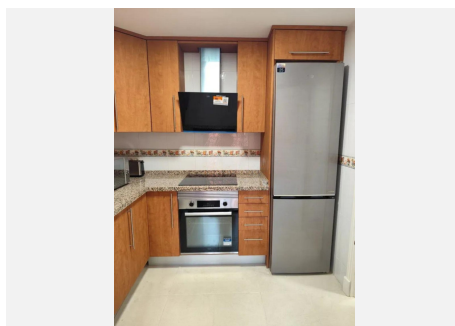
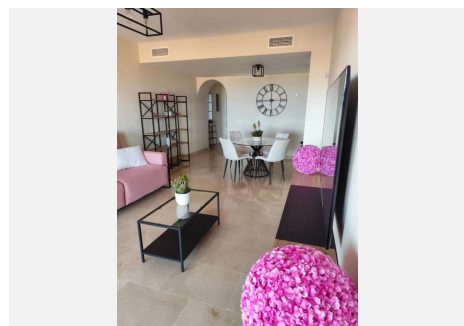
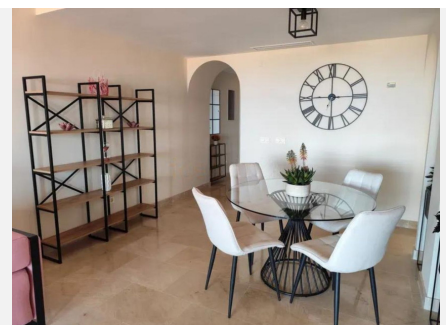
Kitchen : Fully Fitted.

Garden : Communal.

Security : Gated Complex, Electric Blinds, 24 Hour Security.

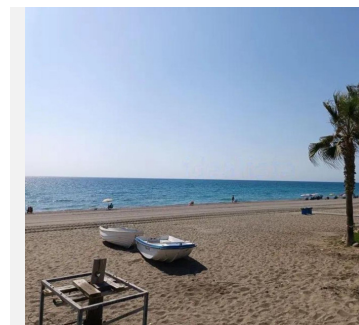
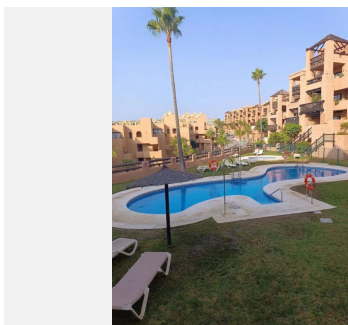
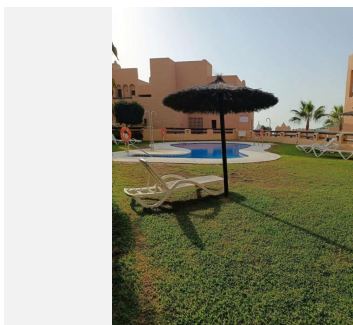
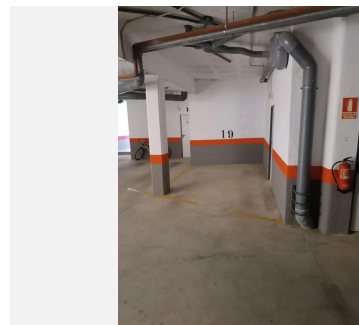
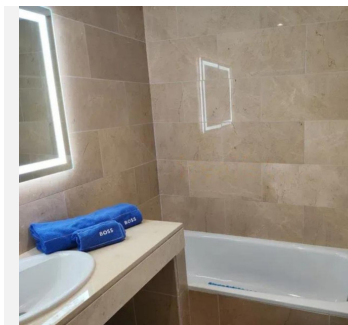
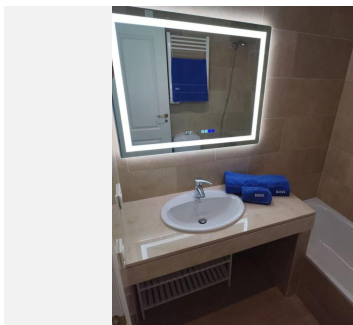
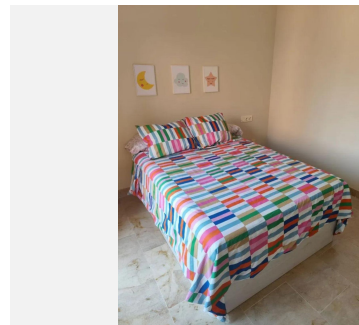
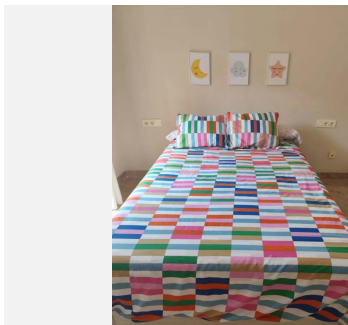
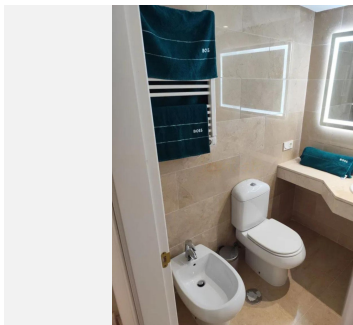
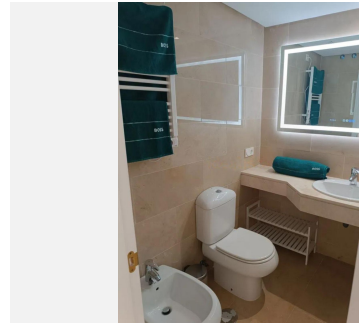
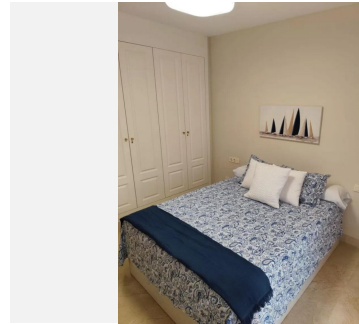
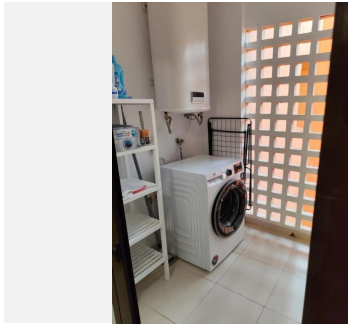
Parking : Underground, Garage, Covered, Private.

Category : Resale.



BROMLEY ESTATES

Marbella



BROMLEY ESTATES

Marbella

