



MIDDLE FLOOR APARTMENT 3 BEDROOMS 2 BATHROOMS IN FUENGIROLA

📍 Fuengirola

REF# R5129938 €760,000

BEDS

3

BATHS

2

BUILT

114 m²

TERRACE

33 m²

An exceptional, modern apartment finished to a high standard, located on the 4th floor of a newly built, exclusive residential development.

Property Details:

3 spacious bedrooms

2 modern bathrooms

2 parking spaces in an underground garage (equipped with a private EV charging station)

Storage room – additional space for your belongings

Floor: 4 (with elevator access)

BROMLEY ESTATES

Marbella

Exclusive Amenities for Residents:

The development offers a wide range of top-class facilities, including:

24/7 security and monitoring

Private sports club with swimming pools, tennis courts, and a full-service SPA

Tennis academy by Alejandro Davidovich Fokina

Indoor heated pools, sauna, jacuzzi, Turkish bath, and massage room

Private beach bar

Free shuttle service to the beach

Coworking space for remote workers

Landscaped courtyards and relaxation areas

Children's playground

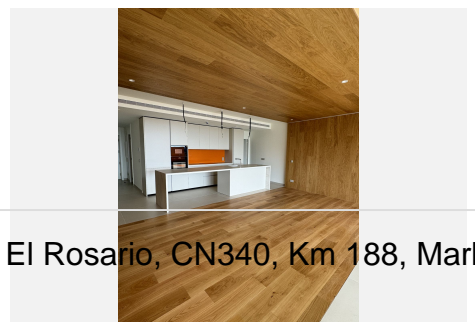
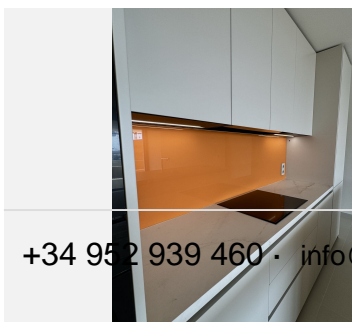
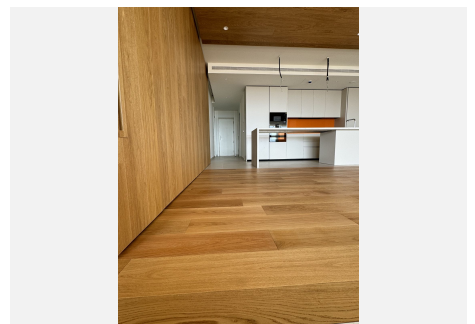
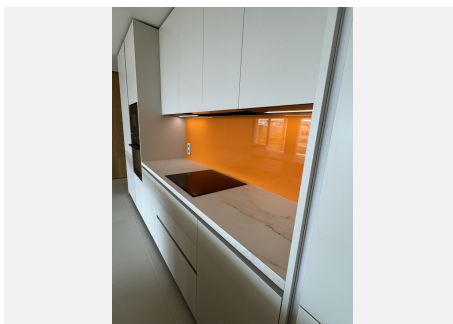
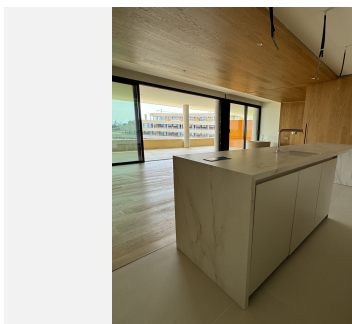
On-site convenience store and service points

Location:

The apartment is located in a peaceful, green neighborhood, situated on a hill, which ensures complete privacy and stunning views. Despite the tranquil setting, the area is well-connected — close to public transport, shops, restaurants, and recreational areas. The beach is just 1 km away.

The price includes two underground parking spaces and a storage unit.

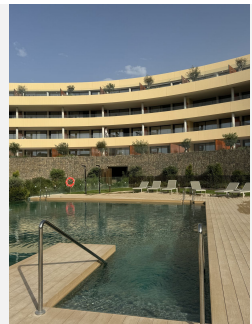
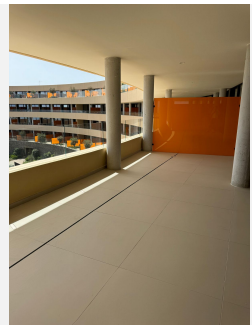
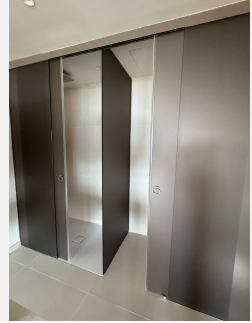
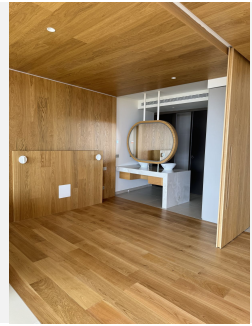
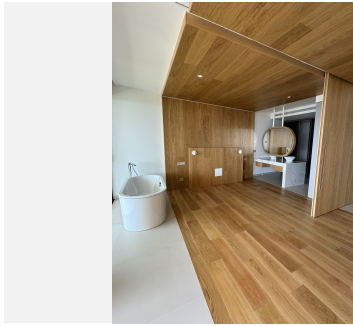
The apartment has been finished with attention to detail, using the highest quality materials throughout.



+34 952 939 460 • info@bromleyestatesmarbella.com Urbanizacion El Rosario, CN340, Km 188, Marbella, Malaga 29603

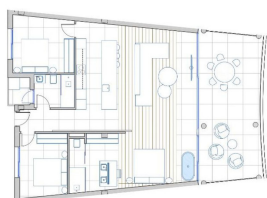
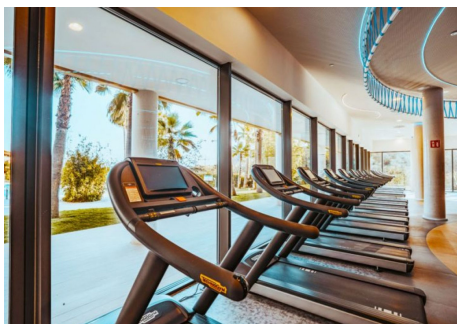
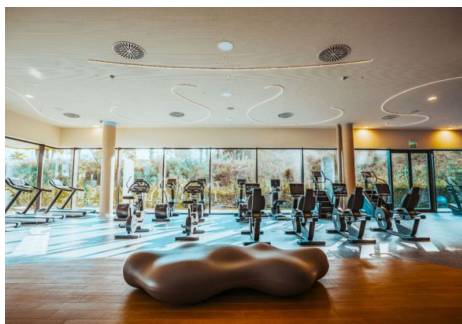
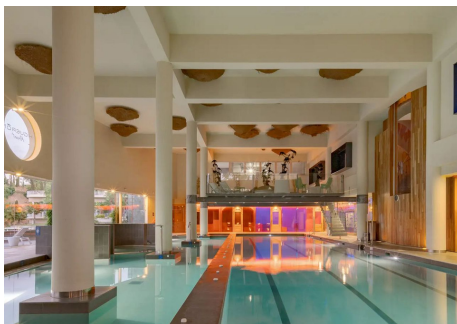
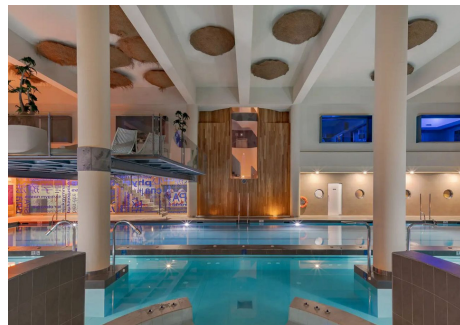
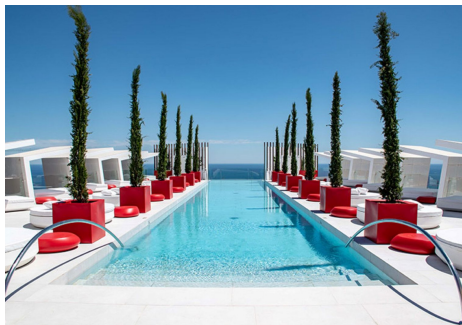
BROMLEY ESTATES

Marbella



BROMLEY ESTATES

Marbella



0.415
MÁS DE 100 M² DE SUPERFICIE
MÁS DE 100 M² DE SUPERFICIE
SUPERFICIE TOTAL: 1000 M²