



PENTHOUSE 2 BEDROOMS 2 BATHROOMS IN MANILVA

📍 Manilva

REF# R5136499 €290,000

BEDS

2

BATHS

2

BUILT

100 m²

TERRACE

21 m²

Penthouse with Panoramic Sea Views!

Between Sea and Mountains

Nestled in a quiet valley in Manilva, this penthouse offers breathtaking views of the Mediterranean, Gibraltar, and the Moroccan coastline. It combines tranquility with proximity to the beaches and Sotogrande. The architecture blends perfectly into its natural surroundings, making it an ideal choice for an elegant holiday home or a sunny year-round residence.

Layout & Features

Spacious living-dining room opening onto a generous terrace with sea views

Fully fitted kitchen with brand-new appliances

2 bedrooms with built-in wardrobes

2 bathrooms, including one en-suite in the master bedroom

Marble flooring

BROMLEY ESTATES

Marbella

Newly installed ducted air conditioning (hot/cold)

Residence Highlights

Boutique complex with just 3 low-rise buildings surrounded by large green areas

Swimming pool with stunning sea views for a relaxed Mediterranean lifestyle

Parking space and storage room included in the price

Location & Amenities

Less than 1 km from the Mediterranean beaches

Only 3 minutes from Sotogrande (marina, restaurants, services)

Nearby supermarkets: Lidl, Mercadona, Supercor, plus schools and restaurants

Excellent connections with surrounding towns of the Costa del Sol

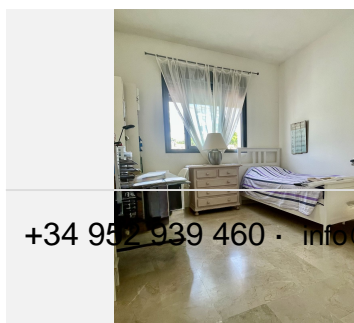
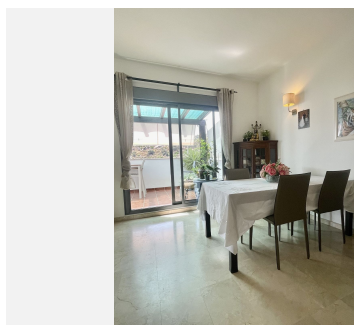
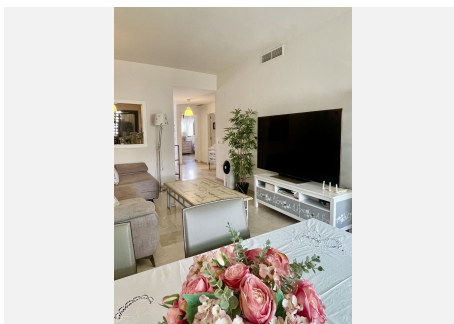
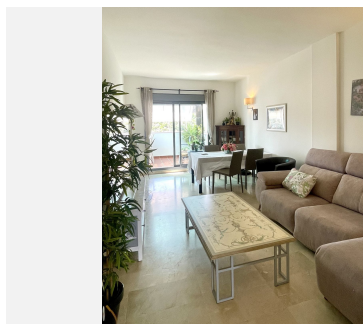
Key Information

Type: Penthouse – 2 bedrooms | 2 bathrooms

Parking & Storage: 1 parking space + 1 storage room included

Why We Love It

A top-floor home flooded with natural light, a terrace where the sea is always in view, and a peaceful residence – everything you need to fully enjoy life on the Costa del Sol.



+34 952 939 460 • info@bromleyestatesmarbella.com Urbanizacion El Rosario, CN340, Km 188, Marbella, Malaga 29003

BROMLEY ESTATES

Marbella

