



HOUSE 3 BEDROOMS 4 BATHROOMS IN ESTEPONA

📍 Estepona

REF# R5139001 €1,395,000

BEDS

3

BATHS

4

BUILT

220 m²

TERRACE

334 m²

Modern Luxury Villa with Panoramic Golf and Sea Views in Estepona!

This modern, newly built villa at Valle Romano Golf in Estepona offers outstanding panoramic views of both the golf course and the Mediterranean Sea.

Valle Romano is a sought-after area on the Costa del Sol, known for its golf course, Valle Romano Golf Resort, and is popular among golfers, holidaymakers, and those seeking a peaceful year-round residence close to both golf and the beach.

The house is designed with a focus on light, space, and comfort, featuring a private pool and a rooftop terrace with spectacular views. On the entrance level, you'll find an open-plan kitchen and dining area opening onto large windows and a fantastic terrace, perfect for relaxation or social gatherings. One floor down is a stylish and cozy TV room, while the upper floor accommodates three bedrooms with three bathrooms and a generous balcony with magical views. The villa's rooftop terrace elevates the experience even further with even more impressive vistas.

+34 952 939 460 · info@bromleyestatesmarbella.com Urbanizacion El Rosario, CN340, Km 188, Marbella, Malaga 29603

BROMLEY ESTATES

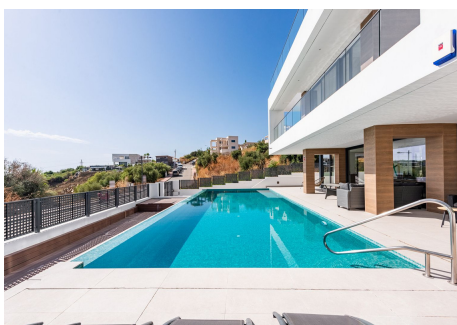
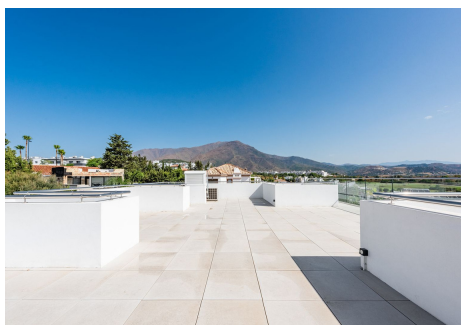
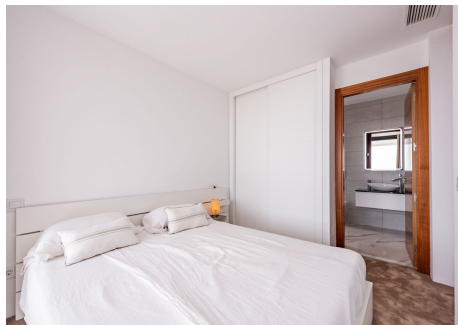
Marbella

Private parking is conveniently located at the side of the house, and amenities such as a supermarket, pharmacy, and restaurants are only 3 km away, while Estepona's lively marina area and new promenade are just 5 km away. This villa combines modern luxury, breathtaking views, and an unbeatable location – a dream for anyone wishing to enjoy the Costa del Sol lifestyle all year round.

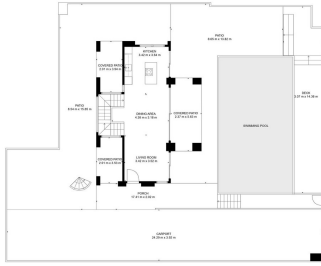
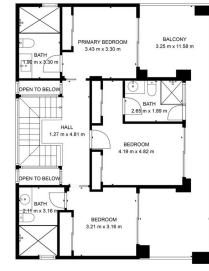


BROMLEY ESTATES

Marbella

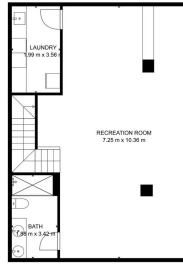


BROMLEY ESTATES
Marbella



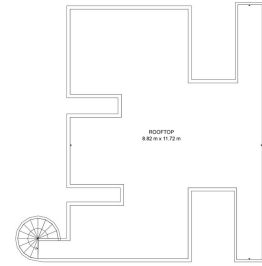
TOTAL: 187 sq ft
 BELOW GROUND: 75 sq ft, FLOOR 2: 42 sq ft, FLOOR 3: 70 sq ft, FLOOR 4: 0 sq ft
 EXCLUDED AREAS: CARPORT: 75 sq ft, BALCONY: 2 sq ft, COVERED PATIO: 28 sq ft,
 PORCH: 27 sq ft, DECK: 33 sq ft, OPEN TO BELOW: 2 sq ft,
 BALCONY: 27 sq ft, RECEPTOR: 83 sq ft
 NULLS: 28 sq ft

FLOOR PLAN CREATED BY CURLEIGH ASSOCIATES INC. DESIGNER'S DESIGN. DESIGNER'S DESIGN IS BASED ON BUT NOT GUARANTEED.



TOTAL: 187 sq2
 MILLION GROUND: 75 sq2, FLOOR 2: 42 sq2, FLOOR 3: 70 sq2, FLOOR 4: 0 sq2
 EXCLUDED AREA: 100 sq2, CORPLOT 100 sq2, 1.36 mi2, COVERED PAVED: 38 sq2,
 ROBOH: 27 sq2, DECK: 53 sq2, OPEN TO BELOW: 2 sq2,
 BALCONY: 27 sq2, RECEPT: 83 sq2
 WALLS: 19 sq2

FLUOR RUN CREATED BY CUBESIDE ARE MEASUREMENTS SEENED POLICY RELATED BUT NOT GUARANTEED



TOTAL: 187 m2
 BELOW GROUND: 75 m2, FLOOR 1: 42 m2, FLOOR 3: 70 m2, FLOOR 4: 8 m2
 EXCLUDED AREAS: CARPORT: 135 m2, CONCRETE PATIO: 38 m2
 POBCH: 27 m2, DECK: 33 m2, GYM FOR BELOW: 2 m2
 BALCONY: 27 m2, RECEPTOR: 83 m2
 WALLS: 28 m2

FLOOR PLAN CREATED BY CURSIO AND MEASUREMENTS DERIVED FROM MEASUREMENTS BUT NOT GUARANTEED