



## MIDDLE FLOOR APARTMENT 2 BEDROOMS 1 BATHROOM IN BENALMADENA

📍 Benalmadena

REF# R5152111 €372,000

BEDS

2

BATHS

1

BUILT

77 m<sup>2</sup>

TERRACE

10 m<sup>2</sup>

APARTMENT CLOSE TO PALOMA PARK, BENALMADENA: Nice 2 bedrooms, 1 bathroom apartment ideally located just a short stroll from the lush green haven of Parque de la Paloma and the vibrant heart of Arroyo de La Miel with all the services, shops, supermarkets and train station. This central apartment features:

Two bedrooms with wardrobes and one bathroom – ideal for families or hosting guests. The private terrace can be closed off with glass curtains installed by the owners, along with electric blinds. Garage space is included in the price and has facility for charging electric cars.

A well-maintained gated complex with landscaped gardens and easy access to all amenities. Malaga airport at just 20 minutes driving distance.

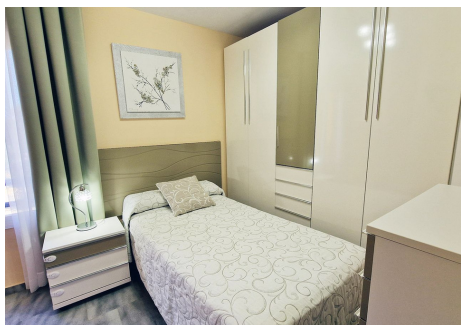
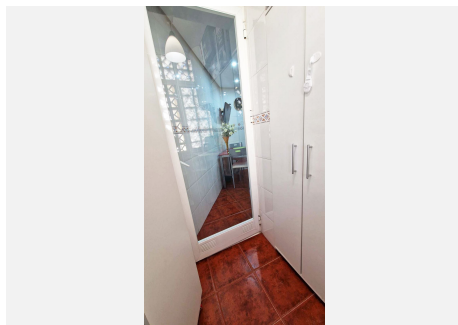
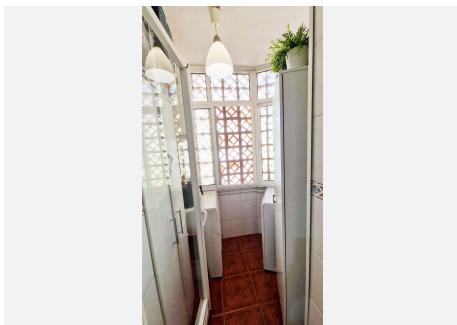
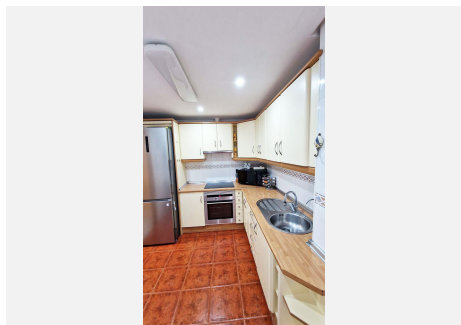
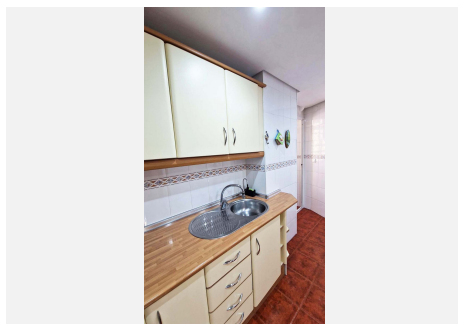
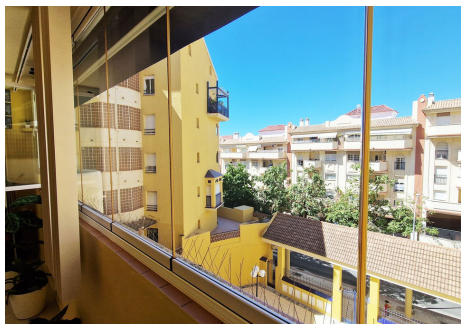
Enjoy being within walking distance of the beach (less than 10 minutes), restaurants, shops, public transport, and of course, the famous Parque de la Paloma – one of the Costa del Sol most beloved green spaces. Whether you're looking for a primary urbanisation or a holiday home, this apartment offers location, lifestyle, and value all in one.

+34 952 939 460 · [info@bromleyestatesmarbella.com](mailto:info@bromleyestatesmarbella.com) Urbanizacion El Rosario, CN340, Km 188, Marbella, Malaga 29603



# BROMLEY ESTATES

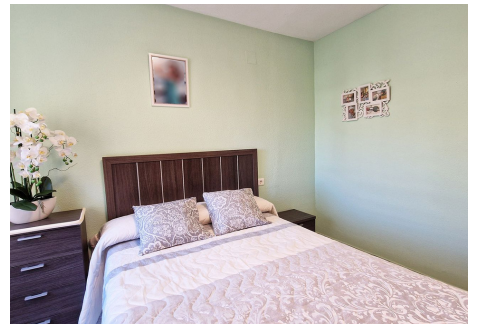
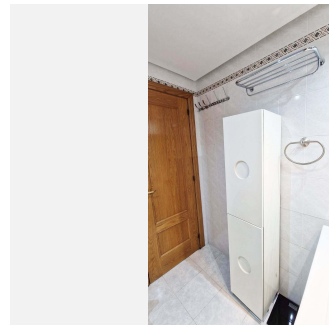
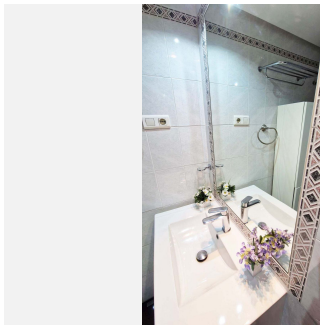
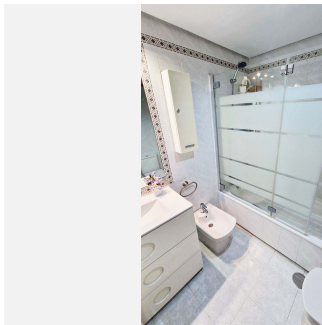
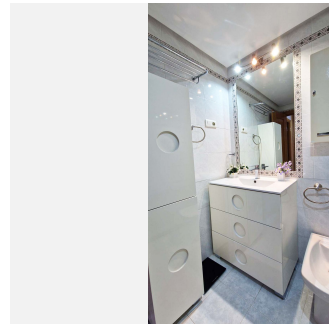
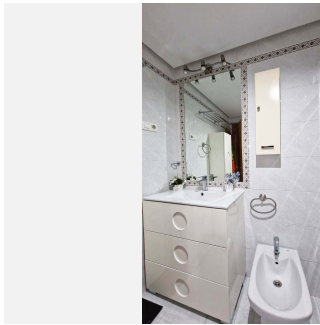
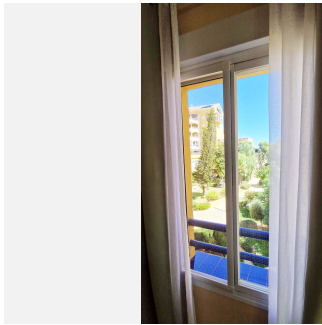
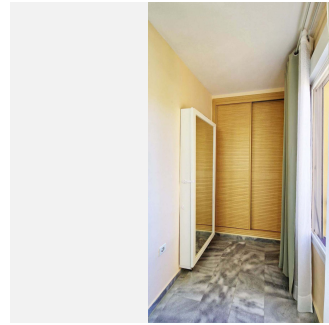
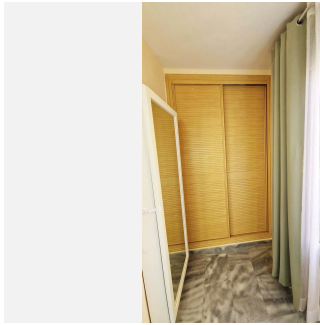
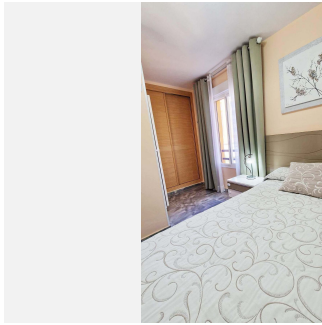
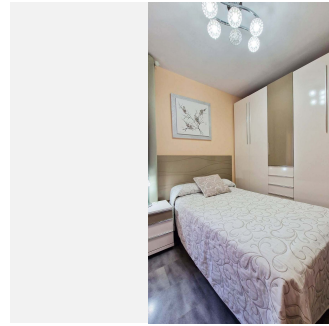
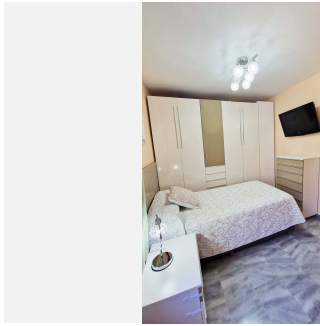
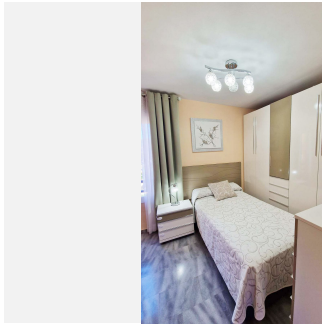
*Marbella*





# BROMLEY ESTATES

## *Marbella*





# BROMLEY ESTATES

## *Marbella*

