



HOUSE 6 BEDROOMS 5 BATHROOMS IN ESTEPONA

📍 Estepona

REF# R5155951 €2,695,000

BEDS

6

BATHS

5

BUILT

383 m²

PLOT

1005 m²

TERRACE

150 m²

Located on a private and tranquil street, front line to the Valle Romano golf course in Estepona, Villa 17 is a stunning modern masterpiece that radiates beauty and serenity. With panoramic sea, golf, and mountain views, and just minutes away from the vibrant town of Estepona, this home offers the perfect balance of luxury and convenience.

Within this prestigious location, you are only a short distance from the beach, enjoying the fantastic outdoor lifestyle and entertainment that Estepona has to offer.

This 6-bedroom, 5-bathroom villa sits on a generous plot of over 1,000 m² with a built area of 383 m², plus an additional 150 m² of terraces. Enter through impressive iron doors into a spacious and bright living room, beautifully designed with bespoke interiors and floor-to-ceiling windows that flood the home with natural light.

The villa features a generous terrace with a sunken lounge and fire pit, complemented by a private pool and an outdoor kitchen equipped with a gas BBQ, hot/cold tap, and dining area. From here, you can enjoy

BROMLEY ESTATES

Marbella

breathtaking views of the Mediterranean Sea and the golf course.

Upstairs, a sophisticated master suite opens onto its own terrace with gorgeous views. The impressive basement level is designed for entertainment, offering a TV area, wine bodega, and a cinema room.

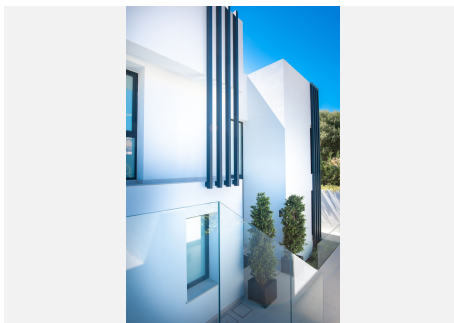
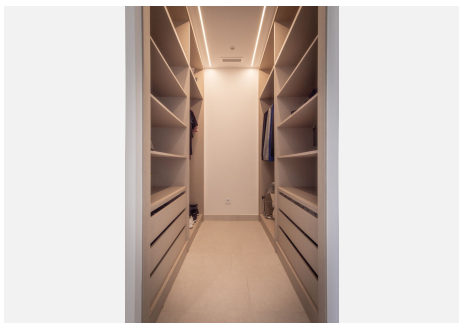
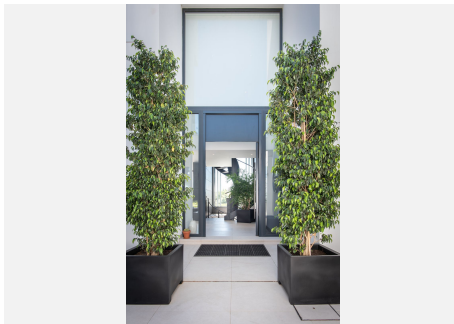
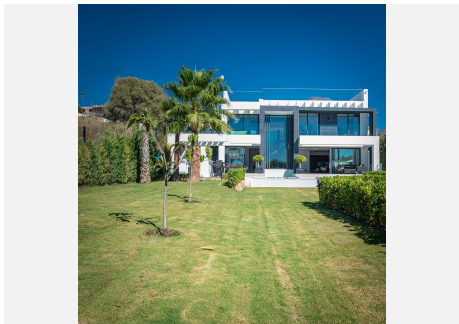
The property has been carefully designed with energy efficiency in mind. It features a state-of-the-art domotic system that controls interior and exterior lighting, air conditioning, a heat pump for the swimming pool, intercom, and alarm system. A 16-panel photovoltaic solar energy system powers the villa, with smart monitoring via an app to track consumption and store excess energy in a private power bank.

Every detail has been thoughtfully considered, giving this villa the perfect blend of style and sophistication – ready to impress even the most discerning buyer.

Plot size: 1,005 m²

Built area: 383 m²

Terraces: 150 m²



BROMLEY ESTATES

Marbella

