

## HOUSE 5 BEDROOMS 6.5 BATHROOMS IN BENAHAIVIS

📍 Benahavis

REF# R5156368 €2,300,000

BEDS

5

BATHS

6.5

BUILT

710 m<sup>2</sup>

PLOT

1711 m<sup>2</sup>

Set within the well-established and sought-after residential area of El Paraíso, Benahavís, this detached villa represents an excellent opportunity for investors or end-users looking to create a bespoke home in one of Marbella's most promising growth areas.

The property sits on a generous plot of 1,711 m<sup>2</sup> and offers a total built area of approximately 710 m<sup>2</sup> distributed across three levels. Its layout includes spacious living areas, a double-height entrance hall, multiple bedrooms with en-suite bathrooms, a basement with private garage, and extensive outdoor space for terraces and gardens. With solid construction quality and an advantageous orientation, the house provides a very strong base for a contemporary renovation project.

While the villa is in need of updating, the potential is evident. With modern design upgrades, landscaping, and refreshed interiors, the property could easily achieve an uplift of around 40% in value, making it a highly attractive renovation project for investors.

# BROMLEY ESTATES

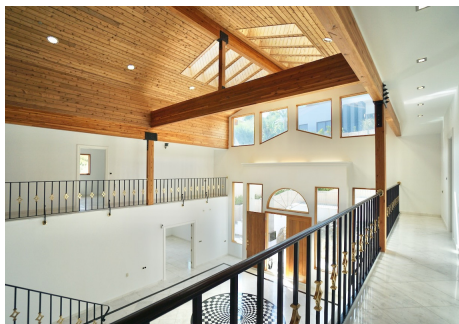
## *Marbella*

The location adds further weight to its appeal. El Paraíso is undergoing dynamic development, with new luxury projects, such as the recently announced Lamborghini Residences, set to elevate the profile and value of the area over the coming years. This momentum makes now an ideal moment to secure a property with both lifestyle and investment upside.

In summary, this villa offers:

- A prime plot and large built dimensions in a prestigious golfside community.
- A solid structural foundation and layout ideal for modernization.
- Significant value-add potential, with projected returns of approximately 40% after renovation.
- A location benefitting from ongoing luxury development, ensuring strong long-term capital appreciation.

This is an opportunity to create a tailored residence in a rising hotspot of the Costa del Sol.





# BROMLEY ESTATES

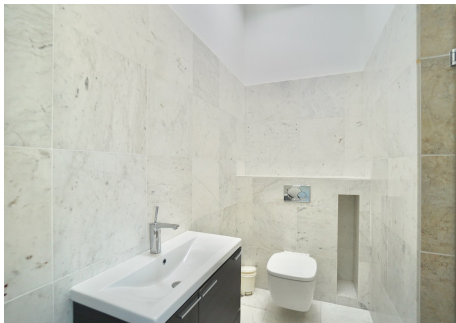
## *Marbella*





# BROMLEY ESTATES

## *Marbella*





# BROMLEY ESTATES

*Marbella*

