



GROUND FLOOR APARTMENT 2 BEDROOMS 2 BATHROOMS IN ESTEPONA

📍 Estepona

REF# R5160181 €425,000

BEDS

2

BATHS

2

BUILT

106 m²

TERRACE

50 m²

Spacious Ground-Floor Apartment in La Concha-Resina Golf, Estepona – Huge Terrace, Renovated Interiors, and Resort Amenities!

Elevate your coastal living in this elevated ground-floor apartment with an enormous terrace, nestled in the serene La Concha-Resina Golf area of Estepona. Spanning 106 m² built, this west-facing gem features a spacious living room, modern kitchen, two generous bedrooms, and two bathrooms (one en suite) – with the kitchen and bathrooms fully renovated for contemporary style and functionality. Including a garage space and storage room, it's designed for effortless comfort in a tranquil urbanization boasting lush green areas, a swimming pool, children's playground, football field, tennis courts, and padel courts. Just a quick 15-minute drive to Estepona and San Pedro, this property offers the perfect balance of peace and proximity to vibrant towns.

Key Features:

BROMLEY ESTATES

Marbella

Elevated Ground-Floor Design: Exterior bajo with height for added privacy and light, plus an expansive terrace ideal for outdoor entertaining.

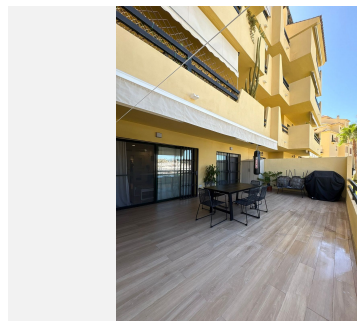
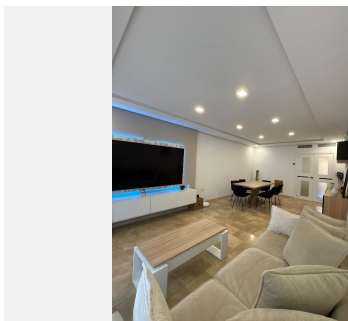
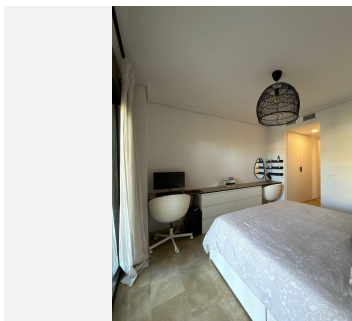
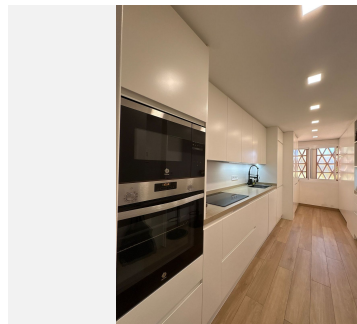
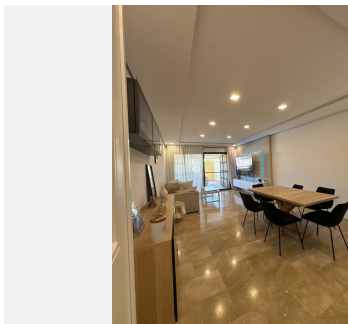
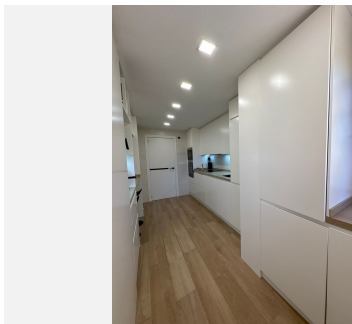
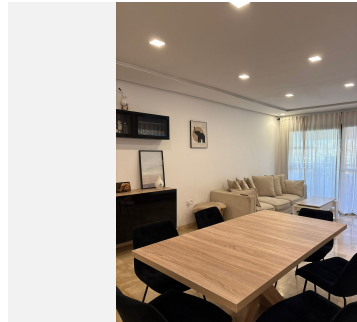
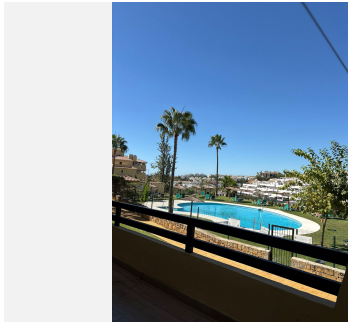
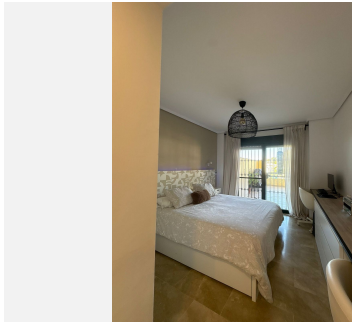
Renovated Spaces: Bright, spacious salon, fully updated kitchen, two large bedrooms with built-in wardrobes, and two modern bathrooms (one en suite).

Comfort and Convenience: Full air conditioning, elevator access, included garage parking, and dedicated trastero for storage.

Community Perks: Peaceful gated setting with abundant green spaces, communal pool, kids' park, football field, tennis and padel courts – perfect for active families.

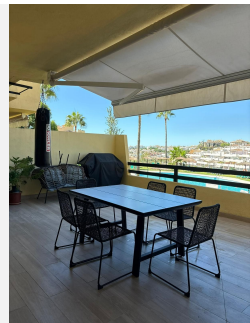
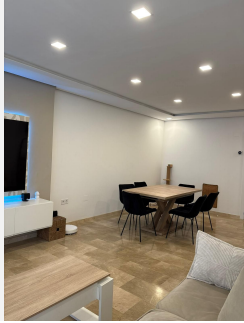
Prime Location & Orientation: West-facing for afternoon sun; surrounded by golf views and just 15 minutes by car to Estepona and San Pedro's beaches, shops, and amenities.

This ready-to-move-in apartment is an ideal retreat or investment in a high-demand golf-front area. Contact us today to schedule a viewing and make it your own!



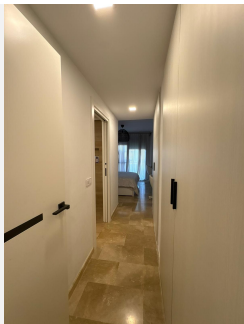
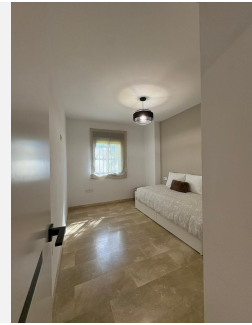
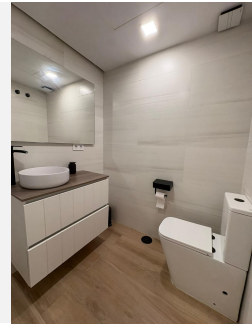
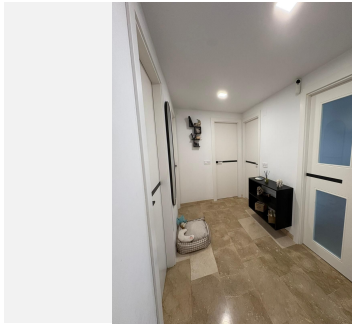
BROMLEY ESTATES

Marbella



BROMLEY ESTATES

Marbella



BROMLEY ESTATES

Marbella

